

# RNAV (GPS) PRM Y RWY 28L

(CLOSE PARALLEL)

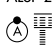
CHICAGO O'HARE INTL (ORD)

WAAS CH <b>93839</b> <b>W28E</b>	APP CRS <b>275°</b>	Rwy Idg TDZE Apt Elev	<b>7500</b> <b>667</b> <b>680</b>
--	------------------------	-----------------------------	---

RNP APCH. RADAR required.

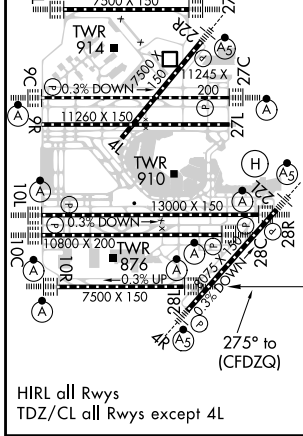
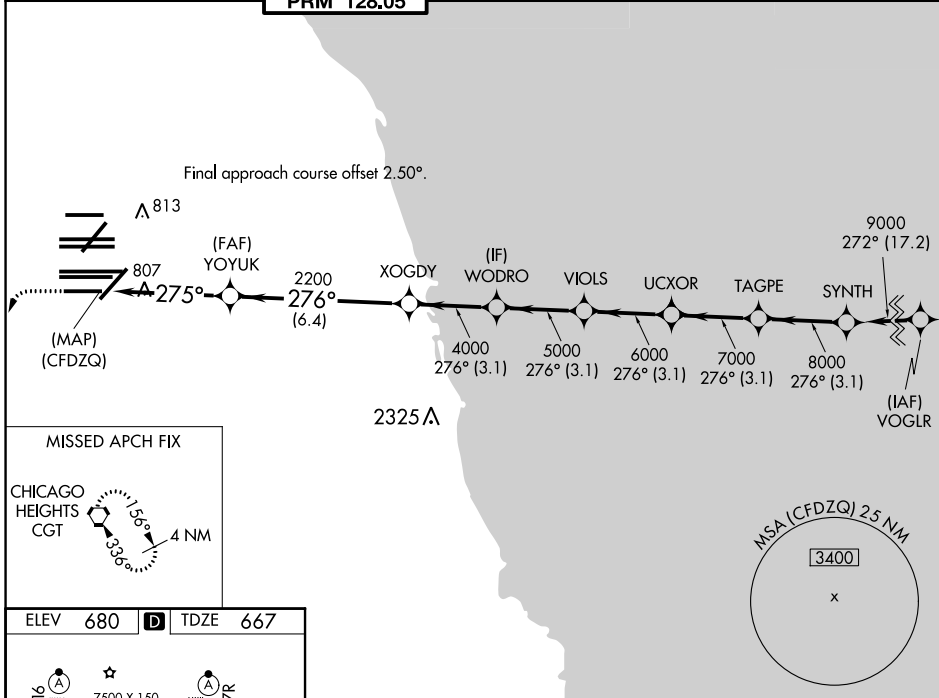
▼ For uncompensated Baro-VNAV systems, LNAV/VNAV NA below -19°C or above 54°C. Simultaneous approach authorized. Use of FD or AP required during simultaneous operations. Dual VHF comm required. See additional requirements on AAUP.

ALSF-2



MISSED APPROACH: Climb to 1200 then climbing left turn to 4000 direct CGT VORTAC and hold.

D-ATIS <b>135.4</b> <b>282.225</b>	CHICAGO APP CON <b>119.0 292.125</b>	O'HARE TOWER <b>133.0 348.0</b> <b>PRM 128.05</b>	GND CON (TWR NORTH) <b>124.125</b> (TWR SOUTH) <b>118.05</b> (ALL TWRS) <b>226.675</b>	(TWR CENTER) (OBND) <b>121.75</b> (IBND) <b>121.9</b>	CLNC DEL <b>121.6</b>	CPDLC
--	---	---	--	---	--------------------------	-------



ELEV 680	TDZE 667						
1200	4000	CGT					
(CFDZQ)	YOYUK	XOGDY	WODRO	VIOLS	UCXOR	TAGPE	SYNTH
	2200	4000	5000	6000	7000	8000	9000
	275°					276°	
	4.7 NM	6.4 NM	3.1 NM	3.1 NM	3.1 NM	3.1 NM	3.1 NM
GP 3.00°	TCH 55						
CATEGORY	A	B	C	D			
LPV DA	917/24		250 (300-½)				
LNAV/VNAV DA	1090/40		423 (500-¾)				

# RNAV (GPS) PRM Y RWY 28L (CLOSE PARALLEL)

EC-3, 16 JUN 2022 to 14 JUL 2022

EC-3, 16 JUN 2022 to 14 JUL 2022