

WAAS CH 58143 W09D	APP CRS 093°	Rwy ldg TDZE Apt Elev	11245 673 680
--	------------------------	-----------------------------	--


RNAV (GPS) RWY 9C

CHICAGO O'HARE INTL (O.R.D)

RNP APCH.

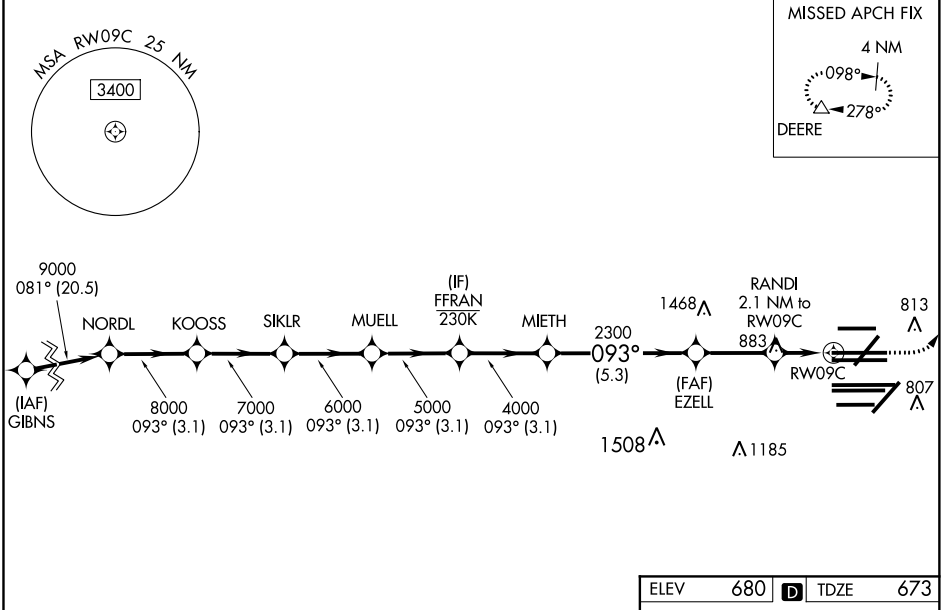
▼ Simultaneous approach authorized. LNAV procedure NA during simultaneous operations. Use of FD or AP required during simultaneous operations. For uncompensated Baro-VNAV systems, LNAV/VNAV NA below -19°C or above 54°C. For inop ALS, increase LNAV/VNAV all cats visibility to RVR 4500 and LNAV Cat C/D to 1% SM.

ALSF-2



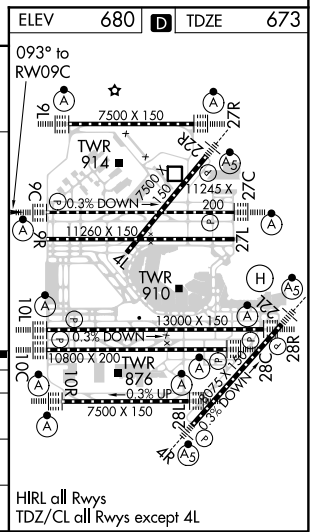
MISSED APPROACH: Climb to 1200 then climbing left turn to 4000 direct DEERE and hold.

D-ATIS 135.4 282.225	CHICAGO APP CON 119.0 292.125	O'HARE TOWER 121.15 348.0	GND CON (TWR NORTH) 124.125 (TWR SOUTH) 118.05 (ALL TWRs) 226.675	(TWR CENTER) 121.75 (OBND) 121.9 (IBND)	CLNC DEL 121.6	CPDLC
--	---	-------------------------------------	---	---	--------------------------	-------



VGSI and RNAV glidepath not coincident (VGSI Angle 3.00/TCH 72).

	NORDL	KOOSS	SIKLR	MUELL	FFRAN	MIETH	EZZELL	RANDI	DEERE
GP 3.00° TCH 55	9000	8000	7000	6000	5000	4000	2300	1400	1200
	-3.1 NM	3.1 NM	3.1 NM	3.1 NM	3.1 NM	5.3 NM	2.8 NM	0.9 - 1.2 NM	
CATEGORY	A	B	C	D					
LPV DA		873/18	200 (200-½)						
LNAV/VNAV DA		976/24	303 (300-½)						
LNAV MDA	1140/24	467 (500-½)	1140/50	467 (500-1)					



EC-3, 16 JUN 2022 to 14 JUL 2022

EC-3, 16 JUN 2022 to 14 JUL 2022