

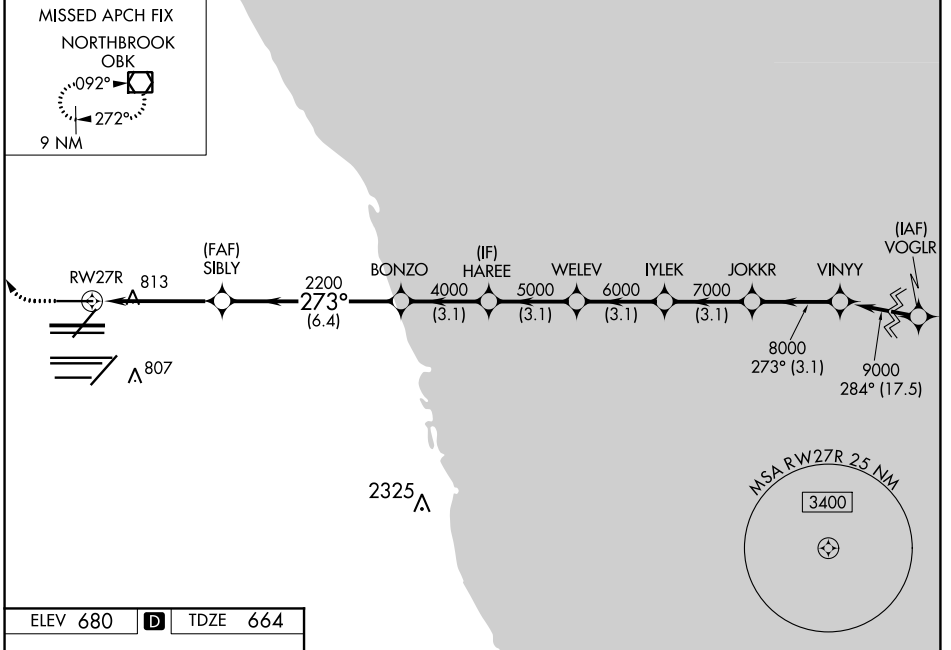
WAAS CH 69508 W27B	APP CRS 273°	Rwy Idg TDZE 664 Apt Elev 680	7500
--	------------------------	---	-------------

RNAV (GPS) RWY 27R

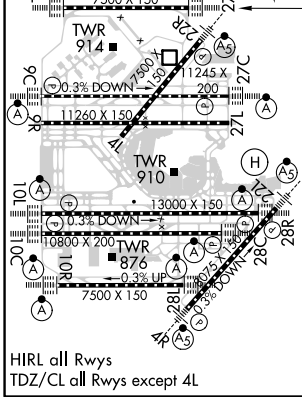
CHICAGO O'HARE INTL (ORD)

RNP APCH.		ALSIF-2 	MISSED APPROACH: Climb to 1100 then climbing right turn to 4000 direct OBK VOR/DME and hold, continue climb-in-hold to 4000.
RADAR required for procedure entry.			
<p>Simultaneous approach authorized. LNAV procedure NA during simultaneous operations. Use of FD or AP providing RNAV track guidance required during simultaneous operations. For uncompensated Baro-VNAV systems, procedure NA below -1°C or above 54°C.</p>			

D-ATIS 135.4 282.225	CHICAGO APP CON 119.0 292.125	O'HARE TOWER 128.15 348.0	GND CON (TWR NORTH) 124.125 (TWR SOUTH) 118.05 226.675 (ALL TWRs)	(TWR CENTER) (TWR NORTH) 121.75 (OBND) (TWR SOUTH) 121.9 (IBND)	CLNC DEL 121.6	CPDLC
--	---	-------------------------------------	---	---	--------------------------	-------



ELEV 680	D	TDZE 664
----------	----------	----------



1100	4000	OBK						
* LNAV only.								
* 1.3 NM to RWY27R								
GP 3.00°	TCH 55							
1.3	3.4	6.4 NM	3.1 NM	3.1 NM	3.1 NM	3.1 NM	3.1 NM	
CATEGORY	A	B	C	D				
LPV DA	864/18		200 (200-½)					
LNAV/VNAV DA	961/24		297 (300-½)					
LNAV MDA	1120/24		456 (500-½)		1120/45			456 (500-¾)

EC-3, 16 JUN 2022 to 14 JUL 2022

EC-3, 16 JUN 2022 to 14 JUL 2022