

LOC/DME I-ZJ 110.75 Chan 44 (Y)	APP CRS 094°	Rwy Idg 7500 TDZE 680 Apt Elev 680
--	------------------------	---

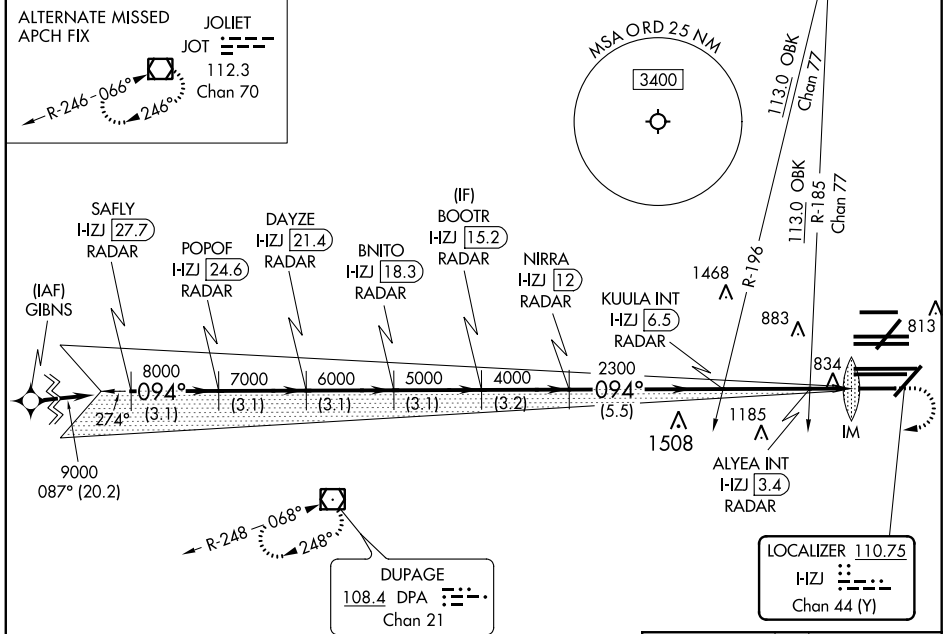
ILS Z or LOC Z RWY 10R

CHICAGO O'HARE INTL (ORD)

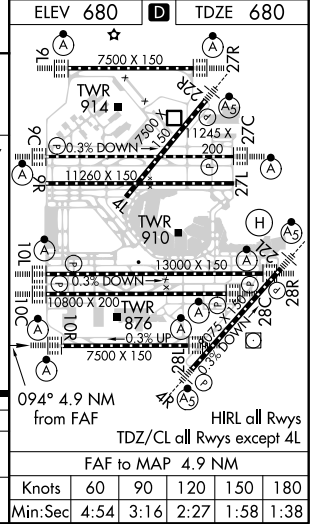
RNAV 1-GPS or RADAR required for procedure entry. DME or RADAR required.
 From GIBNS: RNAV-1 GPS required.
 ⚠ Simultaneous approach authorized.
 For inop ALS, increase S-LOC 10R Cat C and D visibility to RVR 6000.

ALSF-2
 MISSED APPROACH: Climb to 1200 then climbing right turn to 4000 direct DPA VOR/DME and hold.

D-ATIS 135.4 282.225	CHICAGO APP CON 119.0 292.125	O'HARE TOWER 133.0 348.0	GND CON (TWR CENTER) 124.125 (TWR NORTH) 118.05 (TWR SOUTH) 226.675 (ALL TWRs)	(TWR CENTER) 121.75 (OBND) 121.9 (IBND)	CLNC DEL 121.6	CPDLC
--	---	------------------------------------	--	---	--------------------------	-------



	SAFLY I-ZJ [27.7] RADAR	POPOF I-ZJ [24.6] RADAR	DAYZE I-ZJ [21.4] RADAR	BNITO I-ZJ [18.3] RADAR	NIIRRA I-ZJ [12] RADAR	KUULA INT I-ZJ [6.5] RADAR	ALYEA INT I-ZJ [3.4] RADAR	1200	4000	DPA
	3.1 NM	3.1 NM	3.1 NM	3.1 NM	3.2 NM	5.5 NM	3.1 NM			
CATEGORY	A			B		C		D		
S-ILS 10R	880/18			200 (200-½)						
S-LOC 10R	1100/24			420 (500-½)						



EC-3, 16 JUN 2022 to 14 JUL 2022

EC-3, 16 JUN 2022 to 14 JUL 2022