

LOC/DME I-HZJ 110.75 Chan 44 (Y)	APP CRS 094°	Rwy Idg TDZE 680 Apt Elev 680	7500
---	------------------------	---	-------------

ILS Z RWY 10R (SA CAT I)

CHICAGO O'HARE INTL (ORD)

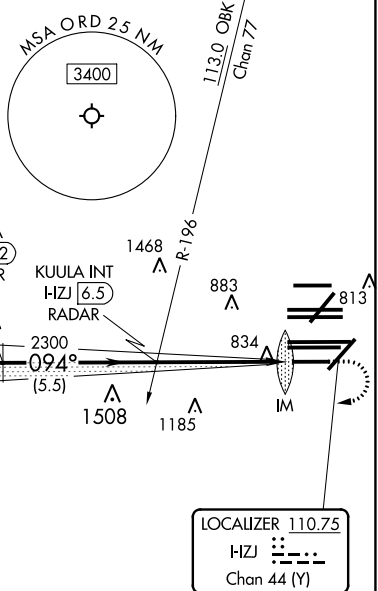
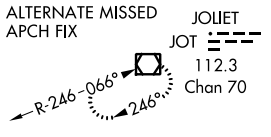
RNAV 1-GPS or RADAR required for procedure entry. DME or RADAR required.
From GIBNS: RNAV-1 GPS required.

Simultaneous approach authorized. Requires specific OPSPEC, MSPEC, or LOA approval and use of HUD to DH.



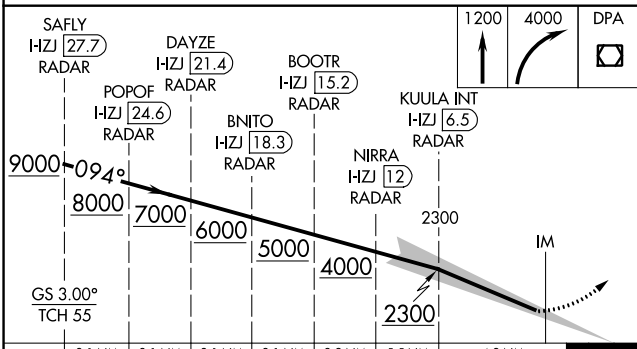
MISSED APPROACH: Climb to 1200 then climbing right turn to 4000 direct DPA VOR/DME and hold.

D-ATIS 135.4 282.225	CHICAGO APP CON 119.0 292.125	O'HARE TOWER 133.0 348.0	124.125 (TWR NORTH) 118.05 (TWR SOUTH) 226.675 (ALL TWRs)	GND CON (TWR CENTER) 121.75 (OBND) 121.9 (IBND)	CLNC DEL 121.6	CPDLC
--	---	------------------------------------	--	---	--------------------------	-------

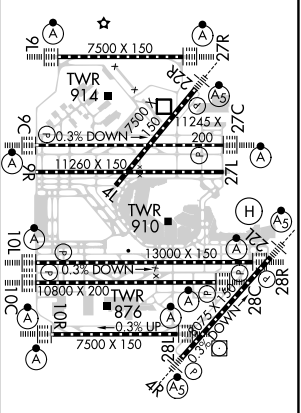


EC-3, 16 JUN 2022 to 14 JUL 2022

EC-3, 16 JUN 2022 to 14 JUL 2022



ELEV 680 TDZE 680



CATEGORY	A	B	C	D
S-ILS 10R	RA 165/14		150 DA 830	

SA CATEGORY I ILS-SPECIAL AIRCREW & AIRCRAFT CERTIFICATION REQUIRED

HIRL all Rwys
TDZ/CL all Rwys except 4L