


# ILS PRM RWY 28C (SA CAT I)

(CLOSE PARALLEL)

CHICAGO O'HARE INTL (ORD)

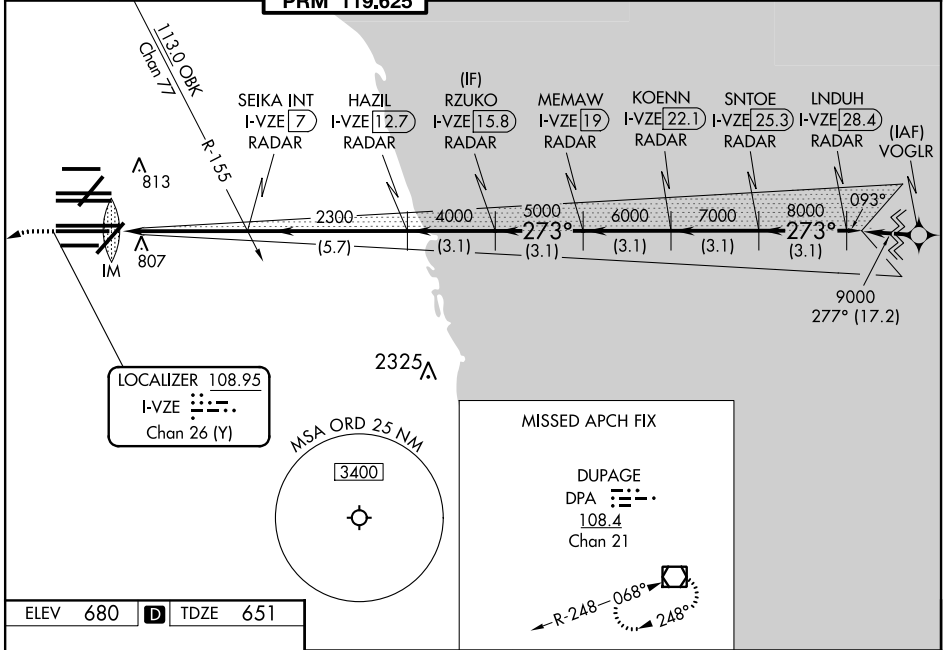
LOC/DME I-VZE <b>108.95</b> Chan <b>26 (Y)</b>	APP CRS <b>273°</b>	Rwy ldg <b>10800</b> TDZE <b>651</b> Apt Elev <b>680</b>
--	------------------------	--

Aircraft not GPS equipped - RADAR required for procedure entry.  
DME or RADAR required.  
From VOGLR: RNAV 1-GPS required.

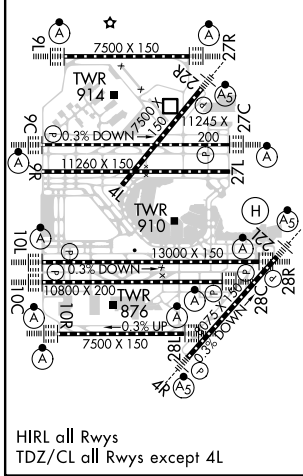
ALSF-2  
  
**MISSED APPROACH:**  
 Climb to 1100 then climbing left turn to 4000 on heading 215° and DPA VOR/DME R-082 to DPA VOR/DME and hold.

Simultaneous approach authorized. Use of FD or AP required during simultaneous operations. Dual VHF comm required. See additional requirements on AAUP. Requires specific OPSPEC, MSPEC, or LOA approval and use of HUD to DH.

D-ATIS <b>135.4</b> <b>282.225</b>	CHICAGO APP CON <b>119.0 292.125</b>	O'HARE TOWER <b>120.75 348.0</b> <b>PRM 119.625</b>	GND CON (TWR CENTER) <b>121.75</b> (TWR NORTH) <b>118.05</b> (TWR SOUTH) <b>226.675</b> (ALL TWRS)	(TWR CENTER) <b>121.75</b> (OBND) <b>121.9</b> (IBND)	CLNC DEL <b>121.6</b>	CPDLC
--	---	---	---	--	--------------------------	-------



ELEV <b>680</b>	<b>D</b>	TDZE <b>651</b>
-----------------	----------	-----------------



1100 4000 hdg 215° DPA R-082

VGSI and ILS glidepath not coincident (VGSI Angle 3.00/TCH 80).

SEIKA INT I-VZE 7 RADAR	HAZIL I-VZE 12.7 RADAR	RZUKO I-VZE 15.8 RADAR	MEMAW I-VZE 19 RADAR	KOENN I-VZE 22.1 RADAR	SNTOE I-VZE 25.3 RADAR	LNDUH I-VZE 28.4 RADAR
-------------------------	------------------------	------------------------	----------------------	------------------------	------------------------	------------------------

2300 4000 5000 6000 7000 8000 9000

GS 3.00° TCH 55

1044'	5 NM	5.7 NM	3.1 NM	3.1 NM	3.1 NM	3.1 NM	3.1 NM
CATEGORY	A	B	C	D			
S-ILS 28C	RA 155/14 150 DA 801						

**SA CATEGORY I ILS - SPECIAL AIRCREW & AIRCRAFT CERTIFICATION REQUIRED**

# ILS PRM RWY 28C (SA CAT I) (CLOSE PARALLEL)

EC-3, 16 JUN 2022 to 14 JUL 2022

EC-3, 16 JUN 2022 to 14 JUL 2022