

LOC/DME I-OYG 111.9 Chan 56	APP CRS 093°	Rwy Idg 11245 TDZE 673 Apt Elev 680
--	------------------------	--

ILS or LOC RWY 9C

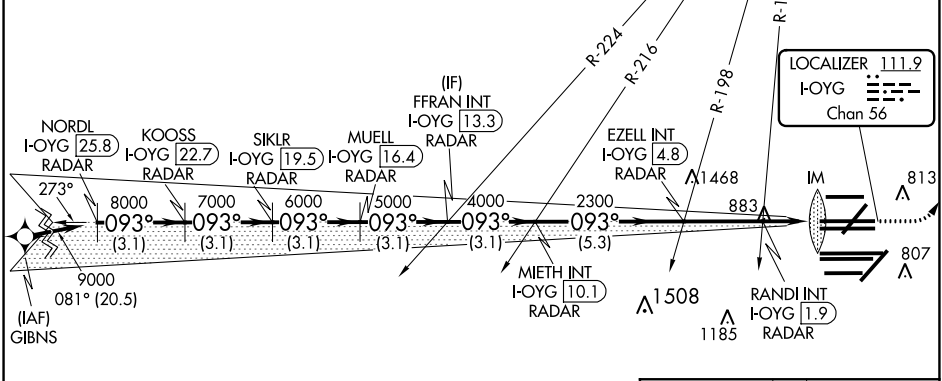
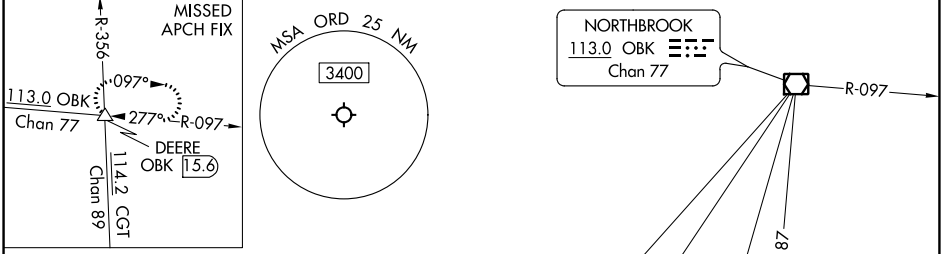
CHICAGO O'HARE INTL (ORD)

DME or RADAR required. From GIBNS: RNAV 1-GPS required. Aircraft not GPS equipped - RADAR required for procedure entry.

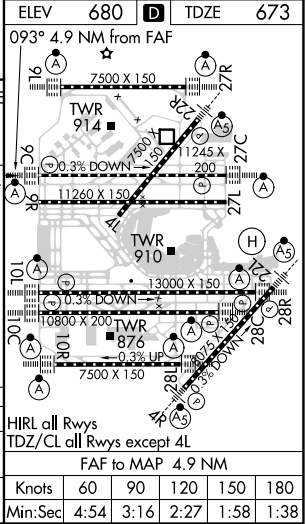
ALSF-2 MISSED APPROACH: Climb to 1200 then climbing left turn to 4000 on heading 037° and OBK VOR/DME R-097 to DEERE INT/OBK 15.6 DME and hold.

Simultaneous approach authorized. For inop ALS, increase S-LOC 9C Cat C/D visibility to 1½ SM.

D-ATIS 135.4 282.225	CHICAGO APP CON 119.0 292.125	O'HARE TOWER 121.15 348.0	GND CON (TWR NORTH) 124.125 (TWR SOUTH) 118.05 226.675 (ALL TWRs)	(TWR CENTER) 121.75 (OBND) 121.9 (IBND)	CLNC DEL 121.6	CPDLC
--	--	--	--	--	--------------------------	-------



NORDL I-OYG 25.8 RADAR	KOOSS I-OYG 22.7 RADAR	SIKLR I-OYG 19.5 RADAR	MUELL I-OYG 16.4 RADAR	FFRAN INT I-OYG 13.3 RADAR	EZELL INT I-OYG 4.8 RADAR	RANDI INT I-OYG 1.9 RADAR	DEERE I-OYG 1.2	OBK R-097
9000	8000	7000	6000	5000	4000	2300	1400	1200
3.1 NM	3.1 NM	3.1 NM	3.1 NM	3.1 NM	5.3 NM	2.9 NM	0.8 NM	1.1 NM
GS 3.00° TCH 55		VGS I and ILS glidepath not coincident (VGS I Angle 3.00/TCH 72).		4000 hdg 037°		*LOC only		
CATEGORY	A	B		C		D		
S-ILS 9C	873/18 200 (200-½)							
S-LOC 9C	1140/24	467 (500-½)		1140/50		467 (500-1)		



EC-3, 16 JUN 2022 to 14 JUL 2022

EC-3, 16 JUN 2022 to 14 JUL 2022