

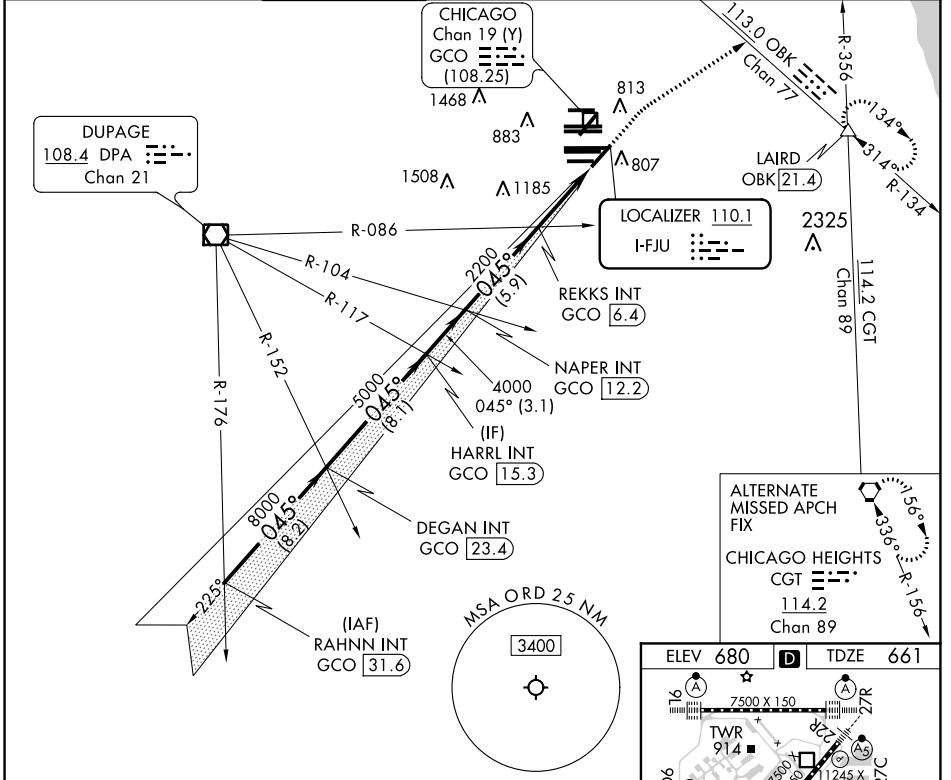
LOC I-FJU 110.1	APP CRS 045°	Rwy ldg TDZE Apt Elev	8075 661 680
---------------------------	------------------------	-----------------------------	---

ILS or LOC RWY 4R

CHICAGO O'HARE INTL (ORD)

RADAR required for procedure entry.		MALSR	MISSED APPROACH: Climb to 1200 then climbing right turn to 4000 on heading 060° and OBK VOR/DME R-134 to LAIRD INT/OBK 21.4 DME and hold.	
Simultaneous approach authorized.				

D-ATIS 135.4 282.225	CHICAGO APP CON 119.0 292.125	O'HARE TOWER 120.75 348.0	124.125 (TWR NORTH) 118.05 (TWR SOUTH) 226.675 (ALL TWRs)	GND CON (TWR CENTER) 121.75 (OBND) 121.9 (IBND)	CLNC DEL 121.6	CPDLC
--	---	-------------------------------------	--	---	--------------------------	-------



RAHNN INT GCO [31.6]	VGSI and ILS glidepath not coincident (VGSI Angle 3.00/TCH 67).		1200	4000	OBK R-134	LAIRD
DEGAN INT GCO [23.4]	HARRL INT GCO [15.3]	NAPER INT GCO [12.2]	REKKS INT GCO [6.4]	2128		
GS 3.00° TCH 52		hdg 060°				
8.2 NM		8.1 NM		3.1 NM		5.9 NM
CATEGORY		A		B		C
S-ILS 4R		861/18		200 (200-½)		
S-LOC 4R		1160/24 499 (500-½)		1160/50 499 (500-1)		
CIRCLING		1220-1 540 (600-1)		1220-1½ 540 (600-1½)		1460-2½ 780 (800-2½)

ALTERNATE MISSED APCH FIX

CHICAGO HEIGHTS CGT [114.2] Chan 89

ELEV 680	D	TDZE 661
HRL all Rwys		
TDZ/CL all Rwys except 4L		
FAF to MAP 4.4 NM		
Knots	60	90 120 150 180
Min:Sec	4:24	2:56 2:12 1:46 1:28

EC-3, 16 JUN 2022 to 14 JUL 2022

EC-3, 16 JUN 2022 to 14 JUL 2022