

LOC/DME I-VQX 110.75 Chan 44(Y)	APP CRS 274°	Rwy ldg TDZE Apt Elev	7500 667 680
--	------------------------	-----------------------------	---

ILS or LOC RWY 28L

CHICAGO O'HARE INTL (ORD)

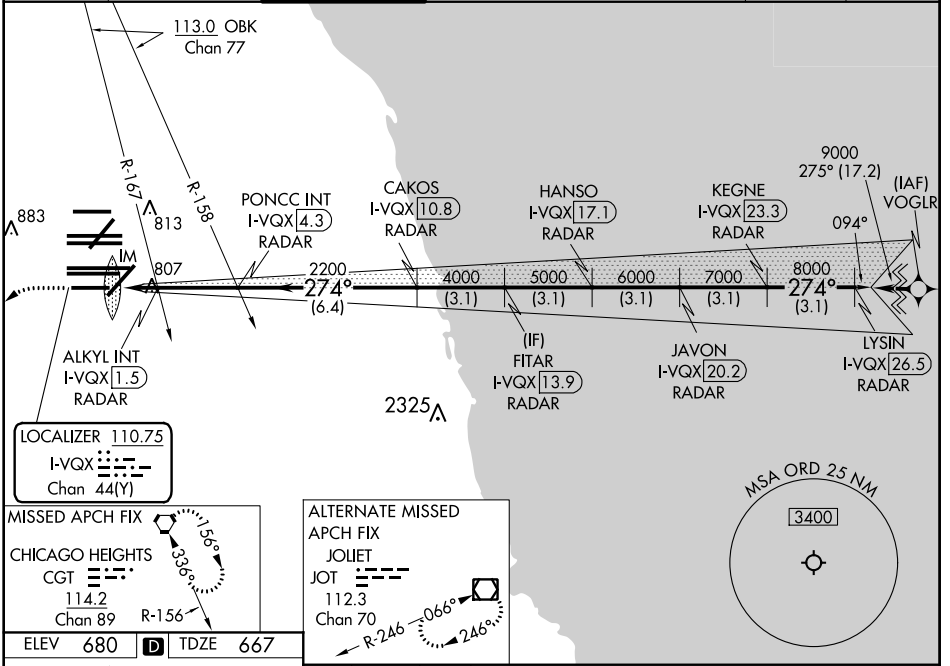
Aircraft not GPS equipped - RADAR required for procedure entry. DME or RADAR required.
From VOGLR: RNAV 1-GPS required.

Simultaneous approach authorized.

ALSF-2

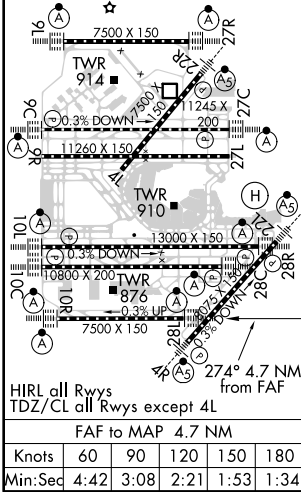
MISSED APPROACH: Climb to 1200 then climbing left turn to 4000 direct CGT VORTAC and hold.

D-ATIS 135.4 282.225	CHICAGO APP CON 119.0 292.125	O'HARE TOWER 133.0 348.0	GND CON (TWR NORTH) 124.125 (TWR SOUTH) 118.05 (ALL TWRS) 226.675	(TWR CENTER) 121.75 (OBND) 121.9 (IBND)	CLNC DEL 121.6	CPDLC
--	---	------------------------------------	---	---	--------------------------	-------



EC-3, 16 JUN 2022 to 14 JUL 2022

EC-3, 16 JUN 2022 to 14 JUL 2022



1200	4000	CGT	*LOC only.						
I-VQX DME ANTENNA		ALJKY INT I-VQX [1.5] RADAR	PONCC INT I-VQX [4.3] RADAR	CAKOS I-VQX [10.8] RADAR	FITAR I-VQX [13.9] RADAR	HANSO I-VQX [17.1] RADAR	JAVON I-VQX [20.2] RADAR	KEGNE I-VQX [23.3] RADAR	LYSIN I-VQX [26.5] RADAR
I-VQX [0.3]	*I-VQX [0.8]	*I-VQX [0.8]	*I-VQX [0.8]	*I-VQX [0.8]	*I-VQX [0.8]	*I-VQX [0.8]	*I-VQX [0.8]	*I-VQX [0.8]	*I-VQX [0.8]
2200	4000	5000	6000	7000	8000	9000	GS 3.00° TCH 55		
0.2	0.9	0.7	2.9 NM	6.4 NM	3.1 NM	3.1 NM	3.1 NM	3.1 NM	3.1 NM
CATEGORY	A		B		C		D		
S-ILS 28L	867/18 200 (200-½)								
S-LOC 28L	1240/24 573 (600-½)			1240-1¼ 573 (600-1¼)					
ALJKY FIX MINIMUMS (DUAL VOR RECEIVERS OR DME REQUIRED)									
S-LOC 28L	1060/24 393 (400-½)			1060/35 393 (400-⅝)					