

LOC/DME I-UYJ <b>111.9</b> Chan 56	APP CRS <b>273°</b>	Rwy ldg <b>11245</b> TDZE <b>653</b> Apt Elev <b>680</b>
--	------------------------	--

# ILS or LOC RWY 27C

CHICAGO O'HARE INTL (ORD)

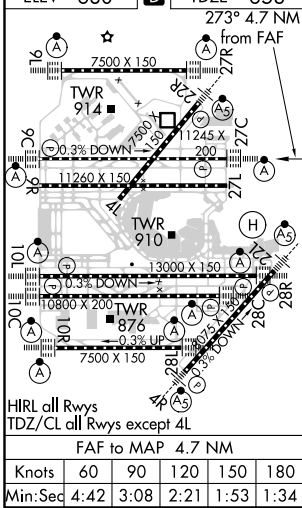
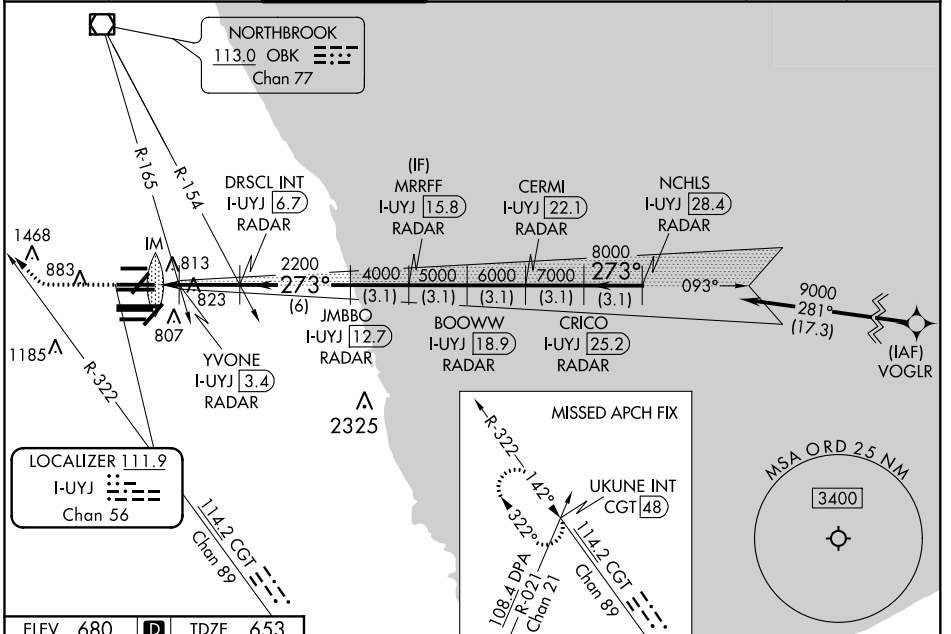
From VOGLR: RNAV 1-GPS required. Aircraft not GPS equipped - RADAR required for procedure entry. DME or RADAR required.

ALSF-2

MISSED APPROACH: Climb to 1100 then climbing right turn to 4000 on heading 290° and CGT R-322 to UKUNE INT/ CGT 48 DME and hold.

Simultaneous approach authorized. For inop ALS, increase S-LOC 27C Cat C/D visibility to 1½ SM.

D-ATIS <b>135.4</b> <b>282.225</b>	CHICAGO APP CON <b>119.0 292.125</b>	O'HARE TOWER <b>121.15 348.0</b>	GND CON (TWR NORTH) <b>124.125</b> (TWR SOUTH) <b>118.05</b> (ALL TWRS) <b>226.675</b>	(TWR CENTER) (OBND) <b>121.75</b> (IBND) <b>121.9</b>	CLNC DEL <b>121.6</b>	CPDLC
--	---	-------------------------------------	---	--	--------------------------	-------



ELEV 680	TDZE 653	273° 4.7 NM from FAF	1100	4000	CGT R-322	UKUNE INT	VGSI and ILS glidepath not coincident (VGSI Angle 3.00/TCH 75).	NCHLS I-UYJ 28.4							
<p>*LOC only.</p> <p>DRSCL INT I-UYJ 6.7</p> <p>MRRFF I-UYJ 15.8</p> <p>CERMI I-UYJ 22.1</p> <p>BOOWW I-UYJ 18.9</p> <p>CRICO I-UYJ 25.2</p> <p>JMBBO I-UYJ 12.7</p> <p>YVONE I-UYJ 3.4</p>								9000							
<p>1160* 2200</p> <p>4000 5000 6000 7000</p> <p>273°</p> <p>8000</p> <p>GS 3.00° TCH 56</p>															
CATEGORY				A		B		C		D					
S-ILS 27C				853/18				200 (200-½)							
S-LOC 27C				1160/24				507 (500-½)				1160/55 507 (500-1)			
YVONE FIX MINIMUMS (DUAL VOR RECEIVERS or DME REQUIRED)															
S-LOC 27C				1080/24				427 (400-½)				1080/40 427 (400-¾)			

EC-3, 16 JUN 2022 to 14 JUL 2022

EC-3, 16 JUN 2022 to 14 JUL 2022