

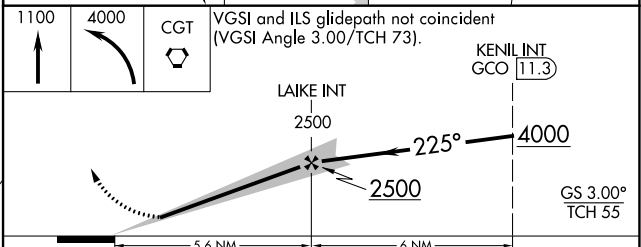
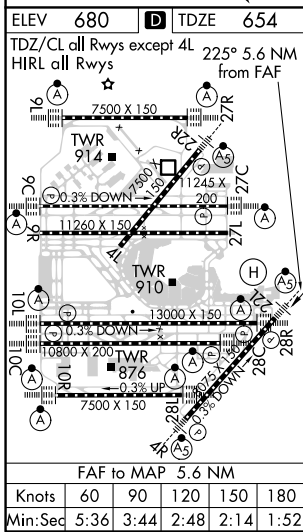
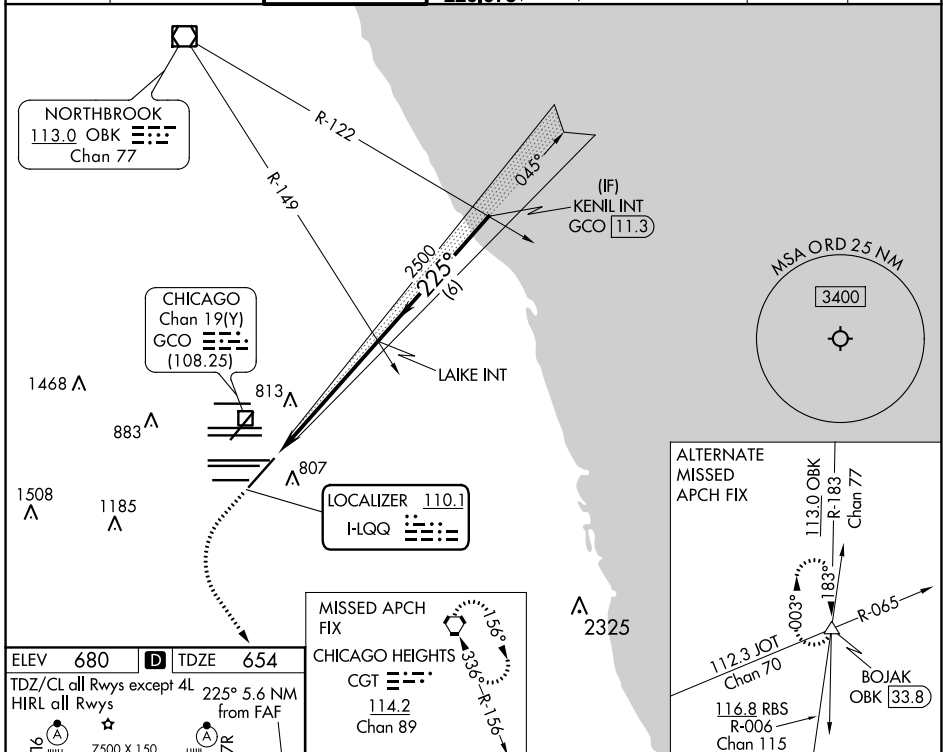
LOC I-LQQ	APP CRS	Rwy ldg TDZE	8075 654
<b>110.1</b>	<b>225°</b>	Apt Elev	<b>680</b>

# ILS or LOC RWY 22L

CHICAGO O'HARE INTL (ORD)

RADAR required for procedure entry.		MAISLR	MISSED APPROACH: Climb to 1100 then climbing left turn to 4000 direct CGT VORTAC and hold.
Simultaneous approach authorized.			

D-ATIS	CHICAGO APP CON	O'HARE TOWER	GND CON (TWR NORTH)	(TWR CENTER)	CLNC DEL	CPDLC
<b>135.4</b>	<b>119.0 292.125</b>	<b>120.75 348.0</b>	<b>124.125</b>	<b>121.75</b>	<b>121.6</b>	
<b>282.225</b>			<b>118.05</b>	<b>121.9</b>		
			<b>226.675</b>	(IBND)		
			(ALL TWRs)			



CATEGORY	A	B	C	D
S-ILS 22L	854/18 200 (200-1/2)			
S-LOC 22L	1120/24	466 (500-1/2)	1120/50	466 (500-1)
<input checked="" type="checkbox"/> CIRCLING	1220-1	540 (600-1)	1220-1 1/2	1460-2 1/2
			540 (600-1 1/2)	780 (800-2 1/2)

EC-3, 16 JUN 2022 to 14 JUL 2022

EC-3, 16 JUN 2022 to 14 JUL 2022