

LOC/DME I-MED 111.1 Chan 48	APP CRS 093°	Rwy Idg 12246 TDZE 672 Apt Elev 680
---	------------------------	--

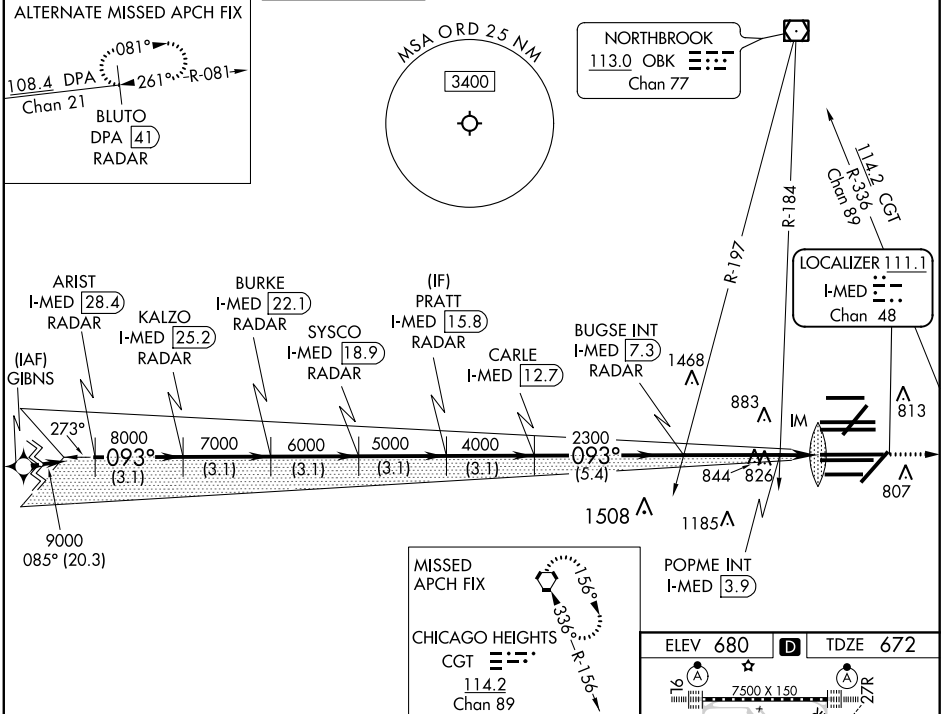
ILS or LOC RWY 10L

CHICAGO O'HARE INTL (ORD)

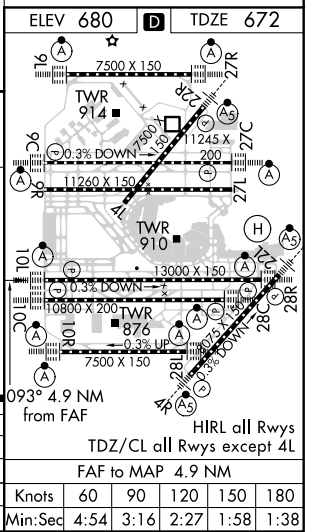
From GIBNS: RNAV-1 GPS required.
 RNAV 1-GPS or RADAR required for procedure entry. DME or RADAR required.
 Simultaneous approach authorized.

ALSF-2
 MISSED APPROACH: Climb to 4000 on heading 093° and CGT VORTAC R-336 to CGT VORTAC and hold.

D-ATIS 135.4 282.225	CHICAGO APP CON 119.0 292.125	O'HARE TOWER 132.7 348.0	GND CON (TWR CENTER) 124.125 (TWR NORTH) 118.05 (TWR SOUTH) 226.675 (ALL TWRS)	(TWR CENTER) 121.75 (OBND) 121.9 (IBND)	CLNC DEL 121.6	CPDLC
--	---	------------------------------------	--	---	--------------------------	-------



MISSED APCH FIX 156° 336° R-156		CHICAGO HEIGHTS CGT 114.2 Chan 89	
VGSI and ILS glidepath not coincident (VGSI Angle 3.00/TCH 74).			
ARIST I-MED 28.4 RADAR	BURKE I-MED 22.1 RADAR	PRATT I-MED 15.8 RADAR	BUGSE INT I-MED 7.3
KALZO I-MED 25.2 RADAR	SYSCO I-MED 18.9 RADAR	CARLE I-MED 12.7 RADAR	POPME INT I-MED 3.9
GS 3.00° TCH 56		*LOC only.	
3.1 NM	3.1 NM	3.1 NM	0.1 NM
CATEGORY A		CATEGORY B	
S-ILS 10L		872/18 200 (200-½)	
S-LOC 10L		1200/24 528 (600-½) 1200/55 528 (600-1)	
POPME FIX MINIMUMS (DUAL VOR RECEIVERS OR DME REQUIRED)			
S-LOC 10L		1080/24 408 (400-½) 1080/40 408 (400-¾)	



EC-3, 16 JUN 2022 to 14 JUL 2022

EC-3, 16 JUN 2022 to 14 JUL 2022