

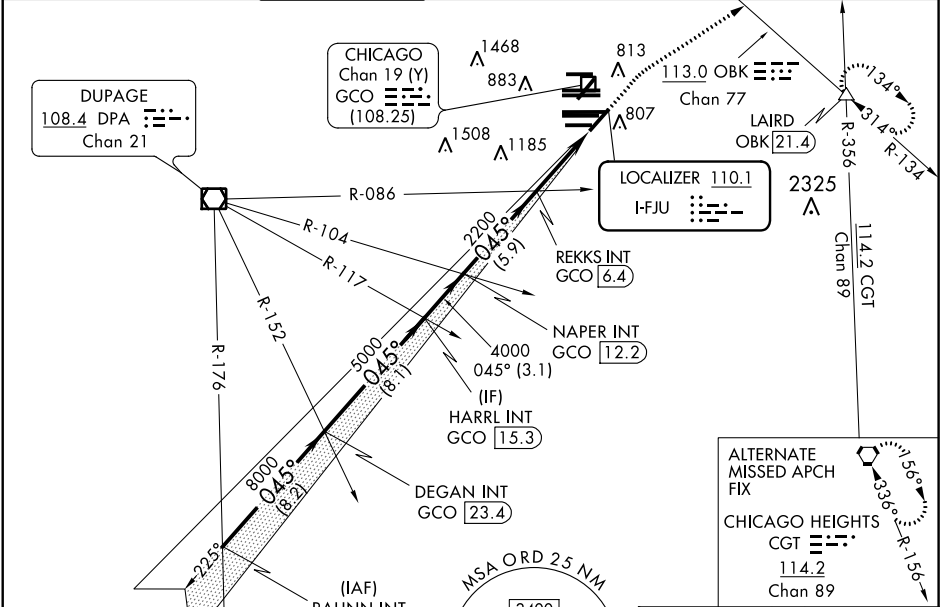
LOC I-FJU <b>110.1</b>	APP CRS <b>045°</b>	Rwy ldg TDZE Apt Elev <b>8075</b> <b>661</b> <b>680</b>
---------------------------	------------------------	------------------------------------------------------------------------

# ILS RWY 4R (SA CAT I & II)

CHICAGO O'HARE INTL (ORD)

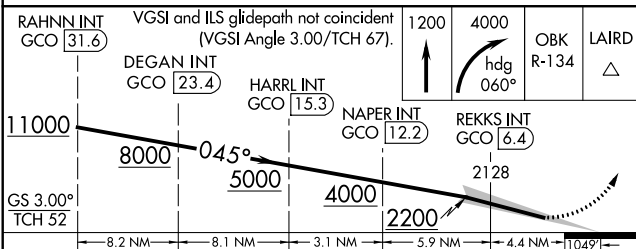
RADAR required for procedure entry.		MALSR 	MISSED APPROACH: Climb to 1200 then climbing right turn to 4000 on heading 060° and OBK VOR/DME R-134 to LAIRD INT/OBK 21.4 DME and hold.
Simultaneous approach authorized. SA CAT I: Requires specific OPSPEC, MSPEC, or LOA approval and use of HUD to DH. SA CAT II: Reduced lighting: Requires specific OPSPEC, MSPEC, or LOA approval and use of autoland or HUD to touchdown.			

D-ATIS <b>135.4</b> <b>282.225</b>	CHICAGO APP CON <b>119.0 292.125</b>	O'HARE TOWER <b>120.75 348.0</b>	GND CON (TWR NORTH) <b>124.125</b> (TWR SOUTH) <b>118.05</b> (ALL TWRs) <b>226.675</b>	(TWR CENTER) <b>121.75</b> (OBND) <b>121.9</b> (IBND)	CLNC DEL <b>121.6</b>	CPDLC
------------------------------------------	-----------------------------------------	-------------------------------------	-------------------------------------------------------------------------------------------------------	-------------------------------------------------------------	--------------------------	-------



ALTERNATE MISSED APCH FIX

CHICAGO HEIGHTS  
CGT 114.2  
Chan 89



CATEGORY	A	B	C	D
S-ILS 4R	SA CAT I	RA 160/16	150 DA 811	
S-ILS 4R	SA CAT II	RA 111/12	100 DA 761	

ELEV 680 TDZE 661

TWR 914, TWR 910, TWR 876

HIRL all Rwys  
TDZ/CL all Rwys except 4L

## SA CATEGORY I & II ILS - SPECIAL AIRCREW & AIRCRAFT CERTIFICATION REQUIRED

EC-3, 16 JUN 2022 to 14 JUL 2022

EC-3, 16 JUN 2022 to 14 JUL 2022