

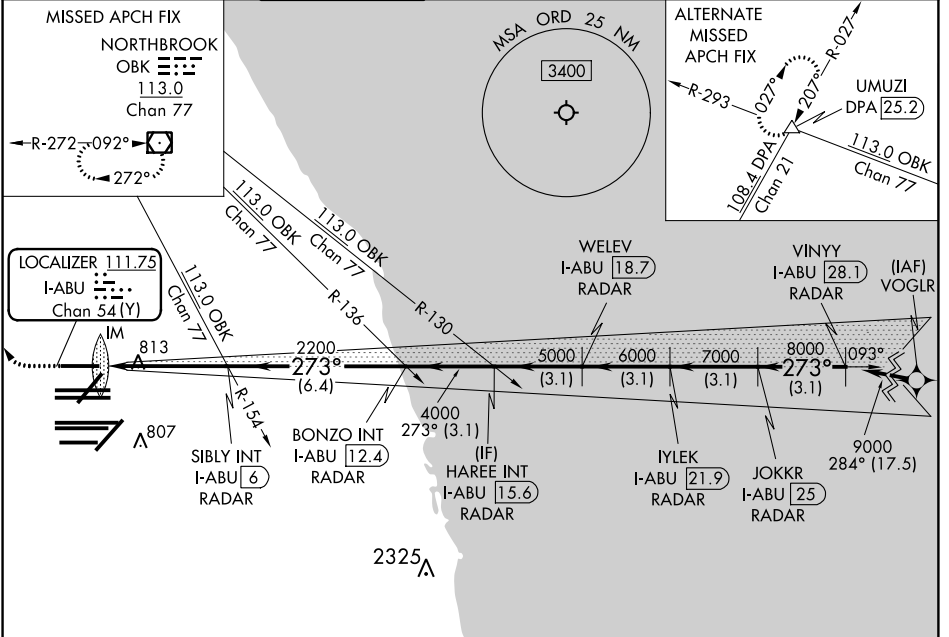
LOC/DME I-ABU 111.75 Chan 54 (Y)	APP CRS 273°	Rwy ldg 7500 TDZE 664 Apt Elev 680
---	------------------------	---

ILS RWY 27R (CAT II & III)

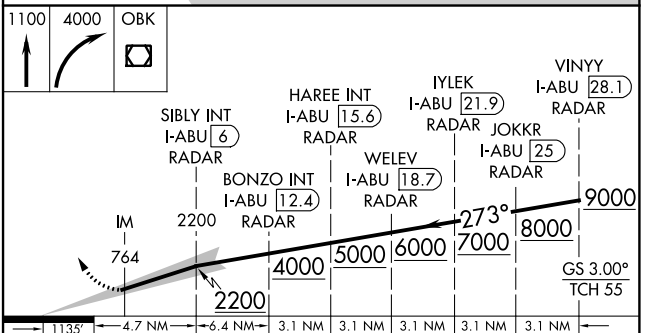
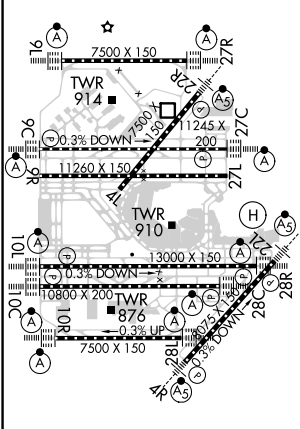
CHICAGO O'HARE INTL (ORD)

RNAV-1 GPS or RADAR required for procedure entry. RADAR or DME required.		ALSF-2	MISSED APPROACH: Climb to 1100 then climbing right turn to 4000 direct OBK VOR/DME and hold, continue climb-in-hold to 4000.	
Simultaneous approach authorized.				

D-ATIS 135.4 282.225	CHICAGO APP CON 119.0 292.125	O'HARE TOWER 128.15 348.0	GND CON (TWR NORTH) 124.125 (TWR SOUTH) 118.05 (ALL TWRs) 226.675	(TWR CENTER) (OBND) 121.75 (IBND) 121.9	CLNC DEL 121.6	CPDLC
--	---	-------------------------------------	---	--	--------------------------	-------



ELEV 680	D	TDZE 664
----------	----------	----------



CATEGORY	A	B	C	D
S-ILS-27R	CAT II RA 101/12 100 DA 764			
S-ILS-27R	CAT III RVR 06			

CATEGORY II & III ILS - SPECIAL AIRCREW & AIRCRAFT CERTIFICATION REQUIRED

EC-3, 16 JUN 2022 to 14 JUL 2022

EC-3, 16 JUN 2022 to 14 JUL 2022