

LOC/DME I-HAC 110.5 Chan 42	APP CRS 273°	Rwy Idg 10260 TDZE 654 Apt Elev 680
---	------------------------	--

ILS RWY 27L (SA CAT I)

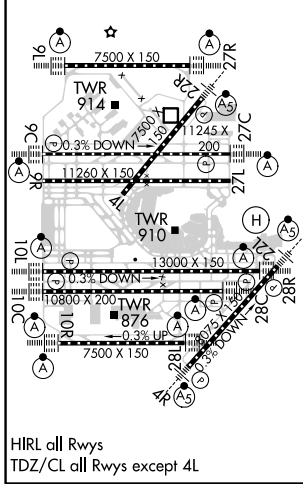
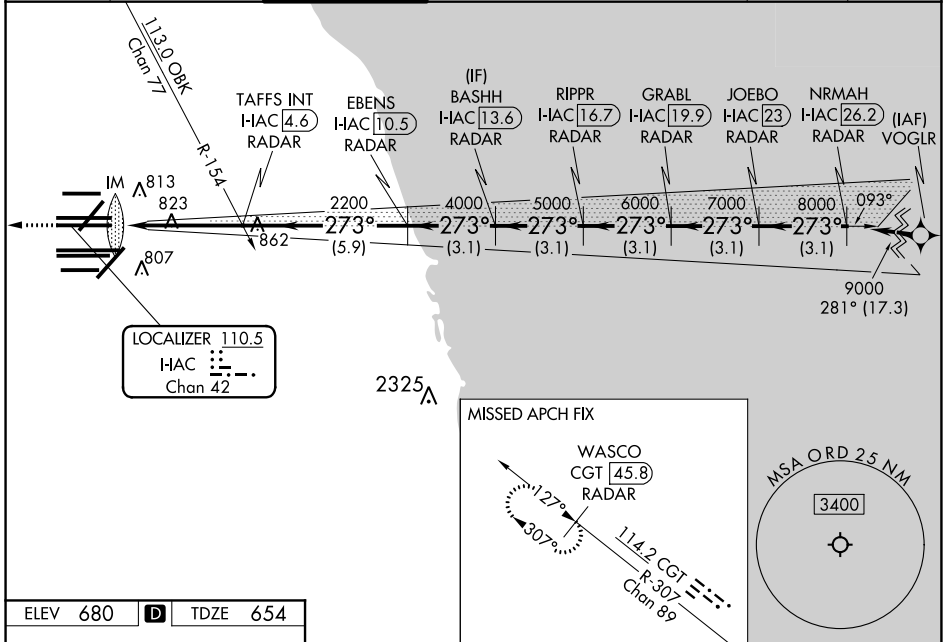
CHICAGO O'HARE INTL (ORD)

From VOGLR: RNAV 1-GPS required. Aircraft not GPS equipped - RADAR required for procedure entry. DME or RADAR required.

Simultaneous approach authorized.
Requires specific OPSPEC, MSPEC, or LOA approval and use of HUD to DH.

MISSED APPROACH: Climb to 1200 then climb to 4000 on heading 265° and on CGT VORTAC R-307 to WASCO/CGT 45.8 DME/RADAR and hold.

D-ATIS 135.4 282.225	CHICAGO APP CON 119.0 292.125	O'HARE TOWER 126.9 348.0	GND CON (TWR NORTH) 124.125 (TWR SOUTH) 118.05 (ALL TWRs) 226.675	(TWR CENTER) (OBND) 121.75 (IBND) 121.9	CLNC DEL 121.6	CPDLC
--	---	------------------------------------	---	--	--------------------------	-------



ELEV 680	D	TDZE 654	1200	4000	CGT R-307	WASCO CGT 45.8 RADAR	VGSI and ILS glidepath not coincident.
hdg 265°		BASHH I-HAC 13.6 RADAR		GRABL I-HAC 19.9 RADAR		NRMAH I-HAC 26.2 RADAR	
TAFS INT I-HAC 4.6 RADAR		EBENS I-HAC 10.5 RADAR		RIPPR I-HAC 16.7 RADAR		JOEBO I-HAC 23 RADAR	
I-HAC DME ANTENNA		2200		4000		5000 6000 7000 8000 9000	
IM		4.7 NM		-5.9 NM		3.1 NM 3.1 NM 3.1 NM 3.1 NM 3.1 NM	
CATEGORY	A		B		C		D
S-ILS 27L	RA 164/14		150 DA 804				

SA CATEGORY I ILS - SPECIAL AIRCREW & AIRCRAFT CERTIFICATION REQUIRED

EC-3, 16 JUN 2022 to 14 JUL 2022

EC-3, 16 JUN 2022 to 14 JUL 2022