

LOC/DME I-UYJ 111.9 Chan 56	APP CRS 273°	Rwy ldg 11245 TDZE 653 Apt Elev 680
---	------------------------	--

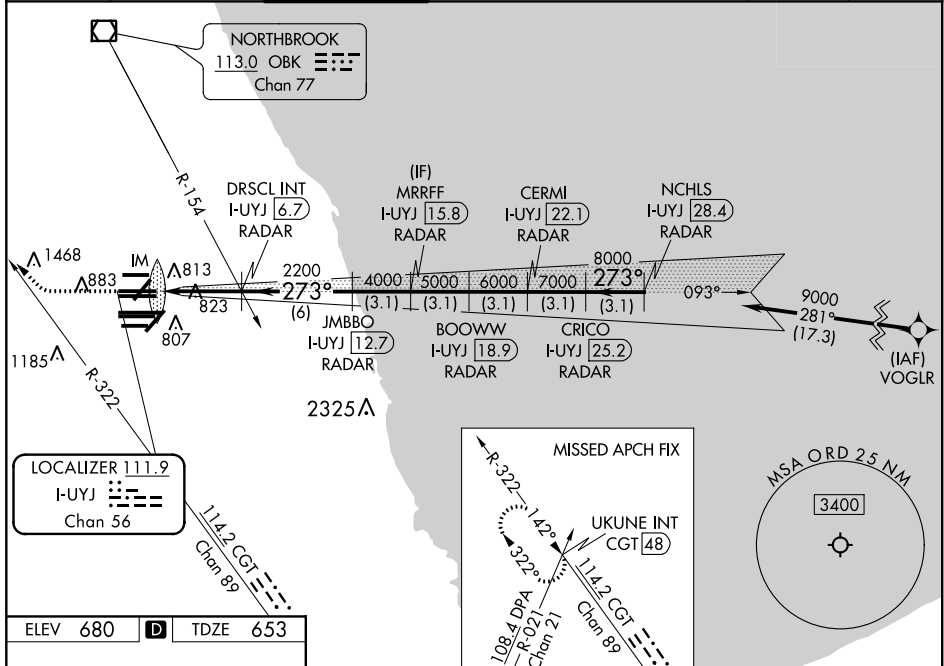
ILS RWY 27C (CAT II & III)
CHICAGO O'HARE INTL (ORD)

From VOGLR: RNAV 1-GPS required. Aircraft not GPS equipped - RADAR required for procedure entry. DME or RADAR required.

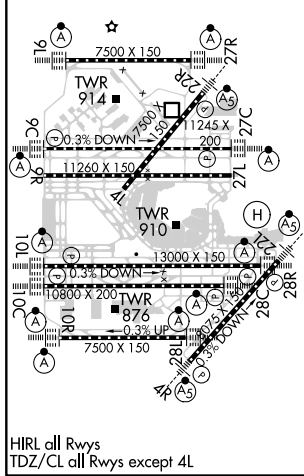
ALSF-2
MISSED APPROACH: Climb to 1100 then climbing right turn to 4000 on heading 290° and CGT R-322 to UKUNE INT/CGT 48 DME and hold.

Simultaneous approach authorized. CAT II: RVR 1000 authorized with specific OPSPEC, MSPEC, or LOA approval and use of autoland or HUD to touchdown.

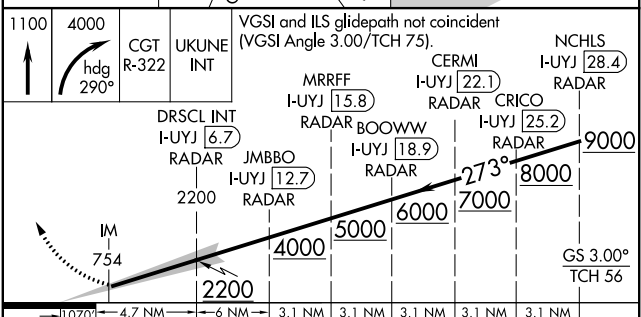
D-ATIS 135.4 282.225	CHICAGO APP CON 119.0 292.125	O'HARE TOWER 121.15 348.0	GND CON (TWR CENTER) 124.125 (TWR NORTH) 118.05 (TWR SOUTH) 226.675 (ALL TWRS)	(TWR CENTER) (OBND) 121.75 (IBND) 121.9	CLNC DEL 121.6	CPDLC
--	---	-------------------------------------	--	--	--------------------------	-------



ELEV 680	D	TDZE 653
-----------------	----------	-----------------



HIRL all Rwys
TDZ/CL all Rwys except 4L



1100	4000	CGT R-322	UKUNE INT	VGSI and ILS glidepath not coincident (VGSI Angle 3.00/TCH 75).	NCHLS I-UYJ 28.4									
<table border="1"> <tr> <td>DRSCL INT I-UYJ 6.7</td> <td>MRRFF I-UYJ 15.8</td> <td>CERM I-UYJ 22.1</td> <td colspan="2">RADAR</td> </tr> <tr> <td>JMBBO I-UYJ 12.7</td> <td>BOOWW I-UYJ 18.9</td> <td>CRICO I-UYJ 25.2</td> <td colspan="2">RADAR</td> </tr> </table>					DRSCL INT I-UYJ 6.7	MRRFF I-UYJ 15.8	CERM I-UYJ 22.1	RADAR		JMBBO I-UYJ 12.7	BOOWW I-UYJ 18.9	CRICO I-UYJ 25.2	RADAR	
DRSCL INT I-UYJ 6.7	MRRFF I-UYJ 15.8	CERM I-UYJ 22.1	RADAR											
JMBBO I-UYJ 12.7	BOOWW I-UYJ 18.9	CRICO I-UYJ 25.2	RADAR											
2200	4000	5000	6000	7000	9000									
3.1 NM	3.1 NM	3.1 NM	3.1 NM	3.1 NM	3.1 NM									

CATEGORY II & III ILS - SPECIAL AIRCREW & AIRCRAFT CERTIFICATION REQUIRED

EC-3, 16 JUN 2022 to 14 JUL 2022

EC-3, 16 JUN 2022 to 14 JUL 2022