

# ILS RWY 22L (SA CAT I & II)

CHICAGO O'HARE INTL (ORD)

LOC I-LQQ	APP CRS	Rwy ldg TDZE	8075 654 680
<b>110.1</b>	<b>225°</b>	Apt Elev	

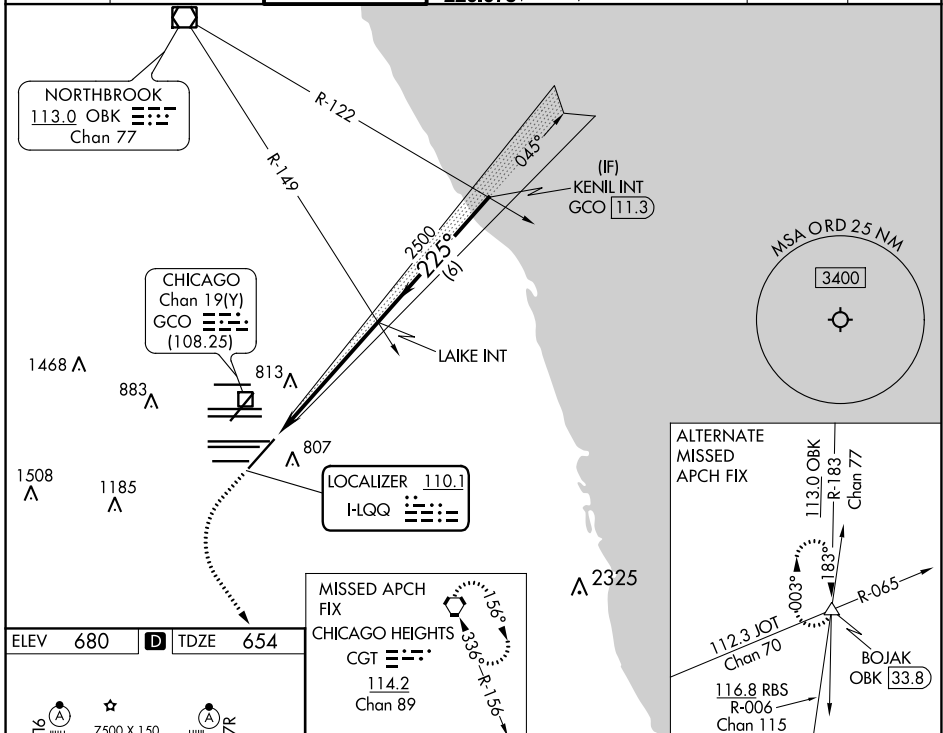
RADAR required for procedure entry.

Simultaneous approach authorized.  
 SA CAT I: Requires specific OPSPEC, MSPEC, or LOA approval and use of HUD to DH.  
 SA CAT II: Reduced lighting: Requires specific OPSPEC, MSPEC, or LOA approval and use of autoland or HUD to touchdown.

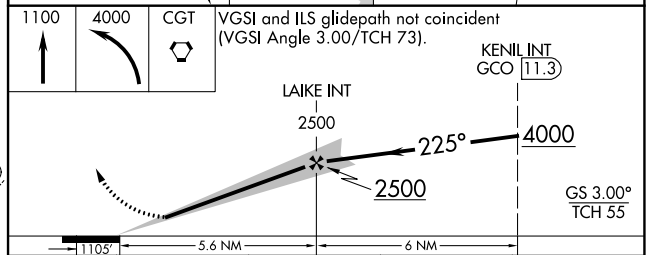
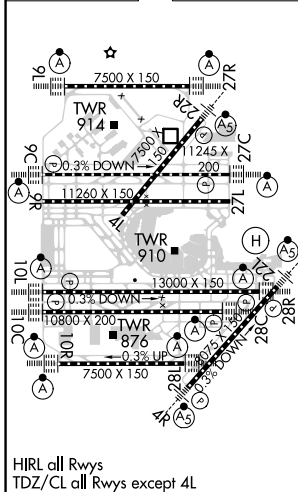


MISSED APPROACH:  
 Climb to 1100 then climbing left turn to 4000 direct CGT VORTAC and hold.

D-ATIS	CHICAGO APP CON	O'HARE TOWER	GND CON (TWR NORTH)	(TWR CENTER)	CLNC DEL	CPDLC
135.4	119.0 292.125	120.75 348.0	124.125 (TWR NORTH)	121.75 (OBND)	121.6	
282.225			118.05 (TWR SOUTH)	121.9 (IBND)		
			226.675 (ALL TWRs)			



ELEV	680	D	TDZE	654
------	-----	---	------	-----



CATEGORY	A	B	C	D
S-ILS 22L	SA CAT I	RA 164/16	150 DA 804	
S-ILS 22L	SA CAT II	RA 112/12	100 DA 754	

**SA CATEGORY I & II ILS - SPECIAL AIRCREW & AIRCRAFT CERTIFICATION REQUIRED**

EC-3, 16 JUN 2022 to 14 JUL 2022

EC-3, 16 JUN 2022 to 14 JUL 2022