

LOC/DME I-SXH 108.95 Chan 26(Y)	APP CRS 093°	Rwy Idg TDZE 669 Apt Elev 680
--	------------------------	---

ILS RWY 10C (SA CAT I)

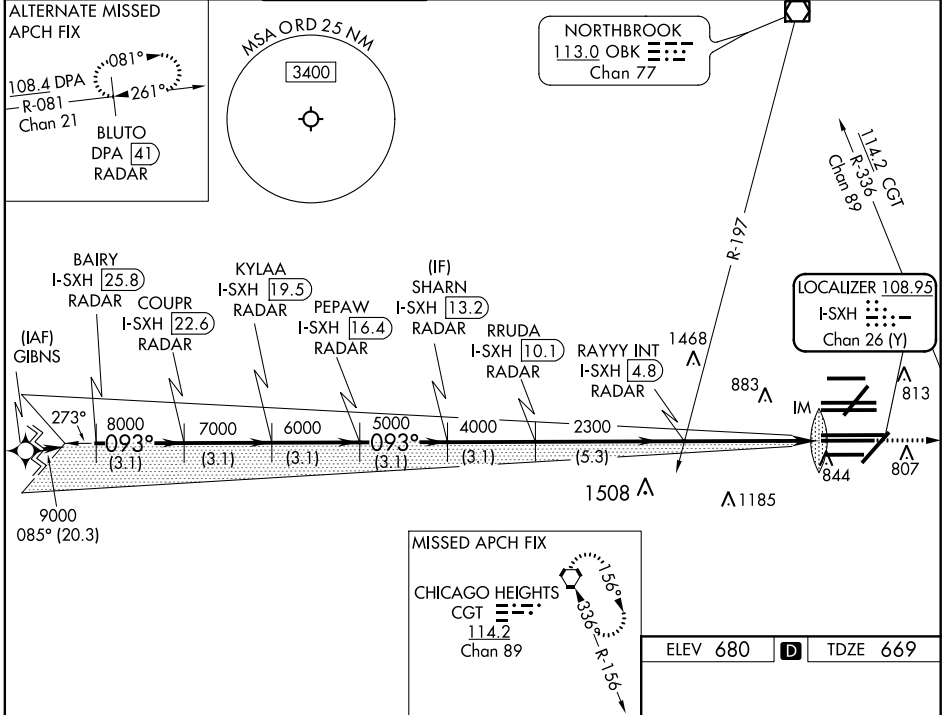
CHICAGO O'HARE INTL (ORD)

From GIBNS: RNAV-1 GPS required.
 RNAV 1-GPS or RADAR required for procedure entry. DME or RADAR required.
 Simultaneous approach authorized. Requires specific OPSPEC, MSPEC, or LOA approval and use of HUD to DH.



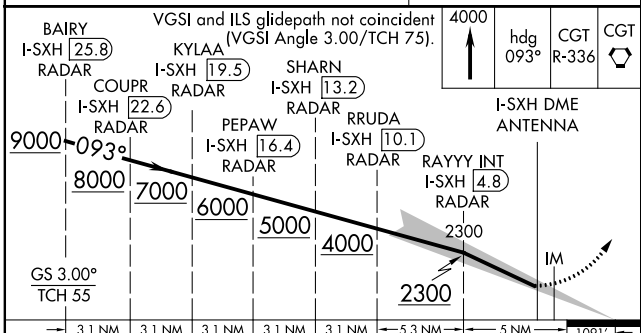
MISSED APPROACH: Climb to 4000 on heading 093° and CGT VORTAC R-336 to CGT VORTAC and hold.

D-ATIS 135.4 282.225	CHICAGO APP CON 119.0 292.125	O'HARE TOWER 120.75 348.0	GND CON (TWR CENTER) 121.75 (OBND) 121.9 (IBND)	CLNC DEL 121.6	CPDLC
--	---	-------------------------------------	---	--------------------------	-------



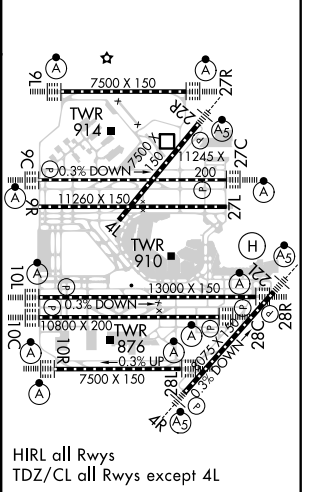
EC-3, 16 JUN 2022 to 14 JUL 2022

EC-3, 16 JUN 2022 to 14 JUL 2022



→ 3.1 NM	3.1 NM	3.1 NM	3.1 NM	3.1 NM	→ 5.3 NM	→ 5 NM	→ 1091'
CATEGORY	A	B	C	D			
S-ILS 10C RA 148/14 150 DA 819							
SA CATEGORY I ILS - SPECIAL AIRCREW & AIRCRAFT CERTIFICATION REQUIRED							

ELEV 680	D	TDZE 669
----------	---	----------



HIRL all Rwy's
 TDZ/CL all Rwy's except 4L