

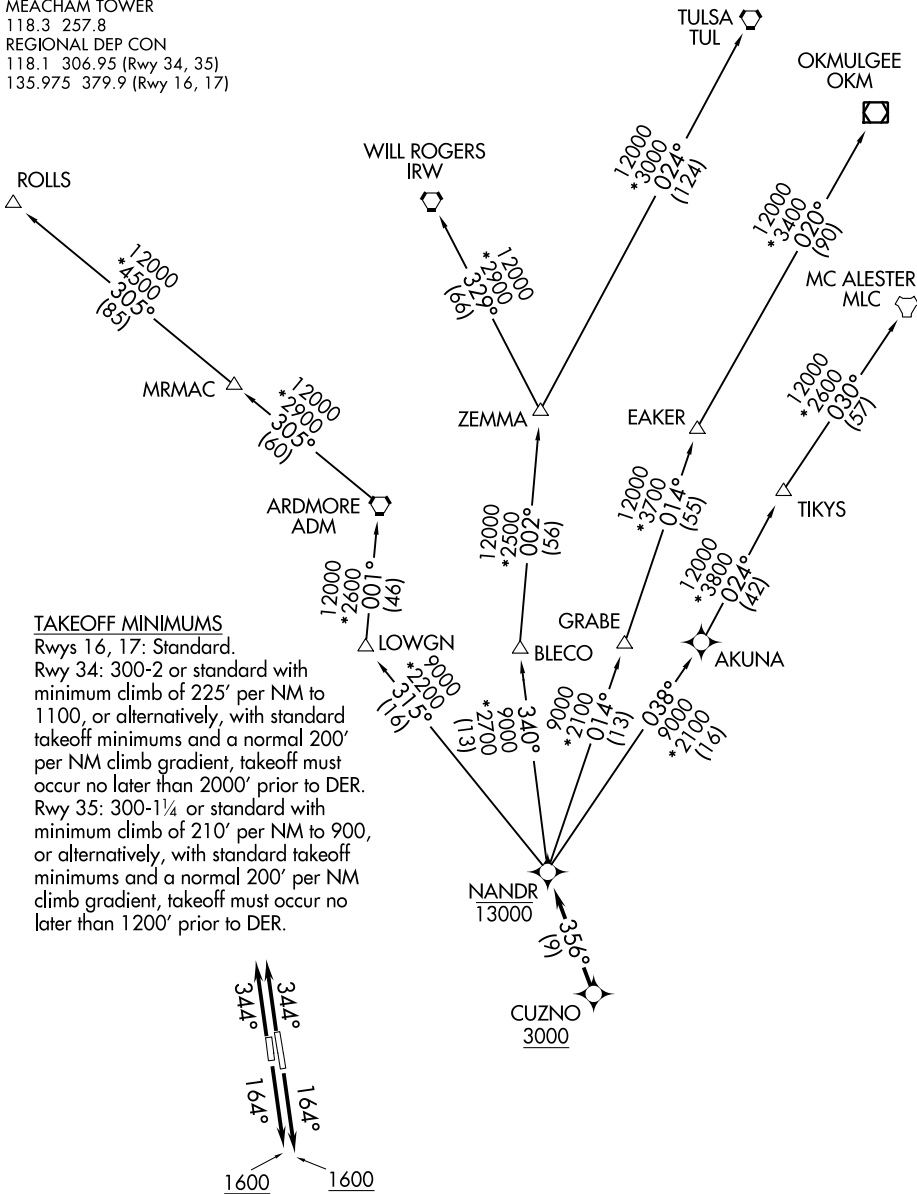
NANDR ONE DEPARTURE (RNAV)

ATIS 120.7
 CLNC DEL
 124.65
 GND CON 121.9
 MEACHAM TOWER
 118.3 257.8
 REGIONAL DEP CON
 118.1 306.95 (Rwy 34, 35)
 135.975 379.9 (Rwy 16, 17)

RNAV 1 - DME/DME/IRU or GPS.

RADAR required.

**TOP ALTITUDE:
 ASSIGNED BY ATC**



SC-2, 16 JUN 2022 to 14 JUL 2022

SC-2, 16 JUN 2022 to 14 JUL 2022

NOTE: Chart not to scale.

(NARRATIVE ON FOLLOWING PAGE)

NANDR ONE DEPARTURE (RNAV)

(NANDR1.NANDR) 19MAY22