

KUSSO ONE DEPARTURE (RNAV)

SC-2, 16 JUN 2022 to 14 JUL 2022

TAKEOFF MINIMUMS

Rwys 16, 17: Standard.

Rwy 34: 300-2 or standard with minimum climb of 225' per NM to 1100,

or alternatively, with standard takeoff minimums and a normal 200' per NM climb gradient, takeoff must occur no later than 2000' prior to DER.

Rwy 35: 300-1/4 or standard with minimum climb of 210' per NM to 900,

or alternatively, with standard takeoff minimums and a normal 200' per NM climb gradient, takeoff must occur no later than 1200' prior to DER.

ATIS

120.7

CUNCL DEL

124.65

GND CON

121.9

MEACHAM TOWER

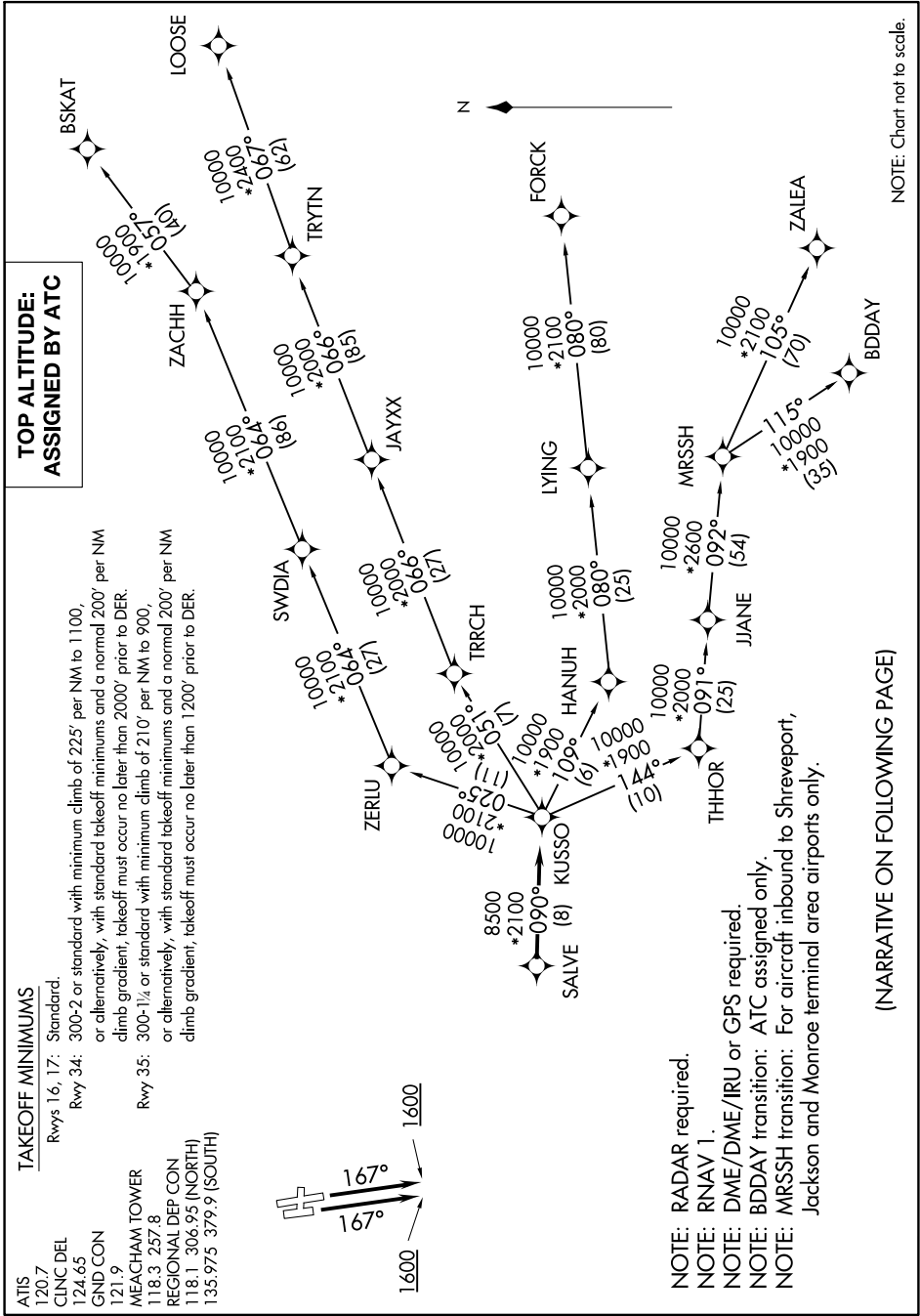
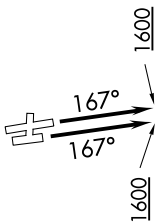
118.3 257.8

REGIONAL DEP CON

118.1 304.95 (NORTH)

135.975 379.9 (SOUTH)

TOP ALTITUDE: ASSIGNED BY ATC



- NOTE: RADAR required.
- NOTE: RNAV 1.
- NOTE: DME/DME/IRU or GPS required.
- NOTE: BDDAY transition: ATC assigned only.
- NOTE: MRSSH transition: For aircraft inbound to Shreveport, Jackson and Monroe terminal area airports only.

(NARRATIVE ON FOLLOWING PAGE)

NOTE: Chart not to scale.

SC-2, 16 JUN 2022 to 14 JUL 2022