

VORTAC RSW 114.15 Chan 88(Y)	APP CRS 129°	Rwy Idg 4297 TDZE 15 Apt Elev 17
--	------------------------	---

VOR RWY 13

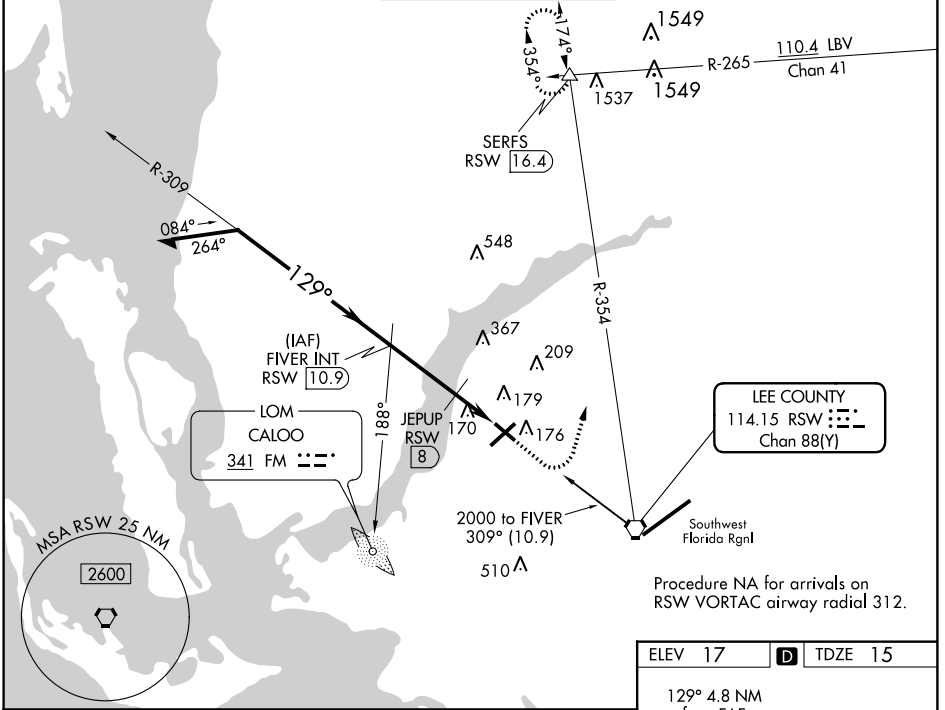
PAGE FLD (FMY)

ADF or DME required.

When Circling to Rwy 31 at night, operational VGSI required, remain on or above VGSI glidepath until threshold.

MISSED APPROACH: Climb to 1000 then climbing left turn to 2600 on RSW VORTAC R-354 to SERFS INT/RSW 16.4 DME and hold.

ATIS 123.725	FORT MYERS APP CON ★ 125.15 306.2 (Rwys 5, 13) 126.8 306.2 (Rwys 23, 31)	PAGE TOWER ★ 119.0(CTAF) 0 306.95	GND CON 121.7	CLNC DEL 121.7
------------------------	--	---	-------------------------	--------------------------



Procedure NA for arrivals on RSW VORTAC airway radial 312.

ELEV 17	TDZE 15
---------	---------

REIL Rwys 5, 13, 23 and 31
MIRL Rwy 5-23 and 13-31

FAF to MAP 4.8 NM					
Knots	60	90	120	150	180
Min:Sec	4:48	3:12	2:24	1:55	1:36

CATEGORY	A		B		C		D	
	S-13	620-1	605 (700-1)	620-1 ³ / ₄	605 (700-1 ³ / ₄)	620-1 ³ / ₄	680-2	663 (700-2)
CIRCLING	620-1	603 (700-1)	620-1 ³ / ₄	603 (700-1 ³ / ₄)	620-1 ³ / ₄	680-2	663 (700-2)	
JEPUP FIX MINIMUMS								
S-13	480-1	465 (500-1)	480-1 ³ / ₈	465 (500-1 ³ / ₈)	600-1 ¹ / ₂	583 (600-1 ¹ / ₂)	680-2	663 (700-2)
CIRCLING	540-1	523 (600-1)	600-1 ¹ / ₂	583 (600-1 ¹ / ₂)	680-2	663 (700-2)		

SE-3, 16 JUN 2022 to 14 JUL 2022

SE-3, 16 JUN 2022 to 14 JUL 2022