

WAAS CH 69424 W23A	APP CRS 231°	Rwy Idg TDZE Apt Elev	6001 16 17
--	------------------------	-----------------------------	---------------------------------------

RNAV (GPS) RWY 23

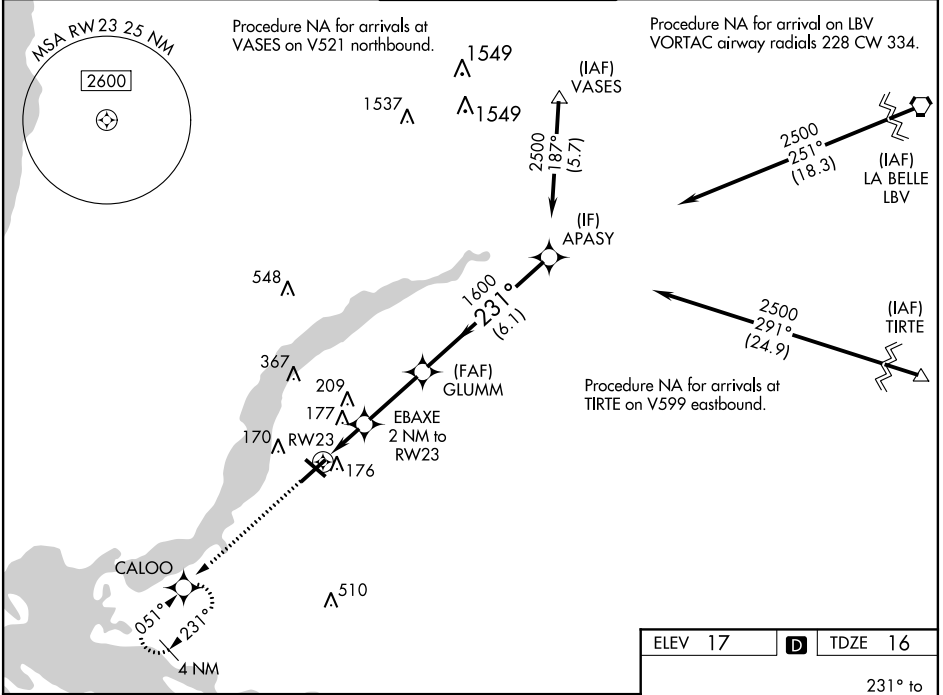
PAGE FLD (FMY)

RNP APCH.

▼ When Circling to Rwy 31 at night, operational VGSI required, remain on or above VGSI glidepath until threshold. Rwy 23 helicopter visibility reduction below $\frac{3}{4}$ SM NA. For uncompensated Baro-VNAV systems, LNAV/VNAV NA below 4°C or above 54°C.

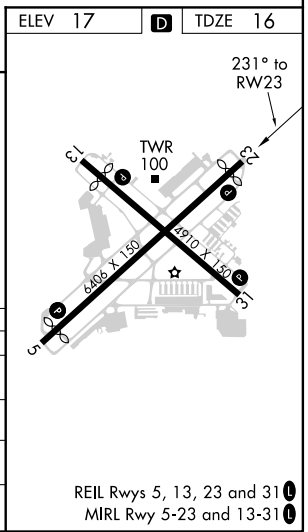
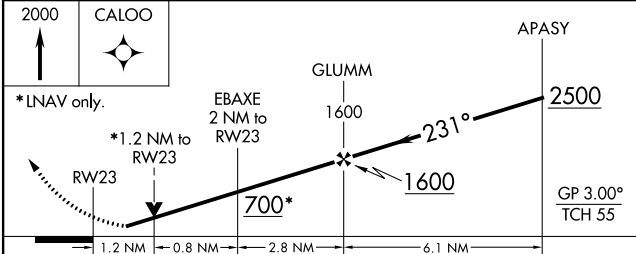
MISSED APPROACH:
Climb to 2000 direct CALOO and hold.

ATIS 123.725	FORT MYERS APP CON ★ 125.15 306.2 (Rwys 5, 13) 126.8 306.2 (Rwys 23, 31)	PAGE TOWER ★ 119.0 (CTAF) 306.95	GND CON 121.7	CLNC DEL 121.7
------------------------	--	---	-------------------------	--------------------------



SE-3, 16 JUN 2022 to 14 JUL 2022

SE-3, 16 JUN 2022 to 14 JUL 2022



CATEGORY	A	B	C	D
LPV DA	274- $\frac{3}{4}$		258 (300- $\frac{3}{4}$)	
LNAV/VNAV DA	377-1		361 (400-1)	
LNAV MDA	440-1	424 (500-1)	440-1 $\frac{1}{4}$	424 (500-1 $\frac{1}{4}$)
C CIRCLING	540-1	523 (600-1)	600-1 $\frac{1}{2}$ 583 (600-1 $\frac{1}{2}$)	680-2 663 (700-2)