

WAAS CH 73024 W13A	APP CRS 133°	Rwy Idg 4297 TDZE 15 Apt Elev 17
--	------------------------	---

RNAV (GPS) RWY 13

PAGE FLD (FMY)

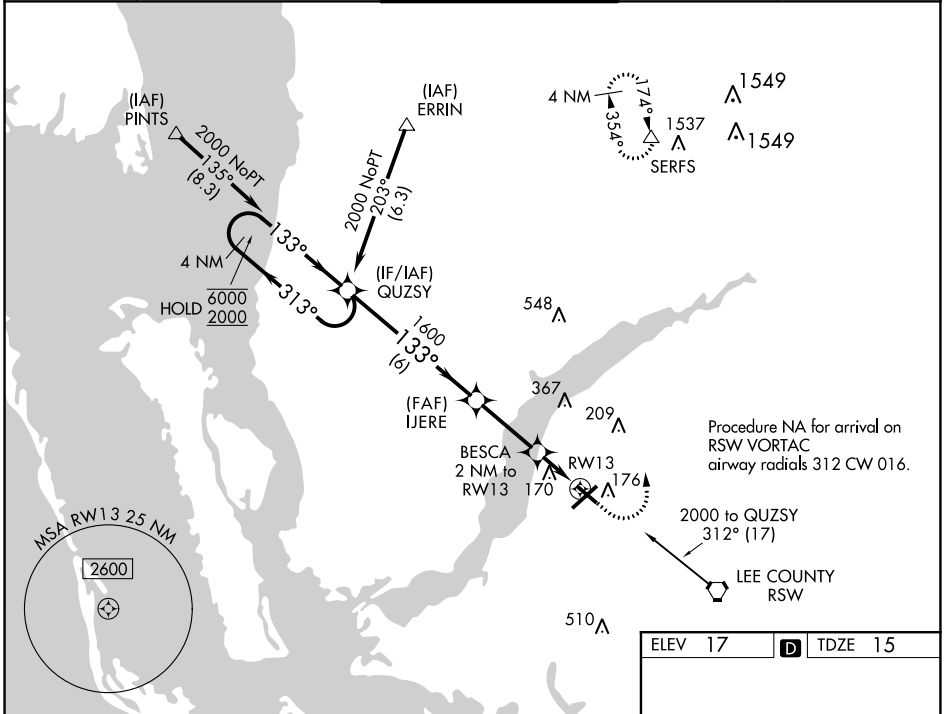
RNP APCH.

▼ When Circling to Rwy 31 at night, operational VGSI required, remain on or above VGSI glidepath until threshold. For uncompensated Baro-VNAV systems, LNAV/VNAV NA below -15°C or above 54°C.

ATIS 123.725	FORT MYERS APP CON ★ 125.15 306.2 (Rwys 5, 13) 126.8 306.2 (Rwys 23, 31)	PAGE TOWER ★ 119.0 (CTAF) 306.95
------------------------	--	---

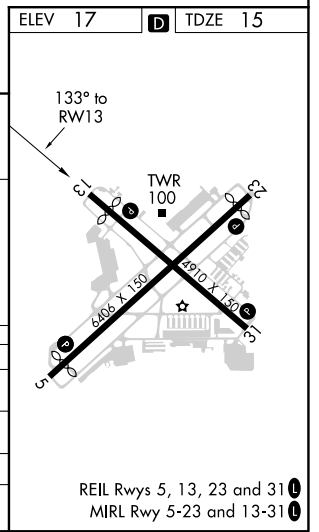
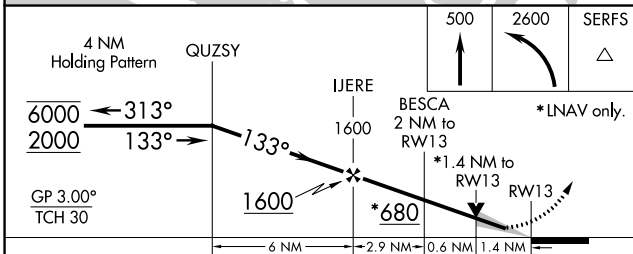
GND CON 121.7	CLNC DEL 121.7
-------------------------	--------------------------

MISSED APPROACH: Climb to 500 then climbing left turn to 2600 direct SERFS and hold.



SE-3, 16 JUN 2022 to 14 JUL 2022

SE-3, 16 JUN 2022 to 14 JUL 2022



ELEV 17	TDZE 15			
4 NM Holding Pattern	QUZSY			
6000 ← 313°	133° →			
2000				
GP 3.00°	TCH 30			
1600				
6 NM	2.9 NM			
0.6 NM	1.4 NM			
500	2600			
SERFS				
IJERE	BESCO			
1600	2 NM to RWY 13			
	*1.4 NM to RWY 13			
	RWY 13			
	*LNAV only.			
CATEGORY	A	B	C	D
LPV DA	265-1 250 (300-1)			
LNAV/VNAV DA	480-1 465 (500-1)			
LNAV MDA	480-1 465 (500-1) 480-1 465 (500-1)			
CIRCLING	540-1 523 (600-1) 600-1 583 (600-1) 680-2 663 (700-2)			