

LOC I-FMY 110.7	APP CRS 051°	Rwy Idg 5947 TDZE 15 Apt Elev 17
---------------------------	------------------------	---

ILS or LOC RWY 5

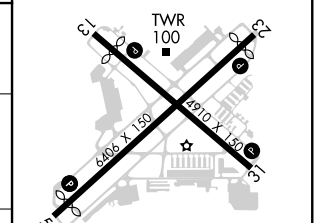
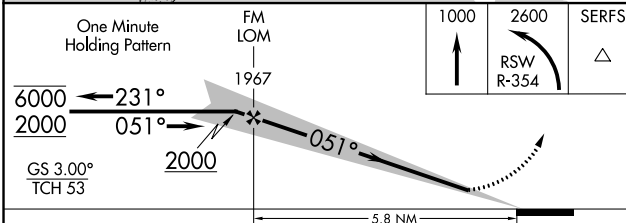
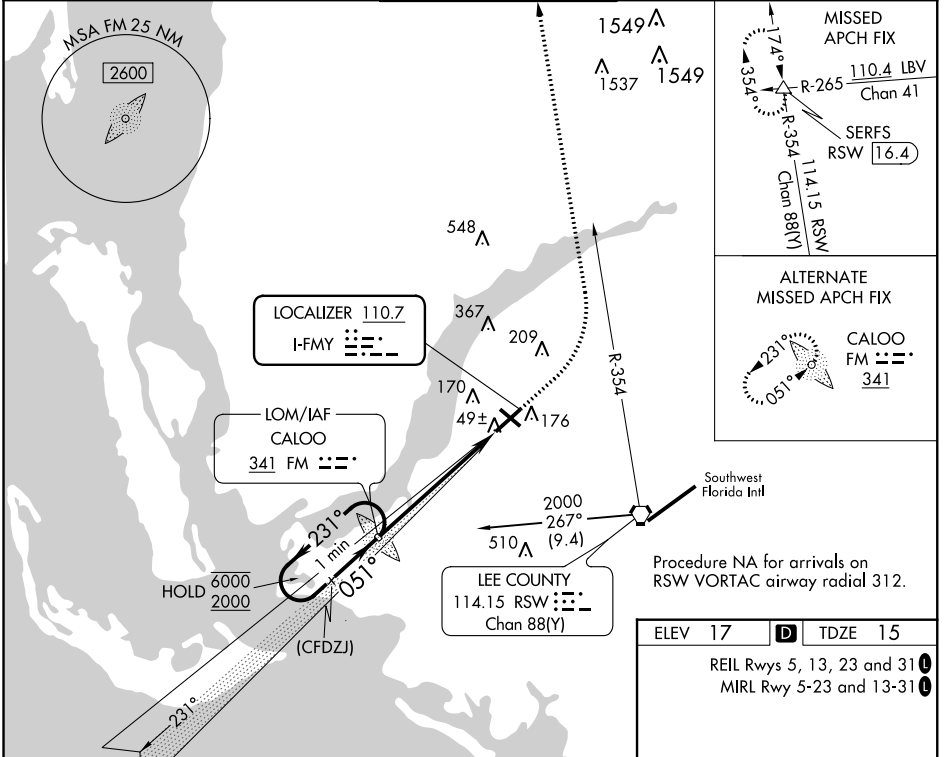
PAGE FLD (FMY)

ADF or RADAR required for procedure entry. ADF required for LOC only.

⚠ When Circling to Rwy 31 at night, operational VGSI required, remain on or above VGSI glidepath until threshold. Rwy 5 helicopter visibility reduction below ¾ SM NA.

MISSED APPROACH: Climb to 1000 then climbing left turn to 2600 on RSW R-354 to SERFS INT/RSW 16.4 DME and hold.

ATIS 123.725	FORT MYERS APP CON ★ 125.15 306.2 (Rwys 5, 13) 126.8 306.2 (Rwys 23, 31)	PAGE TOWER ★ 119.0 (CTAF) 0 306.95	GND CON 121.7	CLNC DEL 121.7
------------------------	--	---	-------------------------	--------------------------



CATEGORY	A	B	C	D
S-ILS 5	265-1 250 (300-1)			
S-LOC 5	460-1	445 (500-1)	460-1 3/8	445 (500-1 3/8)
CIRCLING	540-1	523 (600-1)	600-1 1/2 583 (600-1 1/2)	680-2 663 (700-2)

ELEV 17	TDZE 15
REIL Rwys 5, 13, 23 and 31 MIRL Rwy 5-23 and 13-31	
FAF to MAP 5.8 NM	
Knots	60 90 120 150 180
Min:Sec	5:48 3:52 2:54 2:19 1:56

SE-3, 16 JUN 2022 to 14 JUL 2022

SE-3, 16 JUN 2022 to 14 JUL 2022