

# VOR/DME RWY 36

VOR/DME FTK <b>109.6</b> Chan <b>33</b>	APCH CRS <b>349°</b>	Rwy ldg TDZE <b>5184</b> <b>740</b> Arpt Elev <b>754</b>
---	-------------------------	---

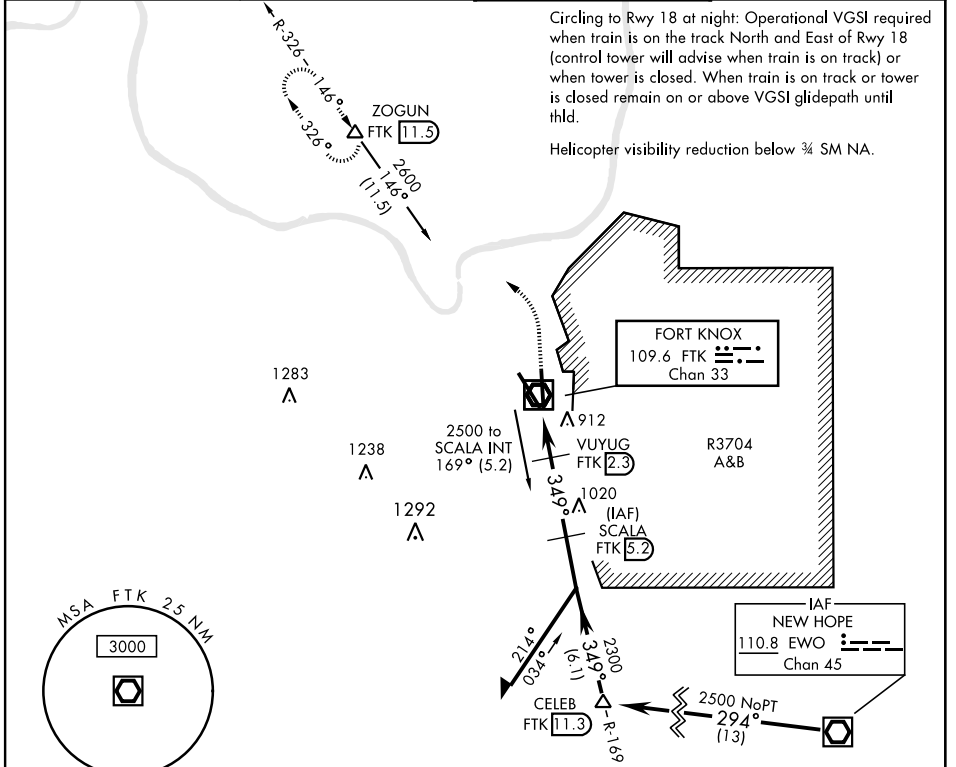
AL-151 [USA]

GODMAN AAF (KFTK)

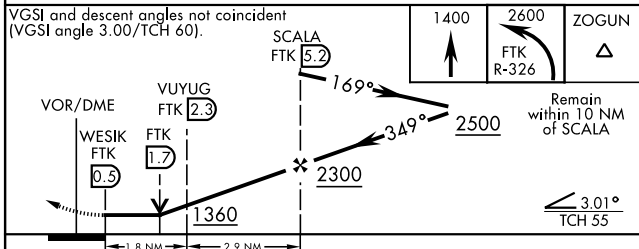
▼ \* When ALS inop increase CAT D vis to 1 3/8 mile.  
\*\* Circling not authorized E of Rwy 18-36.

ODALS  
MISSED APPROACH: Climb to 1400, then climbing left turn to 2600 on FTK VOR/DME R-326 to ZOGUN INT/FTK 11.5 DME and hold.

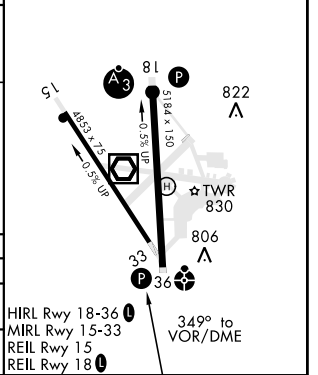
ATIS <b>109.6</b>	LOUISVILLE APP CON <b>132.075 327.0</b>	TOWER ★ <b>133.35</b> (CTAF) <b>0</b>	GND CON <b>121.9 239.3</b>
----------------------	--	--	-------------------------------



ELEV <b>754</b>	TDZE <b>740</b>
-----------------	-----------------



CATEGORY	A	B	C	D
S-36*	1180-3/4 439 (500-3/4)		1180-1/8 439 (500-1/8)	
CIRCLING**	1300-1 545 (600-1)		1300-1 1/2 545 (600-1 1/2)	1320-2 565 (600-2)



# VOR/DME RWY 36

SE-1, 16 JUN 2022 to 14 JUL 2022

SE-1, 16 JUN 2022 to 14 JUL 2022