

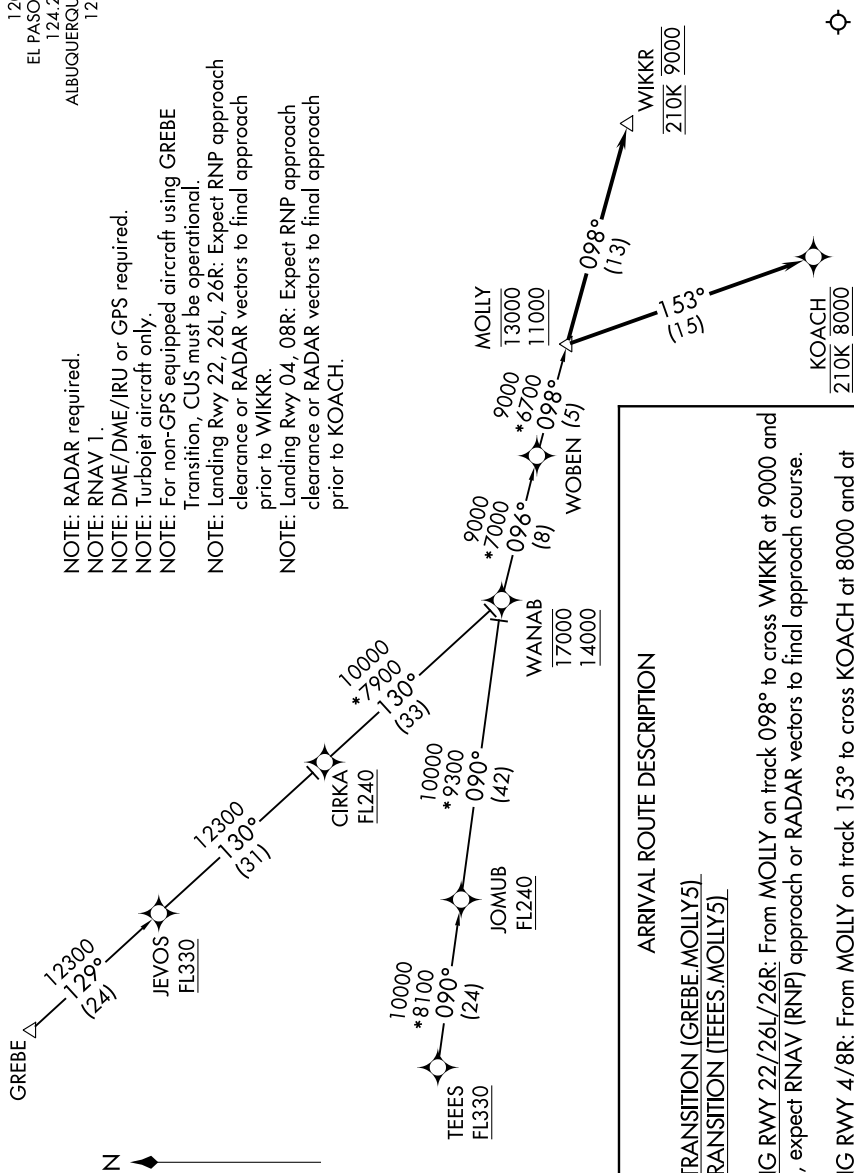
(MOLLY.MOLLY5) 20310
MOLLY FIVE ARRIVAL (RNAV)

AL-134 (FAA)

EL PASO INTL (ELP)
 EL PASO, TEXAS

D-ATIS
 120.0 254.3
 EL PASO APP CON
 124.25 298.85
 ALBUQUERQUE CENTER
 128.2 285.5

- NOTE: RADAR required.
 NOTE: RNAV 1.
 NOTE: DME/DME/IRU or GPS required.
 NOTE: Turbojet aircraft only.
 NOTE: For non-GPS equipped aircraft using GREBE Transition, CUS must be operational.
 NOTE: Landing Rwy 22, 26L, 26R: Expect RNP approach clearance or RADAR vectors to final approach prior to WIKKR.
 NOTE: Landing Rwy 04, 08R: Expect RNP approach clearance or RADAR vectors to final approach prior to KOACH.



ARRIVAL ROUTE DESCRIPTION

GREBE TRANSITION (GREBE.MOLLY5)
TEEES TRANSITION (TEEES.MOLLY5)

LANDING RWY 22/26L/26R: From MOLLY on track 098° to cross WIKKR at 9000 and at 210K, expect RNAV (RNP) approach or RADAR vectors to final approach course.

LANDING RWY 4/8R: From MOLLY on track 153° to cross KOACH at 8000 and at 210K, expect RNAV (RNP) approach or RADAR vectors to final approach course.

SC-3, 16 JUN 2022 to 14 JUL 2022

SC-3, 16 JUN 2022 to 14 JUL 2022

MOLLY FIVE ARRIVAL (RNAV)
(MOLLY.MOLLY5) 05NOV20

EL PASO, TEXAS
 EL PASO INTL (ELP)