

EL PASO, TEXAS

HI-VOR or TACAN RWY 26L

EL PASO INTL (KELP)

VORTAC ELP 115.2 Chan 99	APCH CRS 245°	Rwy ldg THRE 3962 Arpt Elev 3962
--	-------------------------	--

AL-134 [USAF]

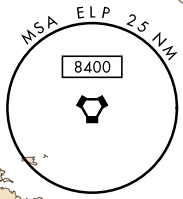
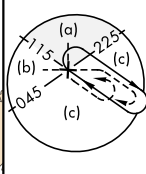
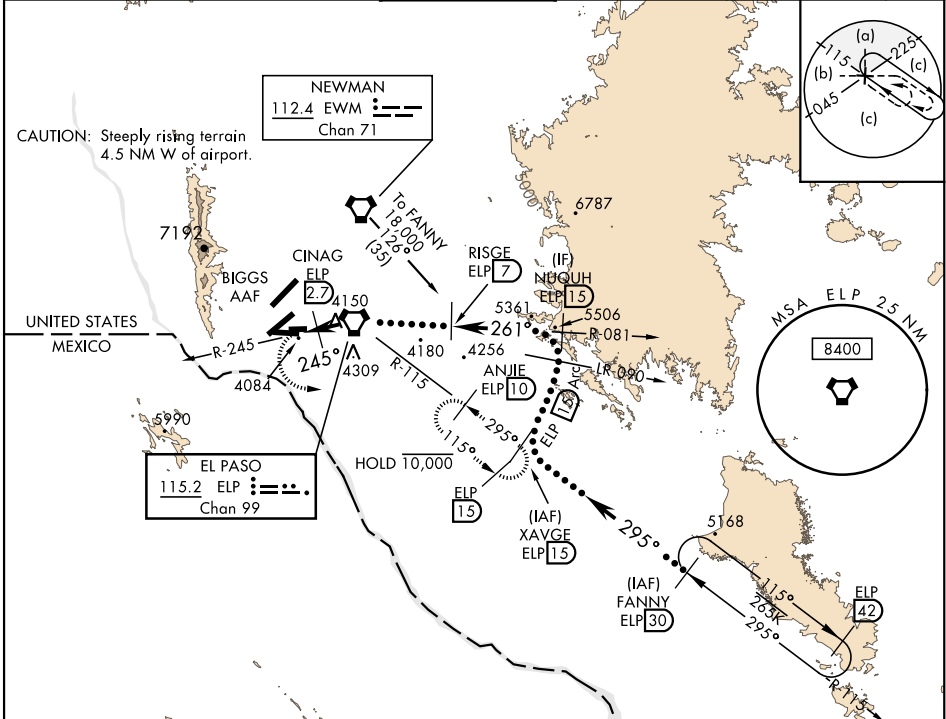
DME required.



MISSED APPROACH: Climb to 4400, then climbing left turn to 7000 via heading 080° and ELP VORTAC R-115 to ANJIE/ELP 10 DME and hold, continue climb in hold to 7000.

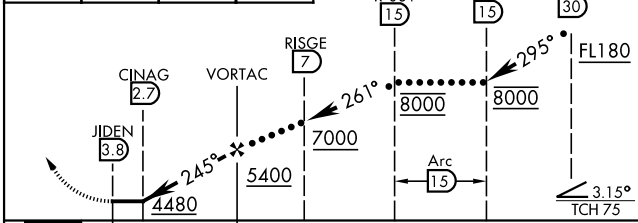
▲ *When ALS inop, increase CAT CDE vis to 1½ miles.
 ** Circling NA for CAT DE west of Rwy 4-22.

ATIS 120.0 254.3	APP CON S of V16 119.15 353.5 N of V16 124.25 298.85	TOWER 118.3 239.275	GND CON 121.9 348.6	CLNC DEL 125.0 379.1	ASR
----------------------------	--	-------------------------------	-------------------------------	--------------------------------	-----

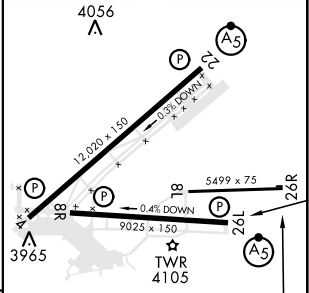


EMERG SAFE ALT 100 NM 16,000

4400	7000	ELP R-115	ANJIE ELP 10
------	------	-----------	--------------



ELEV 3962	THRE 3962
-----------	-----------



CATEGORY	C	D	E
S-26L*	4340-1	378 (400-1)	
CIRCLING**	4460-1½ 498 (600-1½)	4680-2¼ 718 (800-2¼)	4700-2½ 738 (800-2½)

REIL Rwy 4, BR
 MIRL Rwy 8L-26R
 HIRL Rwy 4-22 and 8R-26L

EL PASO, TEXAS

31°48'N-106°23'W

EL PASO INTL (KELP)

Amdt 4A 24FEB22

HI-VOR or TACAN RWY 26L

SC-3, 16 JUN 2022 to 14 JUL 2022

SC-3, 16 JUN 2022 to 14 JUL 2022