

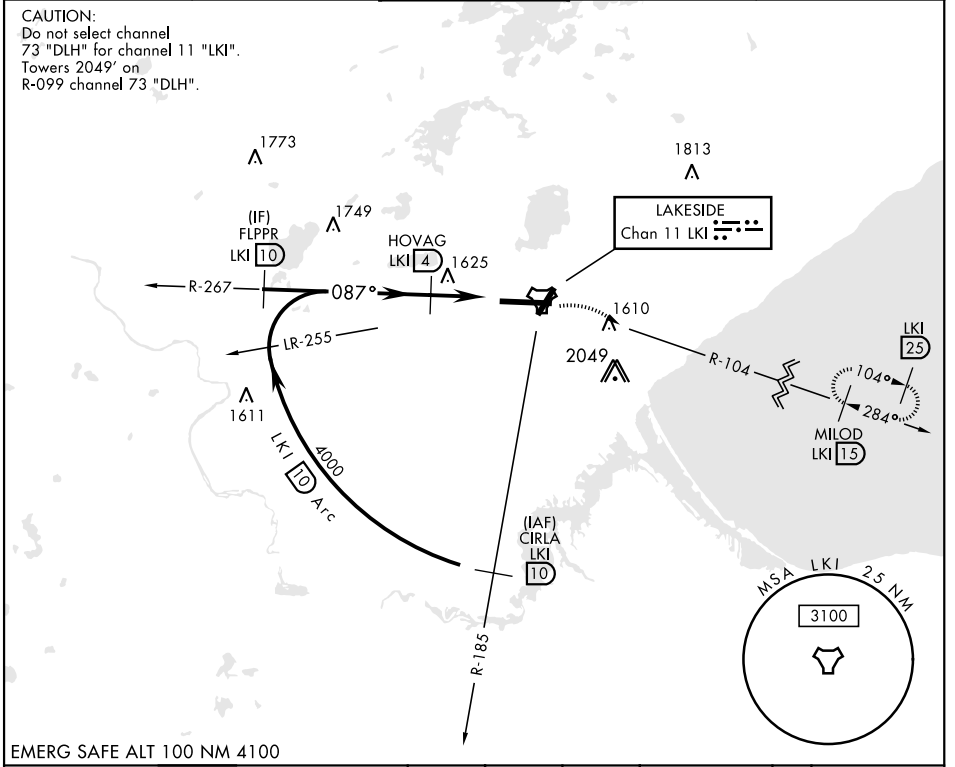
DULUTH, MINNESOTA

# TACAN RWY 9

TACAN LKI Chan 11	APCH CRS <b>087°</b>	Rwy Ldg <b>10,062</b> THRE <b>1428</b> Arprt Elev <b>1428</b>	AL-125 [USAF]	DULUTH INTL (KDLH)
----------------------	-------------------------	---	---------------	--------------------

RADAR required.		ALSF-2	MISSED APPROACH: Climb to 2500 then climbing right turn to 4000 via LKI R-104 to MILOD (15 DME) and hold.
*When ALS inop, increase CAT E vis to 1 3/8 miles. **Circling NA for CAT E SE of Rwy 3 and 27.			

ATIS <b>124.1 270.1</b>	APP CON <b>125.45 233.7</b>	TOWER <b>118.3 257.8</b>	GND CON <b>121.9 348.6</b>	ASR
----------------------------	--------------------------------	-----------------------------	-------------------------------	-----



EMERG SAFE ALT 100 NM 4100

	2500	4000	MILOD	ELEV 1428	THRE 1428
		LKI R-104	LKI 15		
Rwy 9 Ldg 10,062'				Rwy 27 Ldg 10,062'	
CATEGORY	A	B	C	D	E
S-9 *	1880/24 452 (500-1/2)		1880/45	452 (500-1)	
CIRCLING **	1920-1 492 (500-1)		1920-1 1/2 492 (500-1 1/2)	1980-2 552 (600-2)	2060-2 1/4 632 (700-2 1/4)
DULUTH, MINNESOTA				DULUTH INTL (KDLH)	
Amdt 3				TACAN RWY 9	

DULUTH, MINNESOTA 46° 51' N-92° 12' W

NC-1, 16 JUN 2022 to 14 JUL 2022

NC-1, 16 JUN 2022 to 14 JUL 2022