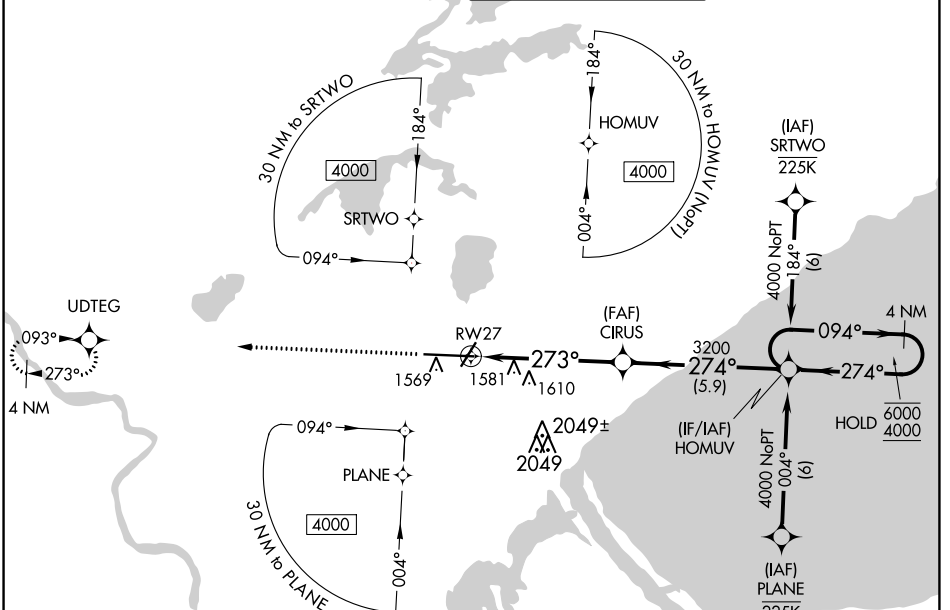


WAAS CH <b>50502</b> <b>W27A</b>	APP CRS <b>273°</b>	Rwy ldg <b>10062</b> TDZE <b>1421</b> Apt Elev <b>1428</b>
--	------------------------	--

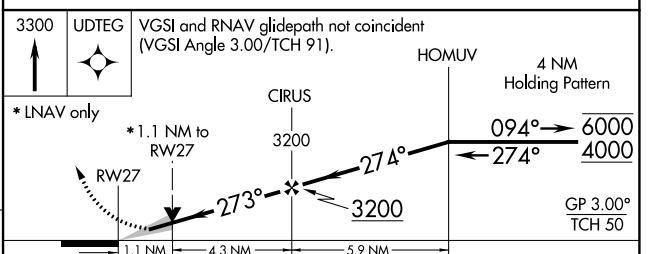
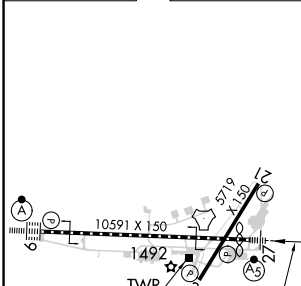
# RNAV (GPS) RWY 27

DULUTH INTL (DLH)

RNP APCH.		MALSR	MISSED APPROACH: Climb to 3300 direct UDEG and hold.
<p><b>▼</b> For uncompensated Baro-VNAV systems, LNAV/VNAV NA below -21°C or above 54°C.</p> <p><b>▲</b> #RVR 1800 authorized with use of FD or AP or HUD to DA.</p>			
ATIS <b>124.1 270.1</b>	DULUTH APP CON <b>125.45 233.7</b>	DULUTH TOWER <b>118.3 257.8</b>	GND CON <b>121.9 348.6</b>



ELEV 1428	<b>D</b> TDZE 1421
-----------	--------------------



CATEGORY	A	B	C	D
LPV DA#	1621/24		200 (200-½)	
LNAV/VNAV DA	1871/45		450 (500-¾)	
LNAV MDA	1860/24 439 (500-½)		1860/40 439 (500-¾)	
<b>C</b> CIRCLING	1880-1 452 (500-1)	1900-1 472 (500-1)	1940-1½ 512 (600-1½)	2400-3 972 (1000-3)

TDZ/CL Rwy 9  
REIL Rws 3 and 21  
HIRL Rws 3-21 and 9-27

NC-1, 16 JUN 2022 to 14 JUL 2022

NC-1, 16 JUN 2022 to 14 JUL 2022