

DAYTON, OHIO

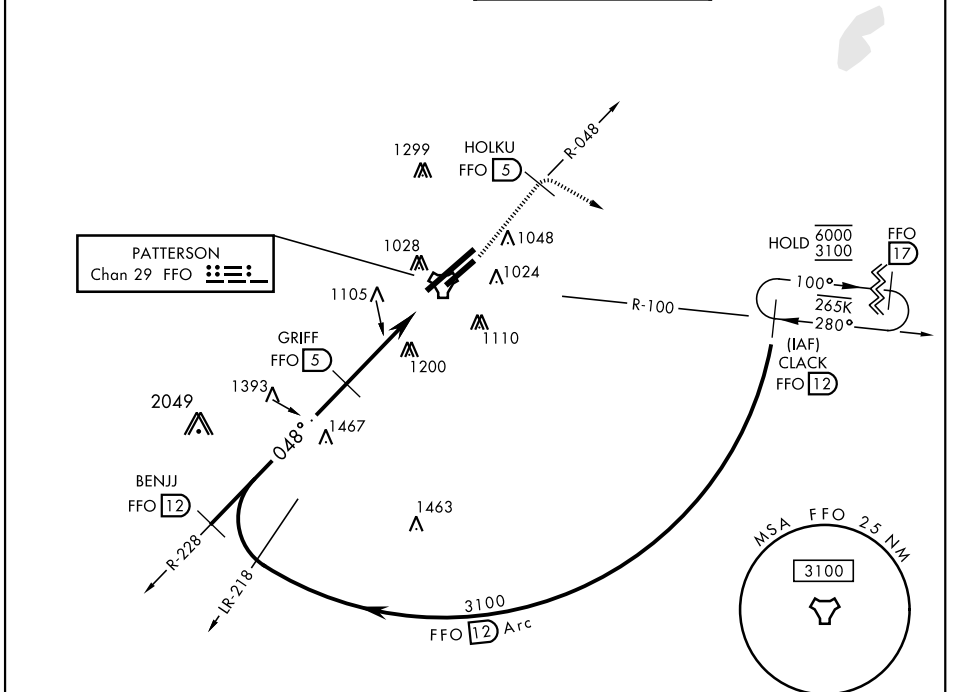
TACAN RWY 5R

TACAN FFO Chan 29	APCH CRS 048°	Rwy Ldg THRE Arprt Elev 7000 807 823	AL-108 [USAF]	WRIGHT-PATTERSON AFB (KFFO)
-----------------------------	-------------------------	---	---------------	-----------------------------

▼ * When Rwy 23R VGSi inop, circling to Rwy 23R NA at night.

MISSED APPROACH: Climb to 2000 via FFO R-048 to HOLKU, turn right direct CLACK climbing to 3100 and hold.

ATIS 124.475 269.9	COLUMBUS APP CON 118.85 269.275	PATTERSON TOWER 126.9 281.45	GND CON 121.8 335.8
------------------------------	---	--	-------------------------------



EC-2, 16 JUN 2022 to 14 JUL 2022

EC-2, 16 JUN 2022 to 14 JUL 2022

EMERG SAFE ALT 100 NM 3700

2000 FFO R-048	HOLKU FFO 5	3100 CLACK FFO 12	ELEV 823	THRE 807	
CATEGORY	A	B	C	D	E
S-5R	1500-1	687 (700-1)	1500-2	687 (700-2)	
CIRCLING*	1500-1	677 (700-1)	1560-2 737 (800-2)	1620-2½ 797 (800-2½)	1620-2¾ 797 (800-2¾)
			HIRL Rwy 5L-23R MIRL Rwy 5R-23L		

DAYTON, OHIO
Amdt 5 05JAN17

39° 50' N-84° 03' W

WRIGHT-PATTERSON AFB (KFFO)

TACAN RWY 5R