

DAYTON, OHIO

TACAN RWY 5L

TACAN FFO Chan 29	APCH CRS 059°	Rwy Idg 12,600 TDZE 803 Arprt Elev 823	AL-108 [USAF]	WRIGHT-PATTERSON AFB (KFFO)
--------------------------	----------------------	---	---------------	-----------------------------

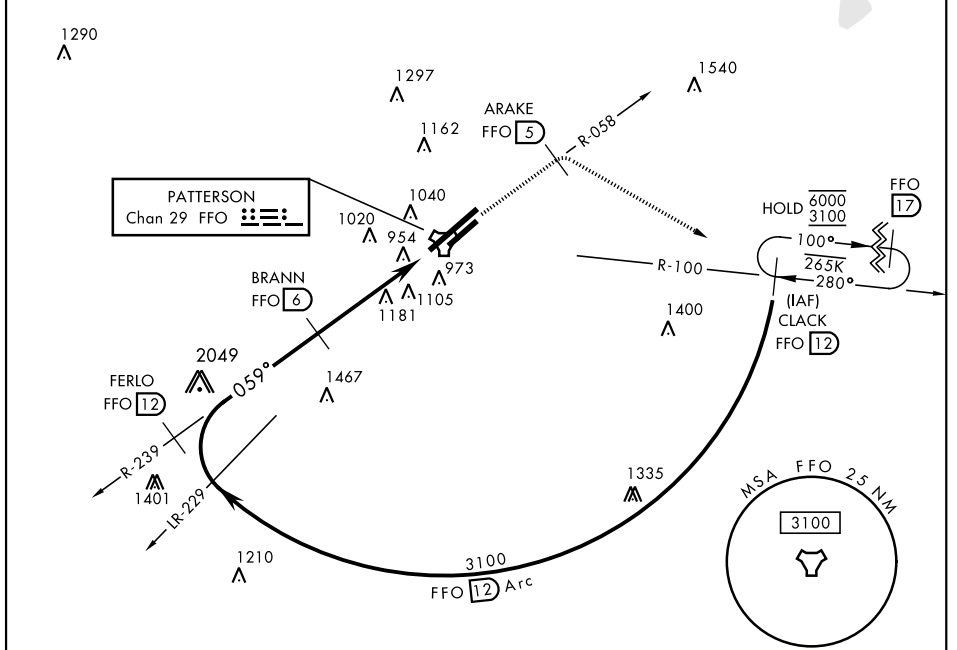
▼ * When ALS inop, increase RVR CAT AB to 55 and vis to 1 mile, CAT CDE vis to 1¾ miles.
 ** When Rwy 23R VGSI inop, circling to Rwy 23R NA at night.

 ALSF-1

 † MISSED APPROACH: Climb to 2000 via FFO R-058 to 5 DME, turn right direct CLACK climbing to 3100 and hold.

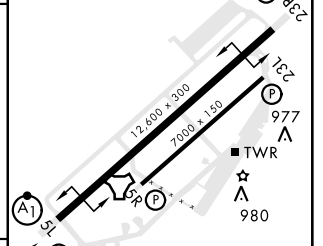
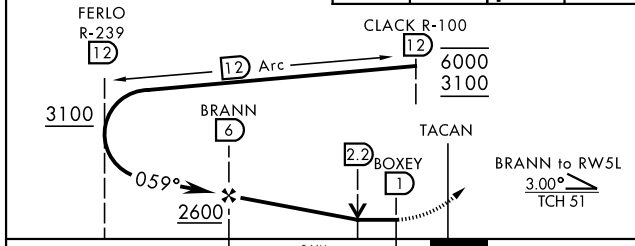
ATIS 124.475 269.9	COLUMBUS APP CON 118.85 269.275	PATTERSON TOWER 126.9 281.45	GND CON 121.8 335.8
------------------------------	---	--	-------------------------------

† Missed approach requires use of RNAV or ATC radar monitoring.



EMERG SAFE ALT 100 NM 3700

2000 ↑ FFO R-058	ARAKE FFO 5	3100 ↙ CLACK FFO 12	ELEV 823 TDZE 803
---------------------	-------------	------------------------	------------------------



CATEGORY	A	B	C	D	E
S-5L *	1400/24	597 (600-½)	1400-1¼	597 (600-1¼)	
CIRCLING **	1400-1 577 (600-1)	1440-1 617 (700-1)	1560-2 737 (800-2)	1620-2½ 797 (800-2½)	1620-2¾ 797 (800-2¾)

HIRL Rwy 5L-23R
 MIRL Rwy 5R-23L

TACAN RWY 5L

EC-2, 16 JUN 2022 to 14 JUL 2022

EC-2, 16 JUN 2022 to 14 JUL 2022