

DAYTON, OHIO

TACAN RWY 23R

WRIGHT-PATTERSON AFB (KFFO)

TACAN FFO Chan 29	APCH CRS 230°	Rwy Ildg THRE 12,600 823 Arprt Elev 823
--------------------------	----------------------	---

AL-108 [USAF]

▼ * When ALS inop, increase CAT AB RVR to 55 and vis to 1 mile, CAT CDE vis to 1½ miles.

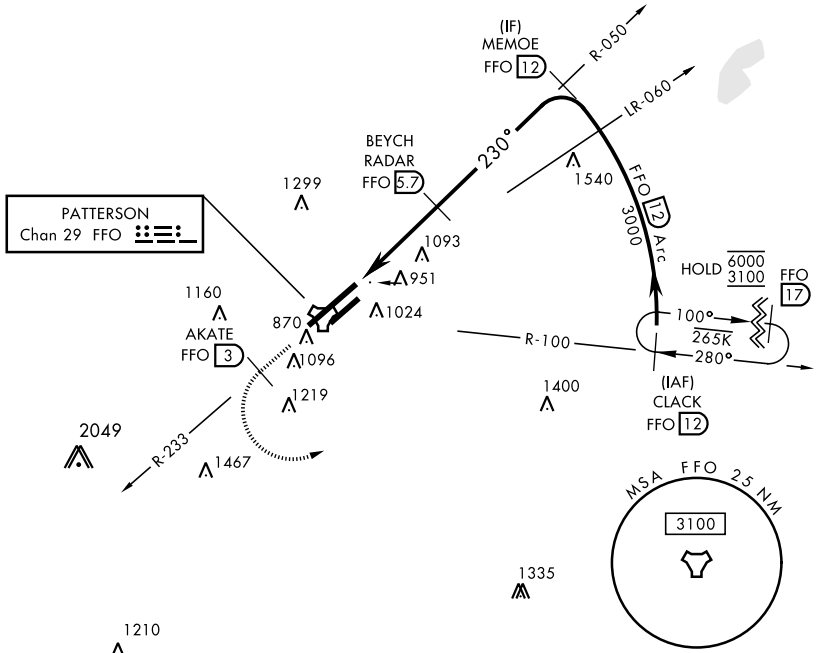
ALSF-1

† MISSED APPROACH: Climb to 2000 via FFO R-233, at 3 DME turn left direct CLACK climbing to 3000 and hold.

ATIS 124.475 269.9	COLUMBUS APP CON 118.85 269.275	PATTERSON TOWER 126.9 281.45	GND CON 121.8 335.8
------------------------------	---	--	-------------------------------

** When Rwy 23R VGSI inop, circling to Rwy 23R NA at night.

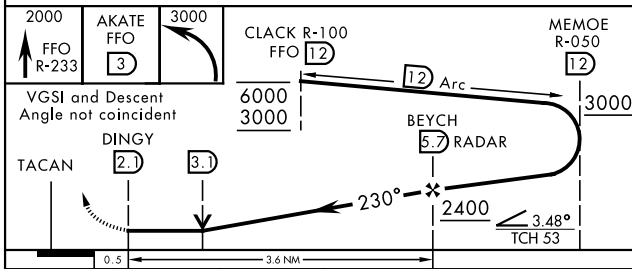
† Missed approach requires use of RNAV or ATC radar monitoring.



EC-2, 16 JUN 2022 to 14 JUL 2022

EC-2, 16 JUN 2022 to 14 JUL 2022

EMERG SAFE ALT 100 NM 3700



ELEV 823	THRE 823
----------	----------

2000 FFO R-233	AKATE FFO 3	3000
TACAN	DINGY 2.1	3.1
CLACK R-100 FFO 12	BEYCH RADAR 5.7	MEMOE R-050 FFO 12
6000	3000	3000
12,600 x 300	7000 x 1.5	977
980		

CATEGORY	A	B	C	D	E
S-23R *	1360/24 537 (600-½)		1360/55	537	(600-1)
CIRCLING **	1380-1 557 (600-1)	1440-1 617 (700-1)	1560-2 737 (800-2)	1620-2½ 797 (800-2½)	1620-2¾ 797 (800-2¾)

HRL Rwy 5L-23R
MIRL Rwy 5R-23L

DAYTON, OHIO
Amdt 6 30APR15

39° 50'N-84° 03'W

WRIGHT-PATTERSON AFB (KFFO)

TACAN RWY 23R