

DAYTON, OHIO

# RNAV (GPS) RWY 5R

19171

APCH CRS	Rwy Idg	7000
053°	TDZE	813
	Arprt Elev	823

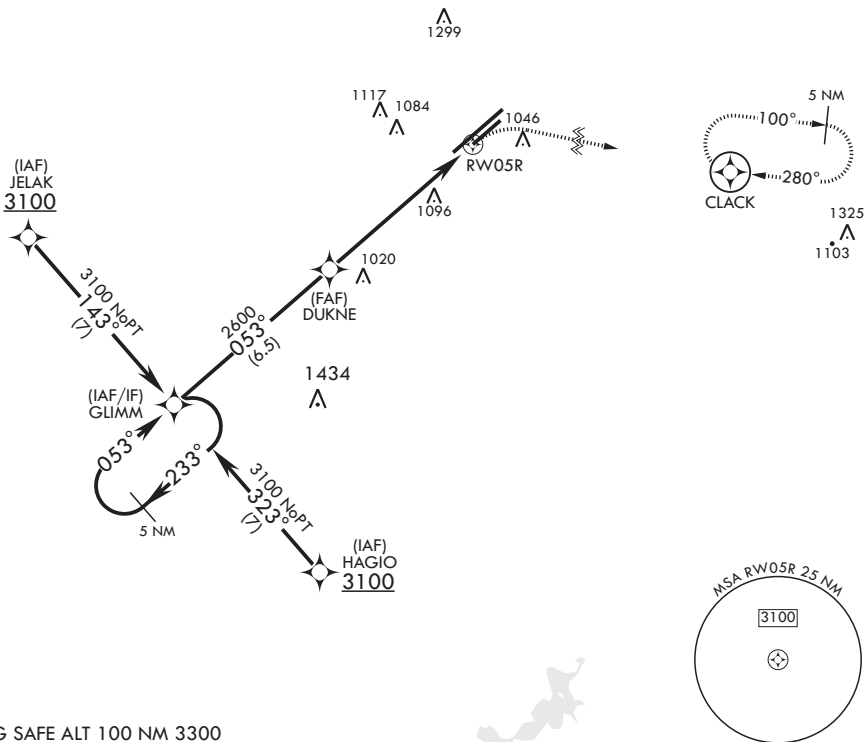
AL-108 (USAF)

WRIGHT PATTERSON AFB (KFFO)

**▼** \* When Rwy 23R VGSIs inop, circling to Rwy 23R NA at night. MISSED APPROACH: Turn right climb to 3100 direct CLACK WPT and hold.

ATIS <b>124.475 269.9</b>	COLUMBUS APP CON/DEP CON <b>118.85 269.275</b>	PATTERSON TOWER <b>126.9 281.45</b>	GND CON <b>121.8 335.8</b>
------------------------------	---	--	-------------------------------

DME/DME RNP-0.3 NA



EMERG SAFE ALT 100 NM 3300

	<p>3100 CLACK ELEV 823 TDZE 813</p>															
<p>VGSI and descent angles not coincident. (VGSI Angle 3.00° TCH 51)</p>																
<p>3100 ← 233° GLIMM</p> <p>← 053° →</p> <p>2600 DUKNE</p> <p>1.6 NM to RW05R</p> <p>6 NM</p>	<p>053° to RW05R</p>															
<p>2.74° ≥ TCH 51</p>	<p>MIRL Rwy 5R-23L HIRL Rwy 5L-23R</p>															
<table border="1"> <thead> <tr> <th>CATEGORY</th> <th>A</th> <th>B</th> <th>C</th> <th>D</th> </tr> </thead> <tbody> <tr> <td>LNAV MDA</td> <td>1380-1</td> <td>567 (600-1)</td> <td>1380-1 5/8</td> <td>567 (600-1 5/8)</td> </tr> <tr> <td>CIRCLING*</td> <td>1380-1 557 (600-1)</td> <td>1440-1 617 (700-1)</td> <td>1560-2 737 (800-2)</td> <td>1620-2 1/2 797 (800-2 1/2)</td> </tr> </tbody> </table>	CATEGORY	A	B	C	D	LNAV MDA	1380-1	567 (600-1)	1380-1 5/8	567 (600-1 5/8)	CIRCLING*	1380-1 557 (600-1)	1440-1 617 (700-1)	1560-2 737 (800-2)	1620-2 1/2 797 (800-2 1/2)	
CATEGORY	A	B	C	D												
LNAV MDA	1380-1	567 (600-1)	1380-1 5/8	567 (600-1 5/8)												
CIRCLING*	1380-1 557 (600-1)	1440-1 617 (700-1)	1560-2 737 (800-2)	1620-2 1/2 797 (800-2 1/2)												

DAYTON, OHIO

39°50'N - 84°03'W

WRIGHT PATTERSON AFB (KFFO)

Amdt 4 13OCT16

# RNAV (GPS) RWY 5R

EC-2, 16 JUN 2022 to 14 JUL 2022

EC-2, 16 JUN 2022 to 14 JUL 2022