


RNAV (GPS) RWY 5L

APCH CRS	Rwy Idg	12,600
053°	TDZE	803
	Arpt Elev	823

AL-108 (USAF)

WRIGHT PATTERSON AFB (KFFO)

▼ * When ALS inop increase CAT AB RVR to 55, vis to 1 mile; CAT CD vis to 1 5/8 miles.
 ** When Rwy 23R VGSI inop, circling to Rwy 23R NA at night.

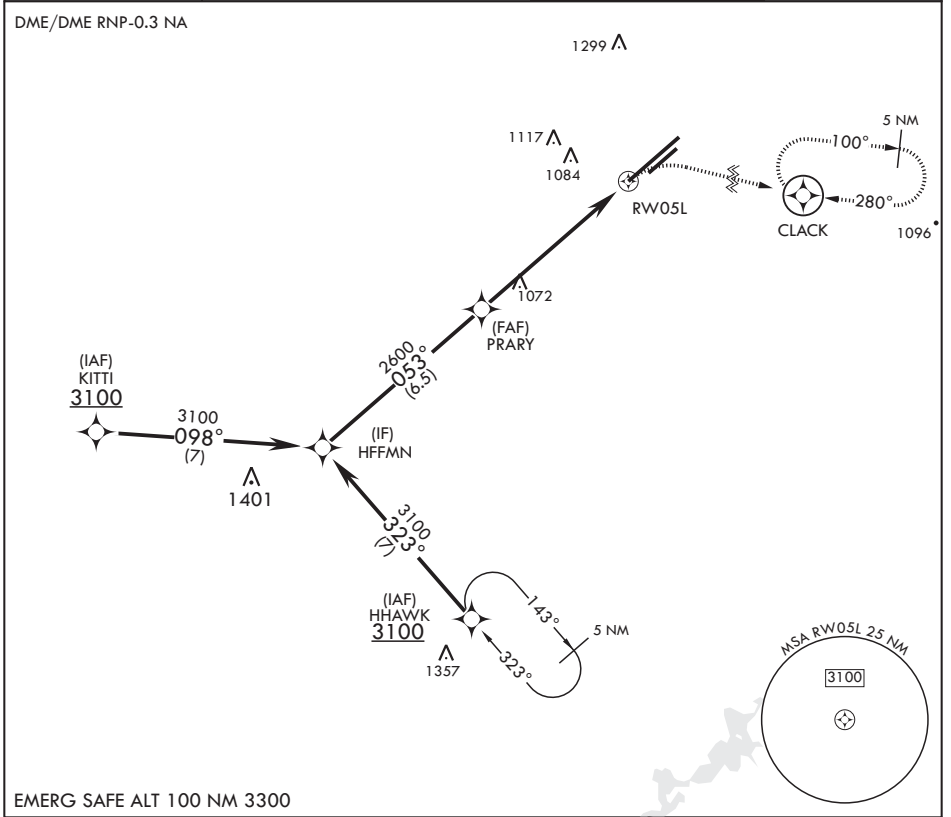
ALSF-1
 MISSED APPROACH: Turn right climb to 3100 direct CLACK WPT and hold.

ATIS
124.475 269.9

COLUMBUS APP CON/DEP CON
118.85 269.275

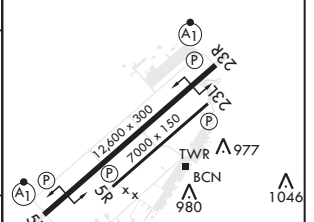
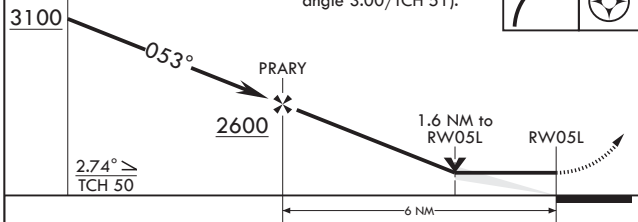
PATTERSON TOWER
126.9 281.45

GND CON
121.8 335.8



EMERG SAFE ALT 100 NM 3300

3100	CLACK	ELEV 823	TDZE 803
------	-------	----------	----------



CATEGORY	A	B	C	D
LNAV MDA*	1380/24	577 (600-1/2)	1380-1 1/4	577 (600-1/4)
C CIRCLING**	1380-1 557 (600-1)	1440-1 617 (700-1)	1560-2 737 (800-2)	1620-2 1/2 797 (800-2 1/2)

MIRL Rwy 5R-23L
 HIRL Rwy 5L-23R

RNAV (GPS) RWY 5L

EC-2, 16 JUN 2022 to 14 JUL 2022

EC-2, 16 JUN 2022 to 14 JUL 2022