

DAYTON, OHIO

RNAV (GPS) RWY 23R


19171

APCH CRS	Rwy Idg	12,600
233°	TDZE	823
	Arpt Elev	823

AL-108 (USAF)

WRIGHT PATTERSON AFB (KFFO)

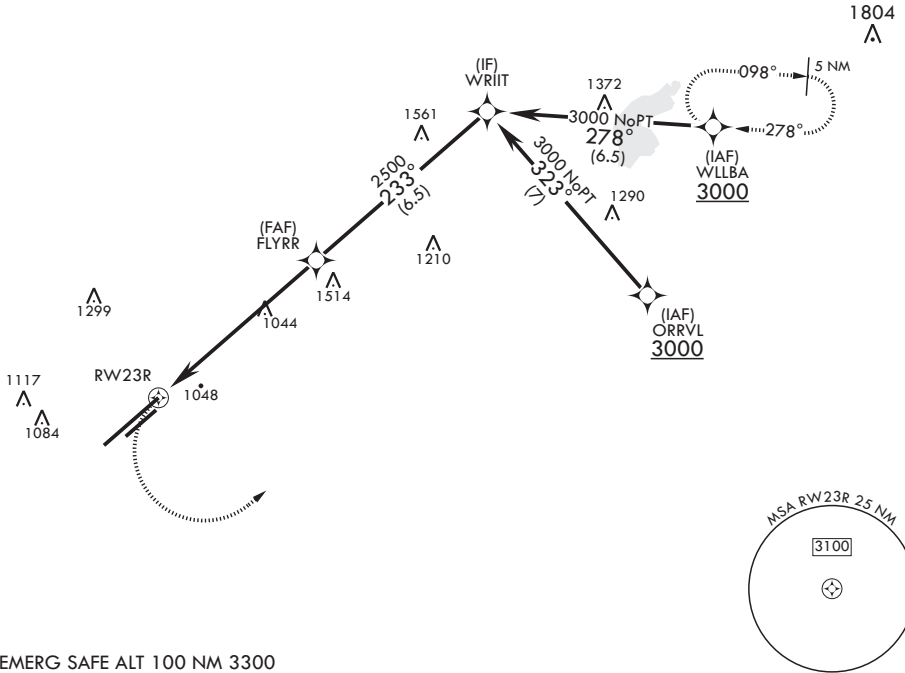
▼ * When ALS inop, increase CAT AB RVR to 55, vis to 1 mile; CAT CD vis to 1 3/8 miles.
 ** When Rwy 23R VGSI inop, circling to Rwy 23R NA at night.

ALS-F-1
 MISSED APPROACH: Turn left climb to 3000 direct WLLBA waypoint and hold.

ATIS 124.475 269.9	COLUMBUS APP CON/DEP CON 118.85 269.275	PATTERSON TOWER 126.9 281.45	GND CON 121.8 335.8
------------------------------	---	--	-------------------------------

DME/DME RNP-0.3 NA



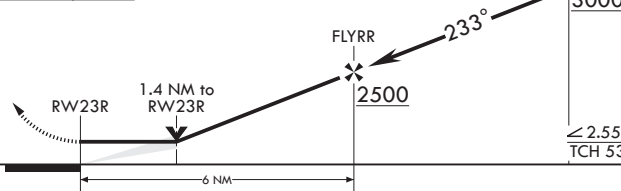
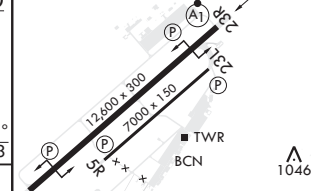
1323



EC-2, 16 JUN 2022 to 14 JUL 2022

EC-2, 16 JUN 2022 to 14 JUL 2022

EMERG SAFE ALT 100 NM 3300

		VGSI and descent angles not coincident. (VGSI angle 3.00 TCH 53)	ELEV 823	TDZE 823
				
CATEGORY	A	B	C	D
RNAV MDA*	1320/24	497 (500-1/2)	1320/50	497 (500-1)
CIRCLING**	1380-1 557 (600-1)	1440-1 617 (700-1)	1560-2 737 (800-2)	1620-2 1/2 797 (800-2 1/2)

DAYTON, OHIO
 Amdt 5 13OCT16

39°50'N - 84°03'W

WRIGHT PATTERSON AFB (KFFO)

RNAV (GPS) RWY 23R

MIRL Rwy 5R-23L
 HIRL Rwy 5L-23R