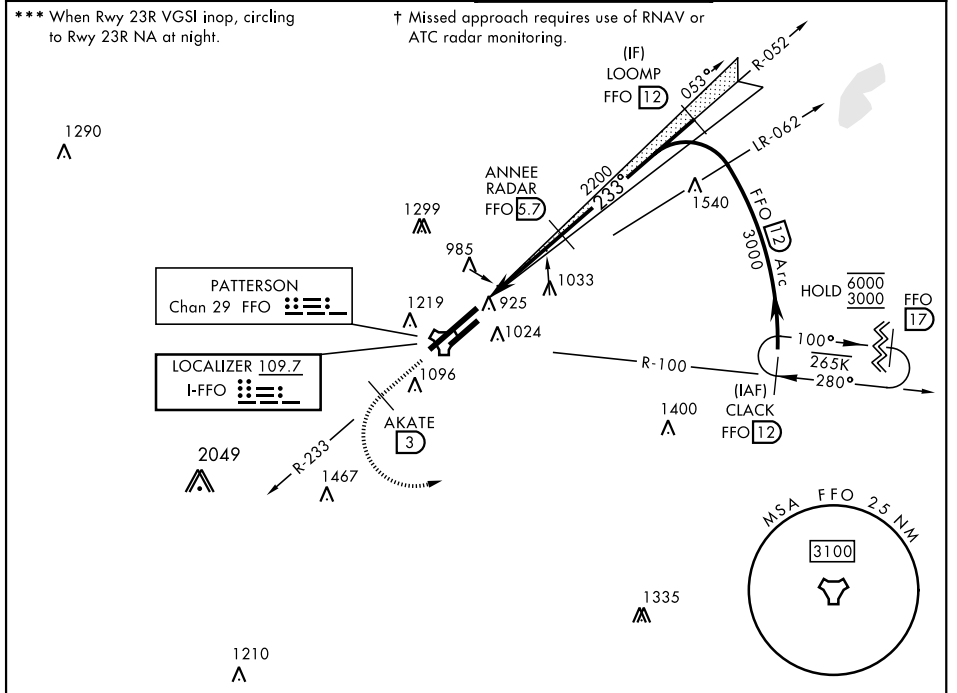


# ILS or LOC RWY 23R

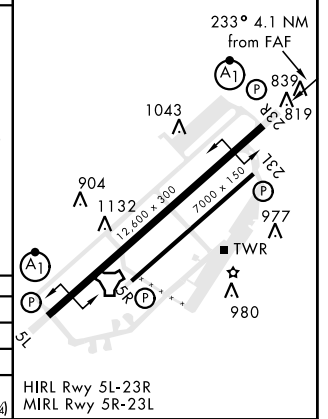
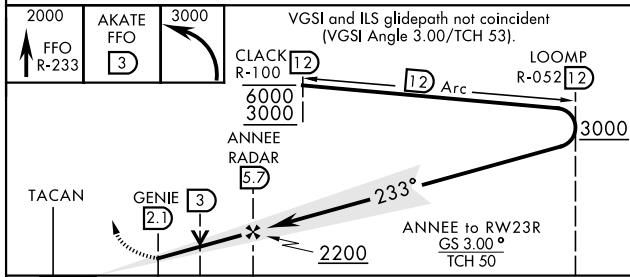
LOC I-FFO <b>109.7</b>	APCH CRS <b>233°</b>	Rwy Idg <b>12,600</b> THRE <b>823</b> Arprt Elev <b>823</b>	AL-108 [USAF]	WRIGHT-PATTERSON AFB (KFFO)
---------------------------	-------------------------	---	---------------	-----------------------------

<p>DME or RADAR required for Localizer.</p> <p>▼ *When ALS inop, increase RVR to 40 and vis to ¼ mile. **When ALS inop, increase CAT AB RVR to 55 and vis to 1 mile, CAT CDE vis to 1⅓ miles.</p>	ALS F-1 <b>(A1)</b>	<p>† MISSED APPROACH: Climb via FFO R-233 to 2000, at 3 DME turn left direct CLACK to 3000 and hold.</p>
---	------------------------	--

ATIS <b>124.475 269.9</b>	COLUMBUS APP CON <b>118.85 269.275</b>	PATTERSON TOWER <b>126.9 281.45</b>	GND CON <b>121.8 335.8</b>
------------------------------	---	--	-------------------------------



EMERG SAFE ALT 100 NM 3700	ELEV 823	THRE 823
----------------------------	----------	----------



CATEGORY	A	B	C	D	E	HIRL Rwy 5L-23R MIRL Rwy 5R-23L
S-ILS 23R*	1023/24		200	(200-½)		
S-LOC 23R**	1320/24	497	1320/50		497 (500-1)	
CIRCLING***	1380-1 557 (600-1)	1440-1 617 (600-1)	1560-2 737 (800-2)	1620-2½ 797 (800-2½)	1620-2¾ 797 (800-2¾)	

# ILS or LOC RWY 23R

EC-2, 16 JUN 2022 to 14 JUL 2022

EC-2, 16 JUN 2022 to 14 JUL 2022