

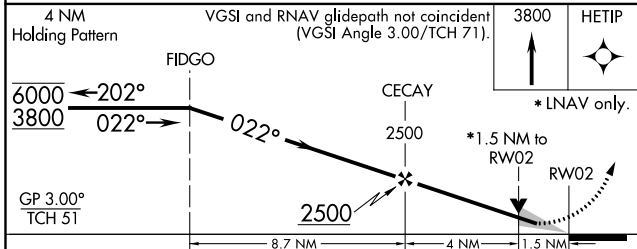
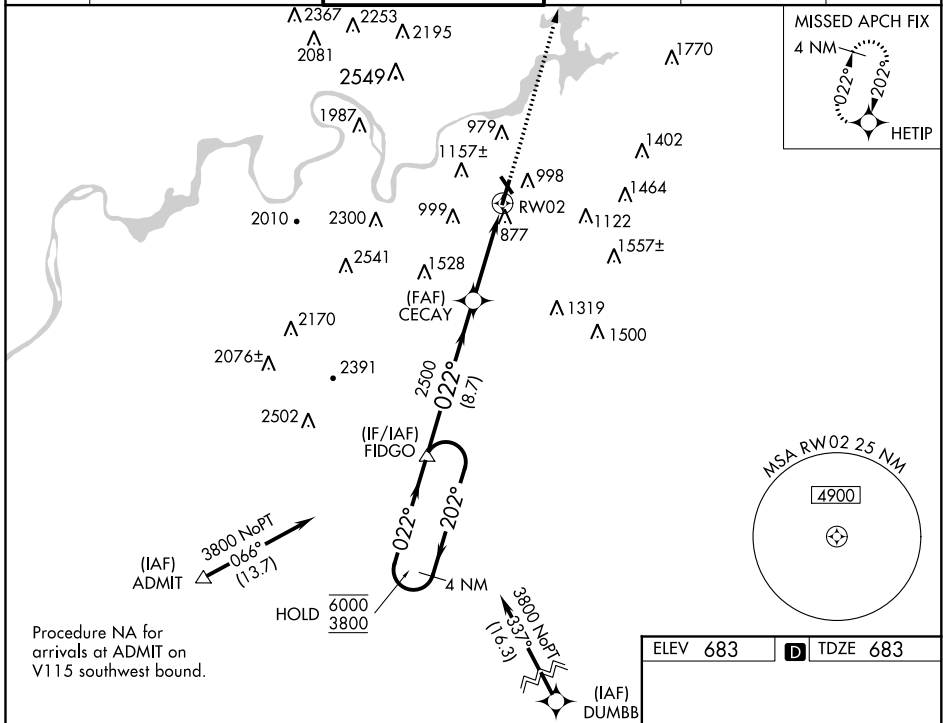
WAAS CH <b>65605</b> <b>W02A</b>	APP CRS <b>022°</b>	Rwy Idg TDZE Apt Elev	<b>7100</b> <b>683</b> <b>683</b>
--	------------------------	-----------------------------	---

# RNAV (GPS) RWY 2

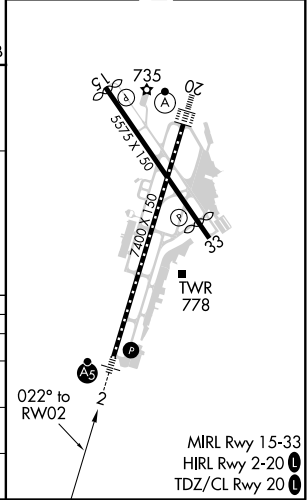
LOVELL FLD (CHA)

RNP APCH.		MALSR	MISSED APPROACH: Climb to 3800 direct HETIP and hold.
<p>▼ Circling Rwy 15, 33 NA at night. For uncompensated Baro-VNAV systems, LNAV/VNAV NA below -16°C or above 54°C. For inop ALS, increase LNAV/VNAV all Cats visibility to 1½ SM. **RVR 1800 authorized with use of FD or AP or HUD to DA.</p>			

ATIS <b>119.85</b>	CHATTANOOGA APP CON * <b>125.1 379.1</b>	CHATTANOOGA TOWER * <b>118.3 (CTAF) 257.8</b>	GND CON <b>121.7 348.6</b>	CLNC DEL <b>120.95 348.6</b>	UNICOM <b>122.95</b>
-----------------------	---	--	-------------------------------	---------------------------------	-------------------------



ELEV 683	D TDZE 683
----------	------------



CATEGORY	A	B	C	D
LPV DA**		883/24	200 (200-½)	
LNAV/VNAV DA		1197/60	514 (600-1¼)	
LNAV MDA	1200/24	517 (600-½)	1200/55 517 (600-1)	1200/60 517 (600-1¼)
CIRCLING	1300-1 617 (700-1)	1340-1 657 (700-1)	1480-2 ¼ 797 (800-2 ¼)	1580-3 897 (900-3)

SE-1, 16 JUN 2022 to 14 JUL 2022

SE-1, 16 JUN 2022 to 14 JUL 2022