

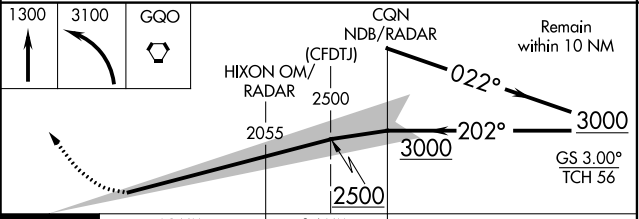
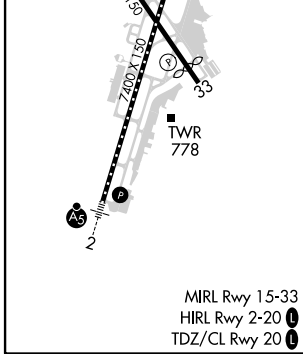
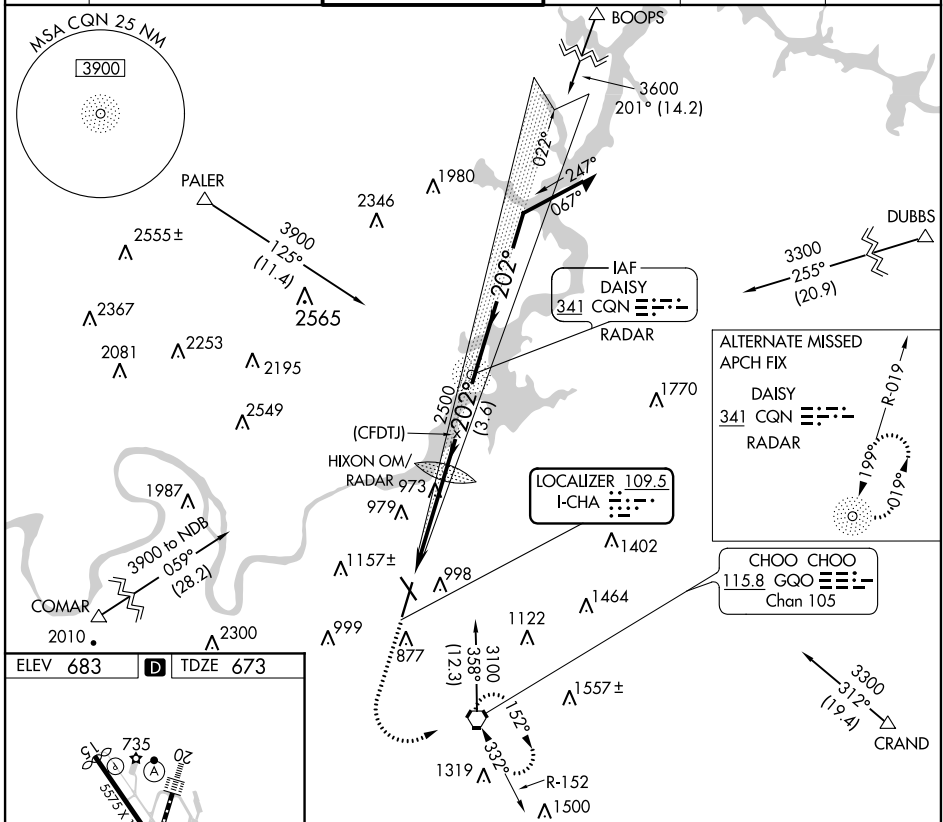
LOC I-CHA	APP CRS	Rwy Idg	<b>7400</b>
<b>109.5</b>	<b>202°</b>	TDZE	<b>673</b>
		Apt Elev	<b>683</b>

# ILS RWY 20 (CAT II)

LOVELL FLD (CHA)

ADF or RADAR required for procedure entry.	ALSF-2	MISSED APPROACH: Climb to 1300 then climbing left turn to 3100 direct GGO VORTAC and hold, continue climb-in-hold to 3100.
▼ When control tower closed, Cat II ILS NA. ▲ Disregard inner marker indication.		

ATIS	CHATTANOOGA APP CON *	CHATTANOOGA TOWER *	GND CON	CLNC DEL	UNICOM
<b>119.85</b>	<b>125.1 379.1</b>	<b>118.3 (CTAF) 0 257.8</b>	<b>121.7 348.6</b>	<b>120.95 348.6</b>	<b>122.95</b>



CATEGORY	A	B	C	D
S-ILS 20	RA 103/12 100 DA 773			

## CATEGORY II ILS - SPECIAL AIRCREW & AIRCRAFT CERTIFICATION REQUIRED

SE-1, 16 JUN 2022 to 14 JUL 2022

SE-1, 16 JUN 2022 to 14 JUL 2022