

# AIRPORT DIAGRAM

## CHARLOTTE/DOUGLAS INTL (CLT)

AL-78 (FAA)

CHARLOTTE, NORTH CAROLINA

D-ATIS ARR 121.15  
DEP 132.1

CHARLOTTE TOWER

118.1 257.8 (RWYS 18L-36R, 05-23)

126.4 257.8 (RWY 18C-36C)

133.35 257.8 (RWY 18R-36L)

GND CON

121.8 348.6 (WEST)

121.9 348.6 (EAST)

CLNC DEL

127.15 348.6

CPDLC

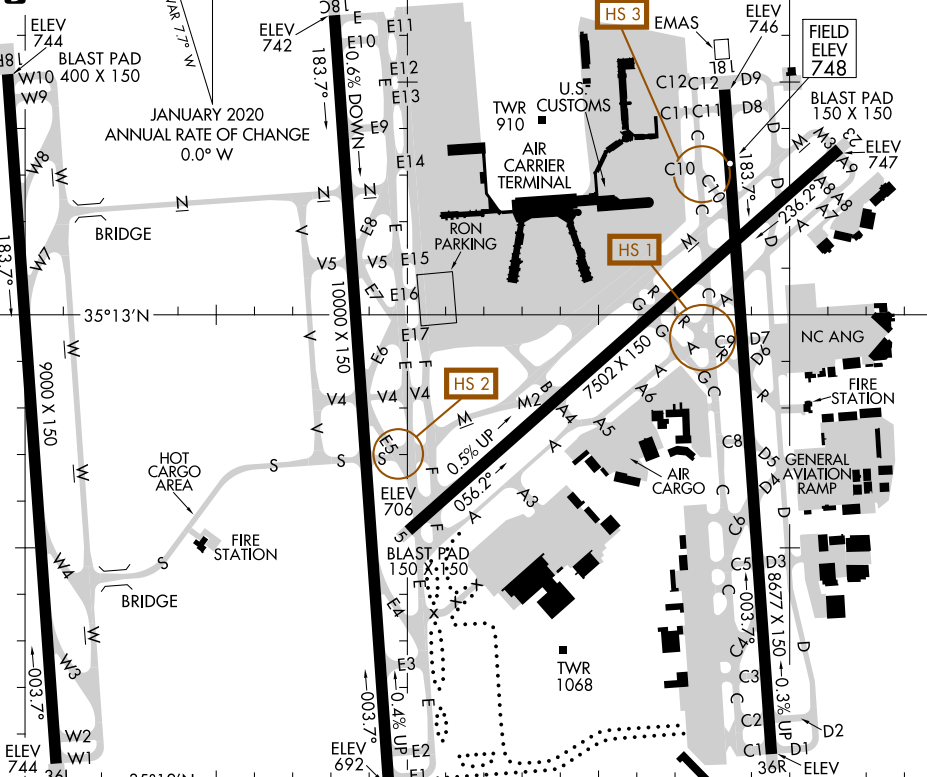
PDC

**D**

ASDE-X in use. Operate transponders with altitude reporting mode and ADS-B (if equipped) enabled on all airport surfaces.

Runway Status Lights in operation.

35°14'N



SE-2, 16 JUN 2022 to 14 JUL 2022

SE-2, 16 JUN 2022 to 14 JUL 2022

**CAUTION: BE ALERT TO RUNWAY CROSSING CLEARANCES.  
READBACK OF ALL RUNWAY HOLDING INSTRUCTIONS IS REQUIRED.**

RWY 05-23  
PCN 73 R/B/W/T  
S-93, D-170, 2D-350, 2D/2D2-650

RWY 18C-36C  
PCN 82 R/B/W/T  
S-93, D-200, 2D-350, 2D/2D2-650

RWY 18L-36R  
PCN 68 R/B/W/T  
S-93, D-200, 2D-350, 2D/2D2-650

RWY 18R-36L  
PCN 63 R/B/W/T  
S-93, D-200, 2D-350, 2D/2D2-650

80°58'W

80°57'W

80°56'W

# AIRPORT DIAGRAM

## CHARLOTTE, NORTH CAROLINA CHARLOTTE/DOUGLAS INTL (CLT)