

VOR/DME DDY 116.2 Chan 109	APP CRS 203°	Rwy Idg 10165 TDZE 5330 Apt Elev 5344
------------------------------------------------	------------------------	------------------------------------------------------------------

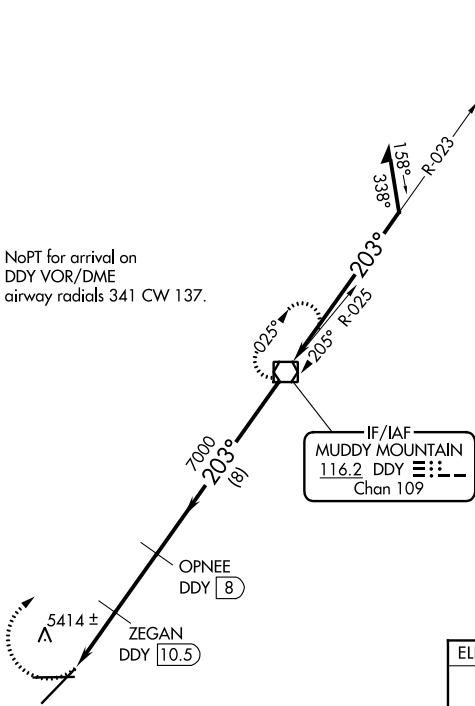
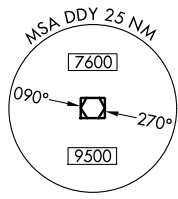
VOR/DME RWY 21

CASPER/NATRONA COUNTY INTL (CPR)

⚠ VDP NA with Douglas altimeter setting. When local altimeter setting not received, use Douglas altimeter setting and increase all MDAs 180 feet, increase S-21 visibility Cats C/D ½ SM, Circling Cat C ½ SM and Cat D ¼ SM.

⚠ MISSED APPROACH: Climbing right turn to 7600 direct DDY VOR/DME and hold.

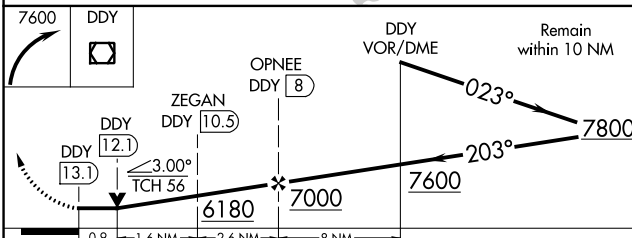
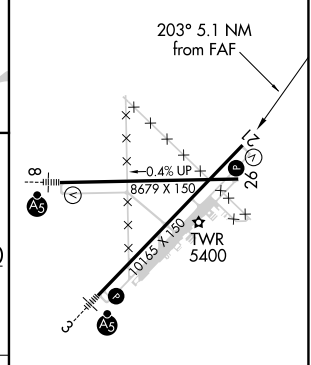
ATIS 126.15	CASPER APP CON * 120.65 354.1	CASPER TOWER * 118.3 (CTAF) 0 257.8	GND CON 121.9	CLNC DEL 121.9 257.8	UNICOM 122.95
-----------------------	-----------------------------------------	-----------------------------------------------	-------------------------	--------------------------------	-------------------------



NW-1, 16 JUN 2022 to 14 JUL 2022

NW-1, 16 JUN 2022 to 14 JUL 2022

ELEV 5344	D	TDZE 5330
-----------	----------	-----------



CATEGORY	A	B	C	D
S-21	5680-1 350 (400-1)			
CIRCLING	5740-1 396 (400-1)	5800-1 456 (500-1)	5860-1½ 516 (600-1½)	6200-2¾ 856 (900-2¾)

REIL Rwy 21 **0**
HIRL Rwy 3-21 and 8-26 **0**