

WAAS CH <b>63012</b> <b>W21A</b>	APP CRS <b>212°</b>	Rwy Idg TDZE <b>5330</b> Apt Elev <b>5344</b>
--	------------------------	---

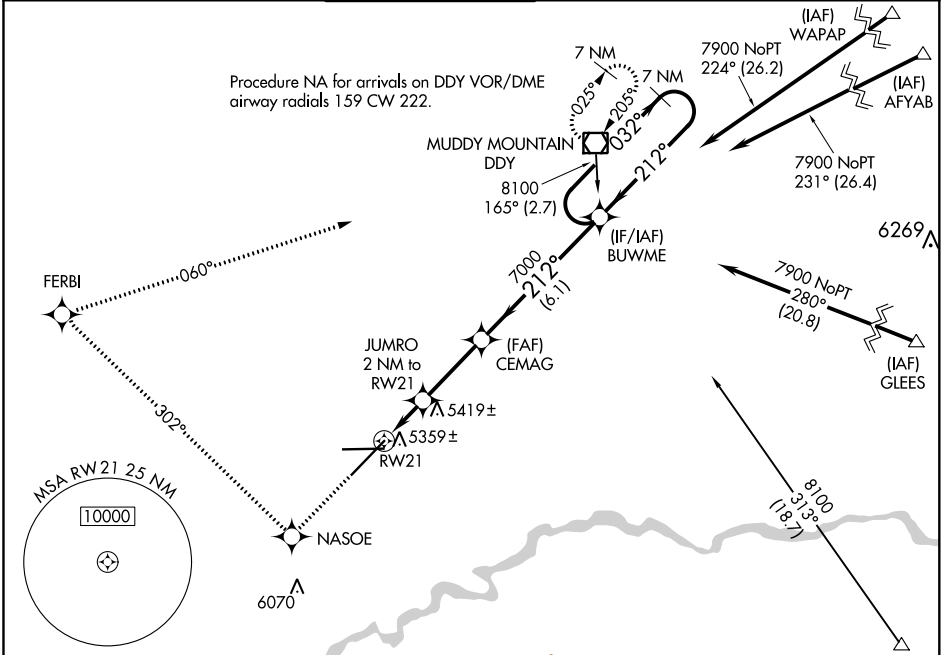
# RNAV (GPS) RWY 21

CASPER/NATRONA COUNTY INTL (CPR)

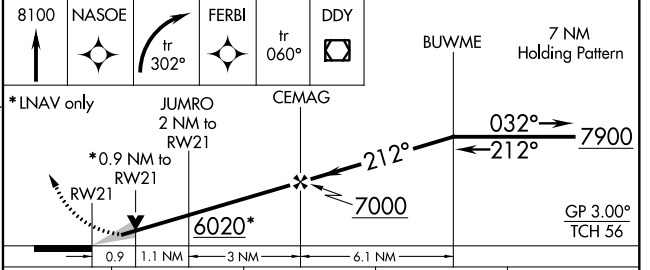
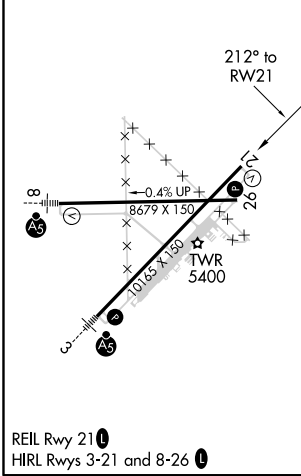
**⚠** For uncompensated Baro-VNAV systems, LNAV/VNAV NA below -25°C (-13°F) or above 38°C (100°F). DME/DME RNP-0.3 NA.

**⚠** MISSED APPROACH: Climb to 8100 direct NASOE and right turn via track 302° to FERBI and via track 060° to DDY VOR/DME and hold.

ATIS <b>126.15</b>	CASPER APP CON * <b>120.65 354.1</b>	CASPER TOWER * <b>118.3 (CTAF) 0 257.8</b>	GND CON <b>121.9</b>	CLNC DEL <b>121.9 257.8</b>	UNICOM <b>122.95</b>
-----------------------	---	---	-------------------------	--------------------------------	-------------------------



ELEV 5344	<b>D</b>	TDZE 5330
-----------	----------	-----------



CATEGORY	A	B	C	D
LPV DA		5580-¾	250 (300-¾)	
LNAV/VNAV DA		5629-1	299 (300-1)	
LNAV MDA		5680-1	350 (400-1)	5680-1¼ 350 (400-1¼)
CIRCLING	5780-1 436 (500-1)	5800-1 456 (500-1)	5860-1½ 516 (600-1½)	6200-2¾ 856 (900-2¾)

NW-1, 16 JUN 2022 to 14 JUL 2022

NW-1, 16 JUN 2022 to 14 JUL 2022