

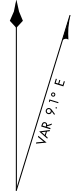
20086 **AIRPORT DIAGRAM** CASPER/NATRONA COUNTY INTL (CPR) CASPER, WYOMING

AL-72 (FAA)

CASPER, WYOMING

ATIS  
126.15  
CASPER TOWER\*  
118.3 257.8  
GND CON  
121.9  
CLNC DEL  
121.9 257.8

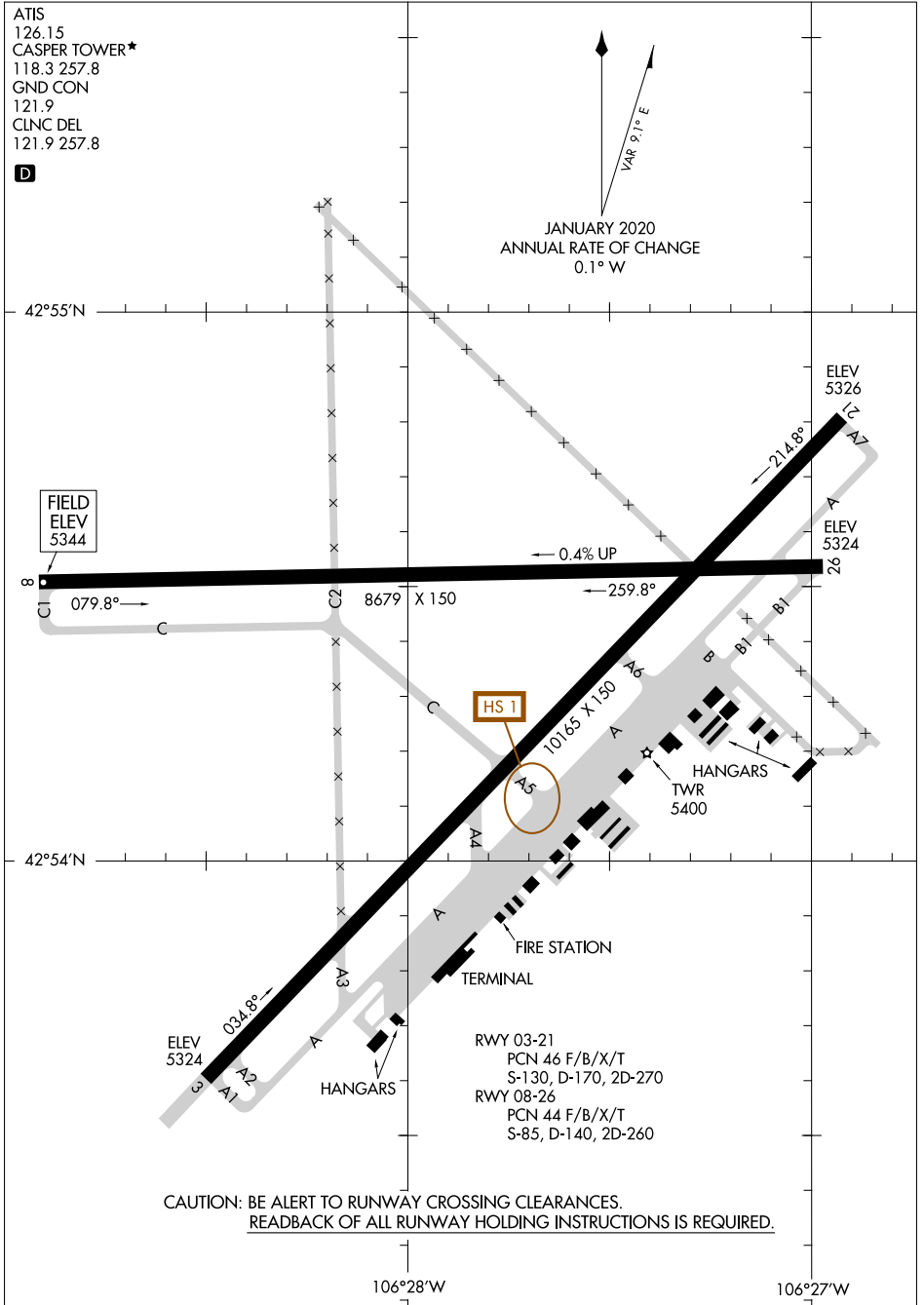
**D**



JANUARY 2020  
ANNUAL RATE OF CHANGE  
0.1° W

NW-1, 16 JUN 2022 to 14 JUL 2022

NW-1, 16 JUN 2022 to 14 JUL 2022



FIELD  
ELEV  
5344

079.8°

HS 1

A5

TWR  
5400

HANGARS

FIRE STATION

TERMINAL

HANGARS

RWY 03-21  
PCN 46 F/B/X/T  
S-130, D-170, 2D-270  
RWY 08-26  
PCN 44 F/B/X/T  
S-85, D-140, 2D-260

CAUTION: BE ALERT TO RUNWAY CROSSING CLEARANCES.  
READBACK OF ALL RUNWAY HOLDING INSTRUCTIONS IS REQUIRED.

106°28'W

106°27'W