

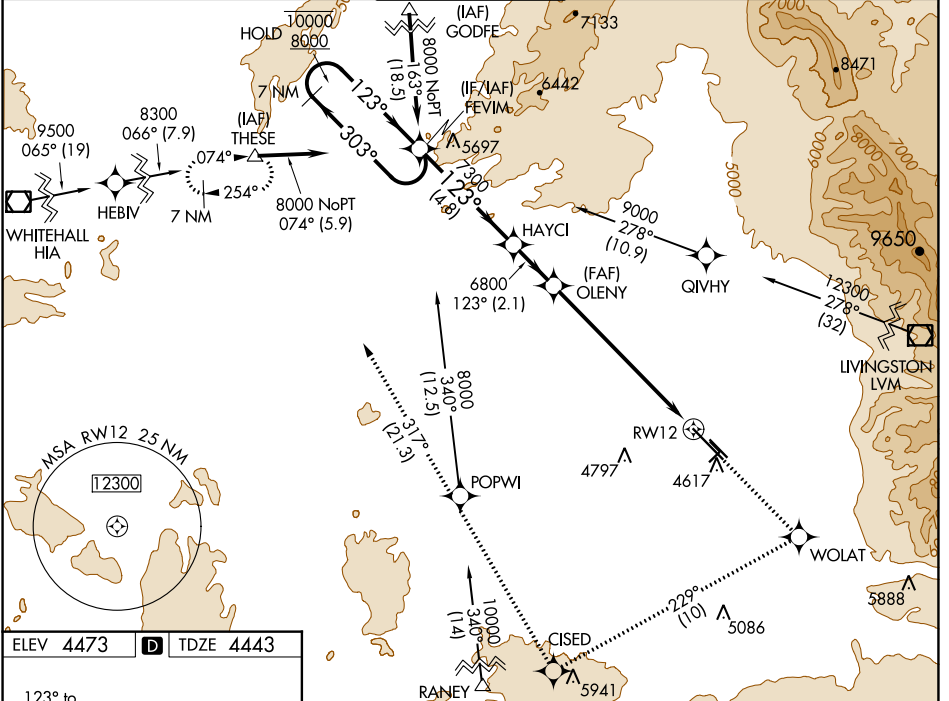
WAAS CH <b>72816</b> <b>W12A</b>	APP CRS <b>123°</b>	Rwy ldg TDZE Apt Elev	<b>8994</b> <b>4443</b> <b>4473</b>
--	------------------------	-----------------------------	---

# RNAV (GPS) Y RWY 12

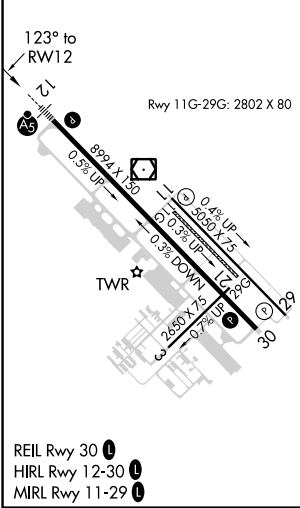
BOZEMAN YELLOWSTONE INTL (BZN)

RNP APCH.	MALSR	MISSED APPROACH: Climb to 8300 direct WOLAT and right turn on track 229° to CISED and on track 317° to THESE and hold.
<p>⚠ Circling NA to Rwys 3-21 and 11-29. For uncompensated Baro-VNAV systems, procedure NA below -23°C or above 49°C. For inop ALS, increase</p> <p>⚠ -31°C LNAV/VNAV visibility to 1 1/8 SM and LNAV visibility Cats C and D to 1 1/8 SM.</p>		

ATIS <b>135.425</b>	BIG SKY APP CON* <b>118.975 226.675</b>	BOZEMAN TOWER* <b>118.2 (CTAF) 0</b>	GND CON <b>121.8</b>	UNICOM <b>122.95</b>
------------------------	--	---	-------------------------	-------------------------



ELEV 4473	<b>D</b>	TDZE 4443
-----------	----------	-----------



7 NM Holding Pattern	FEVIM	8300	WOLAT	CISED	THESE
		↑	✧	tr 229°	tr 317°
10000 ← 303°	HAYCI	OLENY	* LNAV only		
8000 → 123°		6800	* 1.5 NM to RWY 12		
GP 3.00°		7300	RWY 12		
TCH 53		6800	RWY 12		
	4.8 NM	2.1 NM	5.7 NM	1.5-	

CATEGORY	A	B	C	D
LPV DA		4693-1/2	250 (300-1/2)	
LNAV/VNAV DA		5094-1 3/4	651 (700-1 3/4)	
LNAV MDA	4960-1/2	517 (500-1/2)	4960-1 517 (500-1)	4960-1 1/4 517 (500-1 1/4)
<b>C</b> CIRCLING	4960-1	487 (500-1)	5160-2 687 (700-2)	5360-3 887 (900-3)

NW-1, 16 JUN 2022 to 14 JUL 2022

NW-1, 16 JUN 2022 to 14 JUL 2022