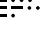



(BZN6.BZN) 18144

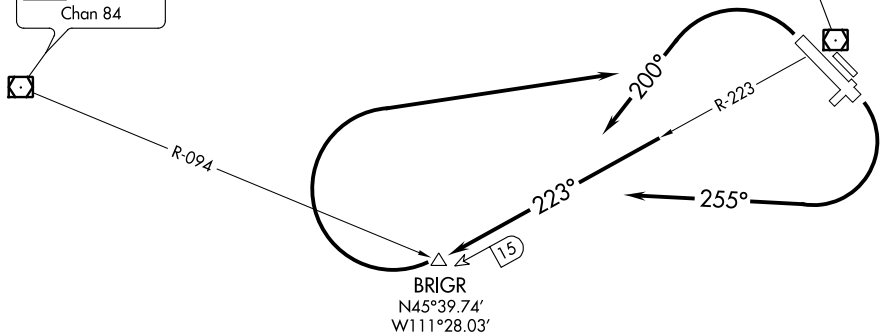
BOZEMAN SIX DEPARTURE (OBSTACLE)

BOZEMAN YELLOWSTONE INTL (BZN)
AL-59 (FAA) BOZEMAN, MONTANA

ATIS
135.425
GND CON
121.8
BOZEMAN TOWER ★
118.2 (CTAF)
BIG SKY DEP CON ★
118.975 226.675
GREAT FALLS RADIO
122.5

BOZEMAN
112.4 BZN 
Chan 71
N45°47.03'-W111°09.33'
L-13, H-1

WHITEHALL
113.7 HIA 
Chan 84



NW-1, 16 JUN 2022 to 14 JUL 2022

NW-1, 16 JUN 2022 to 14 JUL 2022

TAKEOFF MINIMUMS

Rwys 3, 11, 21, 29: NA - ATC.
Rwys 12, 30: Standard

TAKEOFF OBSTACLE NOTES

Rwy 30: Pole 641' from DER, 622' left of centerline, 35' AGL/4452' MSL.

NOTE: Chart not to scale.

DEPARTURE ROUTE DESCRIPTION

TAKEOFF RUNWAY 12: Climbing right turn heading 255° to intercept BZN R-223 to BRIGR, then continue climbing right turn direct BZN VOR/DME, cross BZN VOR/DME at or above MCA or MEA for route of flight.

TAKEOFF RUNWAY 30: Climbing left turn heading 200° to intercept BZN R-223 to BRIGR, then continue climbing right turn direct BZN VOR/DME, cross BZN VOR/DME at or above MCA or MEA for route of flight.

BOZEMAN SIX DEPARTURE (OBSTACLE)

(BZN6.BZN) 24MAY18

BOZEMAN, MONTANA
BOZEMAN YELLOWSTONE INTL (BZN)