

**BOBK FOUR DEPARTURE (RNAV)**

**TOP ALTITUDE:**  
16000

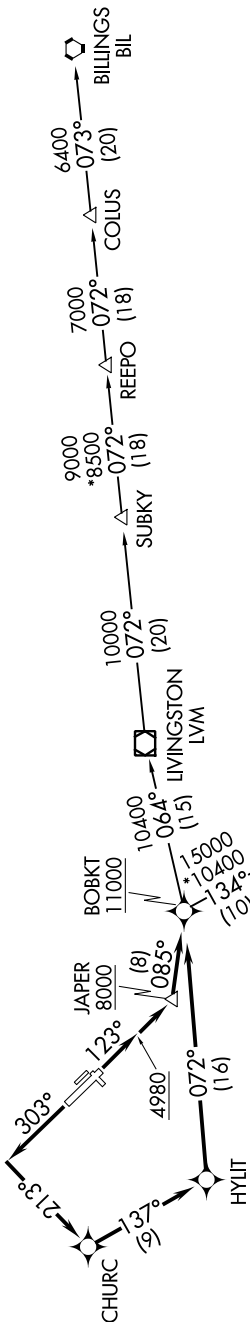
**TAKEOFF MINIMUMS**

Rvys 3, 11, 21, 29: NA - ATC.

Rvy 12: Standard with minimum climb of 395' per NM to 15000.

Rvy 30: Standard with minimum climb of 250' per NM to 15000.

ATIS 135.425  
GND CON 121.8  
BOZEMAN TOWER\* 118.2 (CTAF)  
BIG SKY DEP CON\* 118.975 226.675  
GREAT FALLS RADIO 122.5



**DEPARTURE ROUTE DESCRIPTION**

**TAKEOFF RUNWAY 12:** Climb heading 123° to 4980, then direct to cross JAPER at or above 8000, then on track 085° to cross BOBK at or above 11000. Thence. . . .

**TAKEOFF RUNWAY 30:** Climb heading 303° to intercept course 213° to CHURC, then on track 137° to HYLIT, then on track 072° to cross BOBK at or above 11000. Thence. . . .

. . . (transition) maintain 16000. Expect filed altitude 10 minutes after departure.

BILLINGS TRANSITION (BOBK4.BIL)  
BOYSEN RESERVOIR TRANSITION (BOBK4.BOY)

NOTE: RNAV-1  
NOTE: GPS required.  
NOTE: Chart not to scale.