

| | | | |
|--|------------------------|-----------------------------|---|
| WAAS CH 99418 W35A | APP CRS 355° | Rwy Idg TDZE Apt Elev | 8802 2563 2573 |
|--|------------------------|-----------------------------|---|

RNAV (GPS) RWY 35

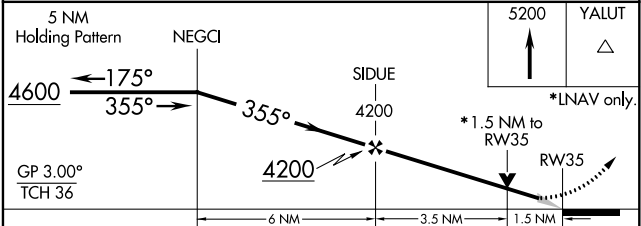
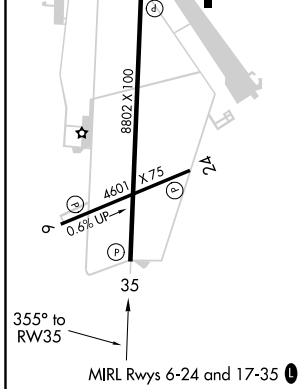
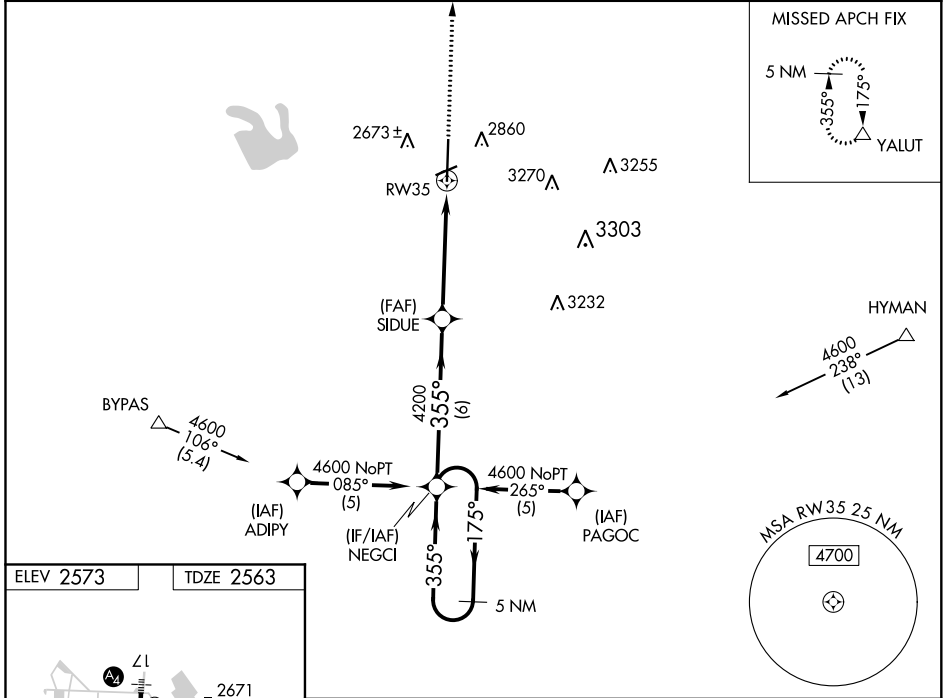
BIG SPRING McMAHON-WRINKLE (BPG)

RNP APCH.

⚠ Baro-VNAV NA when using Midland Intl Air and Space Port altimeter setting. For uncompensated Baro-VNAV systems, LNAV/VNAV NA below -20°C or above 43°C. VDP NA with Midland Intl Air and Space Port altimeter setting. When local altimeter setting not received, use Midland Intl Air and Space Port altimeter setting: increase all DA 130 feet and all MDA 140 feet; increase LPV all Cats visibility ¼ SM, LNAV/VNAV all Cats visibility ½ SM and LNAV Cat C and D visibility ½ SM.

MISSED APPROACH: Climb to 5200 direct YALUT and hold.

| | | |
|--------------------------|---|---------------------------------|
| AWOS-3 118.025 | FORT WORTH CENTER 133.7 350.2 | UNICOM 122.8 (CTAF) 0 |
|--------------------------|---|---------------------------------|



| CATEGORY | A | B | C | D |
|--------------|----------------------|----------------------|----------------------|----------------------|
| LPV DA | 2813-1 250 (300-1) | | | |
| LNAV/VNAV DA | 2979-1½ 416 (500-1½) | | | |
| LNAV MDA | 3060-1 497 (500-1) | 3060-1¼ 497 (500-1¼) | 3060-1½ 497 (500-1½) | 3060-1½ 497 (500-1½) |

SC-2, 16 JUN 2022 to 14 JUL 2022

SC-2, 16 JUN 2022 to 14 JUL 2022