

VORTAC CEC	APP CRS	Rwy Idg	5002
109.0	131°	TDZE	60
Chan 27		Apt Elev	61

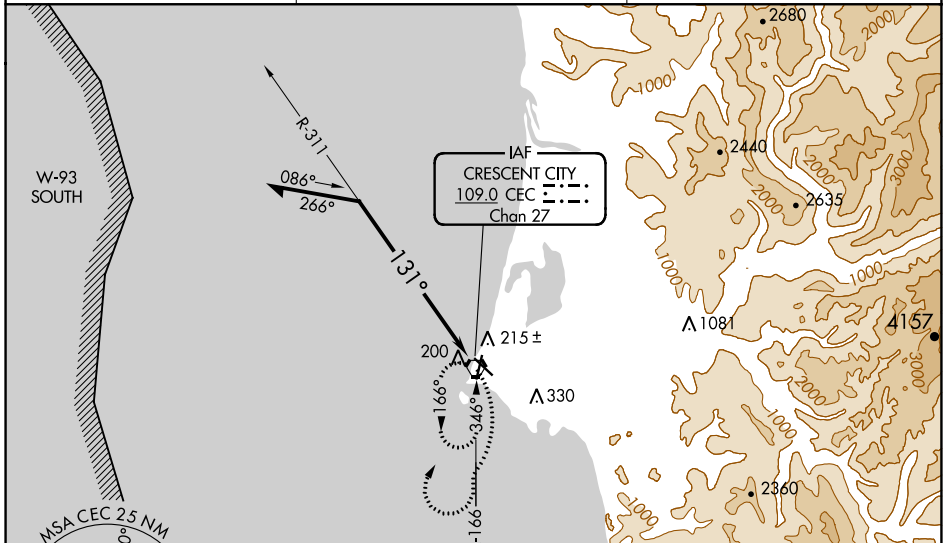
**VOR RWY 12**  
JACK MC NAMARA FLD (CEC)

⚠ When local altimeter setting not received, use Brookings altimeter setting and increase all MDA 100 feet; increase S-12 Cat C/D visibility  $\frac{3}{8}$  mile, Circling Cat D visibility  $\frac{1}{4}$  mile and Circling Cat C visibility  $\frac{1}{2}$  mile. For inop MALSAR increase S-12 Cat A/B visibility to 1 mile, and Cat C/D visibility to  $1\frac{1}{2}$  mile. For inop MALSAR when using Brookings altimeter setting, increase S-12 Cat A/B visibility to 1 mile, and Cat C/D visibility to  $1\frac{1}{2}$  mile. Night Landing: Rwy 36 operational VGSI required, remain on or above VGSI glidepath until threshold. Night Landing: Rwy 18, 30 NA.

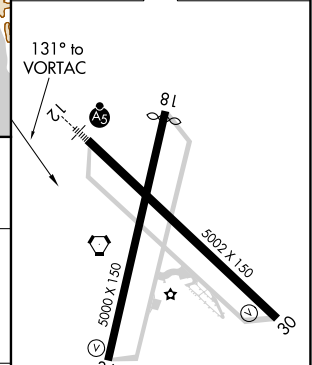


MISSED APPROACH: Climbing right turn to 3000 on CEC VORTAC R-166 then right turn direct CEC VORTAC and hold.

ASOS <b>119.925</b>	SEATTLE CENTER <b>124.85 306.3</b>	UNICOM <b>122.8 (CTAF)</b>
------------------------	---------------------------------------	-------------------------------



ELEV 61		TDZE 60
---------	--	---------



CATEGORY	A	B	C	D
	520- $\frac{3}{4}$	460 (500- $\frac{3}{4}$ )	520-1	460 (500-1)
CIRCLING	540-1	479 (500-1)	640-1 $\frac{1}{2}$ 579 (600-1 $\frac{1}{2}$ )	640-2 579 (600-2)

HIRL Rwy 12-30   
MIRL Rwy 18-36   
REIL Rws 18, 30 and 36

SW-2, 16 JUN 2022 to 14 JUL 2022

SW-2, 16 JUN 2022 to 14 JUL 2022