

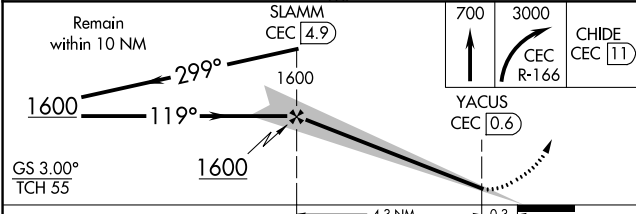
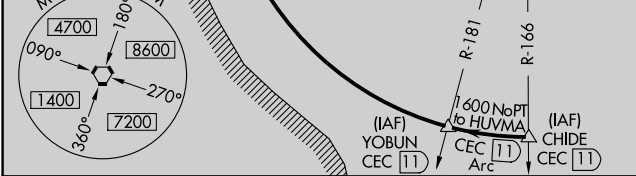
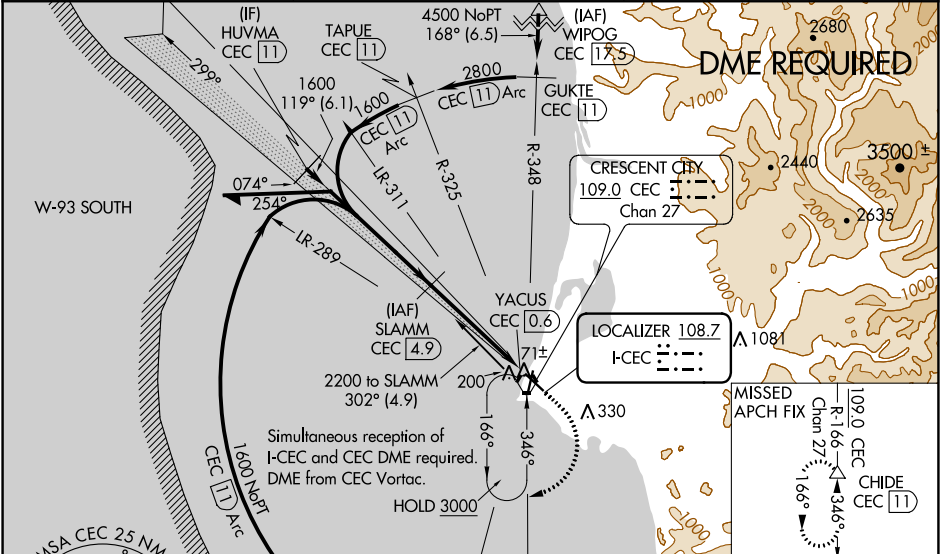
LOC I-CEC <b>108.7</b>	APP CRS <b>119°</b>	Rwy Idg TDZE Apt Elev	<b>5002</b> <b>60</b> <b>61</b>
---------------------------	------------------------	-----------------------------	---------------------------------------

**ILS or LOC RWY 12**  
JACK MC NAMARA FLD (CEC)

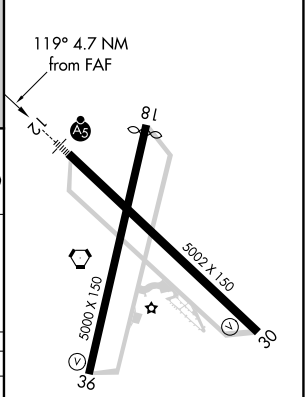
**NA** DME required. S-ILS 12: ½ mile visibility authorized with use of FD or AP or HUD to DA. Inop table does not apply to S-ILS 12, except with use of FD or AP or HUD to DA. For inop MALS, increase S-LOC 12 all Cats visibility ¼ mile. When local altimeter setting not received, use Brookings altimeter setting and increase DA to 407 feet and all MDA 100 feet; increase S-LOC 12 Cat C/D, and Circling Cat D visibilities ¼ mile. For inop MALS, when using Brookings altimeter setting, increase S-ILS 12 all Cats visibility to 1 mile. Night Landing: Rwy 36 operational VGSI required, remain on or above VGSI glidepath until threshold. Circling to Rwy 18, 30 NA at night.

**MALS**  
MISSED APPROACH:  
Climb to 700 then climbing right turn to 3000 on CEC VORTAC R-166 to CHIDE/CEC 11 DME and hold, continue climb-in-hold to 3000.

ASOS <b>119.925</b>	SEATTLE CENTER <b>124.85 306.3</b>	UNICOM <b>122.8 (CTAF)</b>
------------------------	---------------------------------------	-------------------------------



ELEV 61	<b>D</b>	TDZE 60
---------	----------	---------



CATEGORY	A	B	C	D
S-ILS 12		310-¾	250 (300-¾)	
S-LOC 12		380-¾	320 (400-¾)	
<b>C</b> CIRCLING	540-1	479 (500-1)	640-1½ 579 (600-1½)	640-2 579 (600-2)

HIRL Rwy 12-30  
REIL Rws 18, 30 and 36  
MIRL Rwy 18-36

SW-2, 16 JUN 2022 to 14 JUL 2022

SW-2, 16 JUN 2022 to 14 JUL 2022