

WHINZ FOUR ARRIVAL

D-ATIS ARR
119.65
ATLANTA APP CON
127.9 379.9

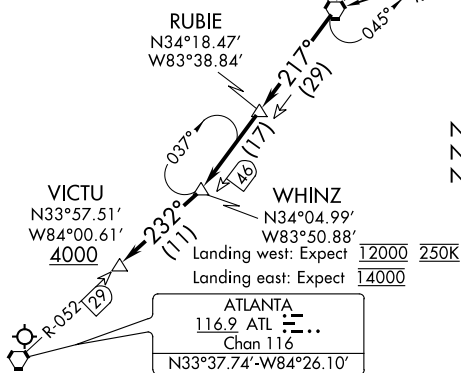
MONTEBELLO
115.3 MOL
Chan 100
N37°54.03'-W79°06.41'
L-26, H-10-12

VOLUNTEER
116.4 VVX
Chan 111

SNOWBIRD
108.8 SOT
Chan 25
N35°47.41'
W83°03.14'
L-25 H-9-12

FOOTHILLS
113.4 ODF
Chan 81
N34°41.75'-W83°17.86'

SPARTANBURG
115.7 SPA
Chan 104
N35°02.02'-W81°55.62'
L-24-25, H-9-12



NOTE: RADAR required.
 NOTE: Turbojet and turboprop aircraft only.
 NOTE: DME required.

NOTE: Chart not to scale.

ARRIVAL ROUTE DESCRIPTION

MONTEBELLO TRANSITION (MOL.WHINZ4): From over MOL VOR/DME on MOL R-233 to FLASK, then on MOL R-233 and ODF R-045 to AVERY, then on ODF R-045 to ODF VORTAC. Thence. . .

SNOWBIRD TRANSITION (SOT.WHINZ4): From over SOT VORTAC on SOT R-194 and ODF R-010 to ODF VORTAC. Thence. . .

SPARTANBURG TRANSITION (SPA.WHINZ4): From over SPA VORTAC on SPA R-256 and ODF R-073 to ODF VORTAC. Thence. . .

. . . from over ODF VORTAC on ODF R-217 to RUBIE and ODF R-217 to WHINZ, then on ATL R-052 to cross VICTU at or above 4000. Expect RADAR vectors to final approach course after VICTU.

SE-4, 16 JUN 2022 to 14 JUL 2022

SE-4, 16 JUN 2022 to 14 JUL 2022