

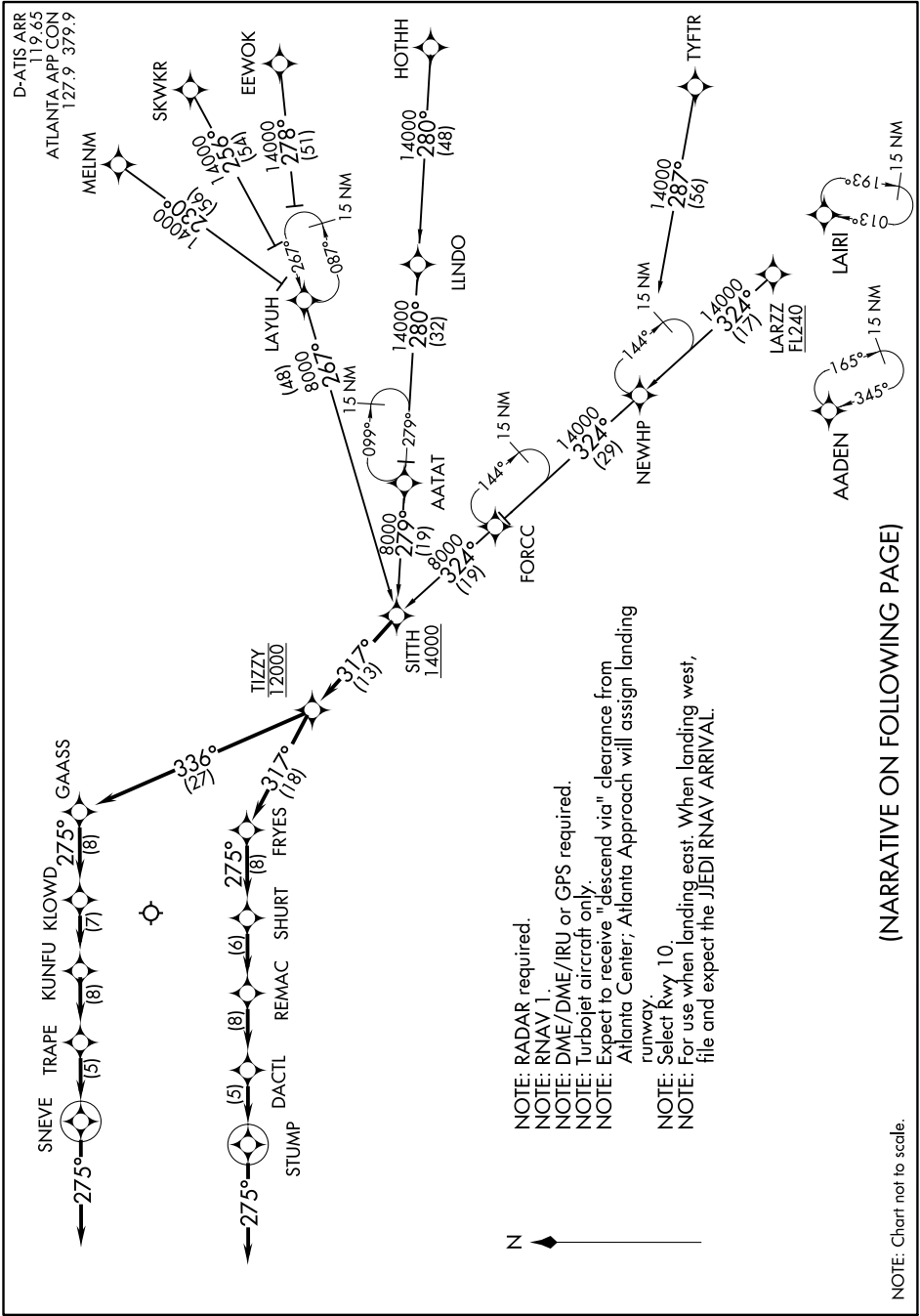
(SITTH.SITTH2) 18032

SITTH TWO ARRIVAL(RNAV)

AL-26 (FAA)

HARTSFIELD-JACKSON ATLANTA INTL (ATL)
ATLANTA, GEORGIA

SE-4, 16 JUN 2022 to 14 JUL 2022



- NOTE: RADAR required.
- NOTE: RNAV 1.
- NOTE: DME/DME/IRU or GPS required.
- NOTE: Turbojet aircraft only.
- NOTE: Expect to receive "descend via" clearance from Atlanta Center; Atlanta Approach will assign landing runway.
- NOTE: Select Rwy 10.
- NOTE: For use when landing east. When landing west, file and expect the JEDI RNAV ARRIVAL.

(NARRATIVE ON FOLLOWING PAGE)

NOTE: Chart not to scale.

SE-4, 16 JUN 2022 to 14 JUL 2022

SITTH TWO ARRIVAL(RNAV)
(SITTH.SITTH2) 01FEB18

HARTSFIELD-JACKSON ATLANTA INTL (ATL)
ATLANTA, GEORGIA